

Windows App : Images To PDF Maker

1938



TO THE FIFTH GENERATION OF CUSTOMERS

SETH THOMAS

PRESENTS

1938 CLOCKS



PRESENTING

1 9 3 8

SETH THOMAS CLOCKS

The presentation of 1938 Seth Thomas Clocks has particular significance because it marks the passing of the 125th milestone of progress.

It is a far cry back to the first Seth Thomas Clocks manufactured in 1813. Then, because of the scarcity of proper metals, cabinets and movements alike were fashioned largely from wood. Many of these fine old clocks are still in daily use and serve as living evidence that the ambition of their famous founder has been completely fulfilled.

Seth Thomas Clocks of today reflect all the traditions of the clockmaker's art and are regarded as "America's finest". In styles there are many patterns shown in this book that are the creations of the country's foremost designers. The fidelity in timekeeping of Seth Thomas Clocks reflects the century and a quarter of experience which is their heritage.

The excellence of electric clocks by Seth Thomas is now definitely recognized. These too, are precision built by experts in the clockmaker's craft and the sturdy slow speed self-starting motors employed insure longer service and freedom from objectionable noises.

1938 Seth Thomas Clocks are recommended to those who must *always* be on time and consider clock values in terms of dependable performance...years of service...and personal enjoyment.

Catalog No. 800A issued February 1938.

SETH THOMAS CLOCKS - THOMASTON, CONN.

A DIVISION OF GENERAL TIME INSTRUMENTS CORP'N



CORONA \$6.95

With 8-day lever time movement No. 5100

A bright, cheery timepiece that anyone would be glad to possess or proud to present as a gift. The entire front is mirror glass in deep blue and has beveled edges. Four-inch exposed dial-ring in polished goldplate has die cut numerals that appear in silhouette against the lustrous blue glass as a background. Dial center in silverplate and goldplated hands are protected by convex glass. Height 4 $\frac{3}{4}$ -inches. Width 5 $\frac{3}{4}$ -inches. Thickness 2 $\frac{1}{8}$ -inches. Packed singly. Shipping weight 3 pounds.



No. 1 BEVERLY \$6.95

Light natural mahogany

No. 2 BEVERLY \$6.95

Rich brown mahogany

Both above have self-starting electric time movements

No. 1 BELMONT \$6.95

Same as No. 1 Beverly except has 8-day lever time movement No. 5100

No. 2 BELMONT \$6.95

Same as No. 2 Beverly except has 8-day lever time movement No. 5100

An unusual value. Oval-shaped case is solid mahogany, finished in a rich shade. Metal base and sash are polished brass. 3 $\frac{3}{4}$ -inch light ivory dial has numerals in black. Height 4 $\frac{3}{4}$ -inches. Width 5 $\frac{1}{2}$ -inches. Thickness 2-inches. Packed singly. Shipping weight 3 pounds.



DUPLEX \$6.95

With 8-day lever time movement No. 5100

Performs two important functions on the desk at home or office. Has a convenient holder on the front for the elusive pen or pencil. Walnut case. Exposed 2 $\frac{1}{8}$ -inch dial-ring is in mat finished goldplate with numerals etched in black. Recessed dial center, also in black, and goldplated hands are protected by convex glass. Height 4 $\frac{1}{4}$ -inches. Width 3 $\frac{1}{2}$ -inches. Thickness 2 $\frac{3}{8}$ -inches. Packed singly. Shipping weight 2 pounds.



No. 1E WOODMONT \$8.95

With self-starting electric time movement

No. 1W WOODMONT \$8.95

Same with 8-day lever time movement No. 5100

A clock of character for both modern and conventional rooms. Has solid mahogany case in medium light shade and veneered front with grainings diagonally matched in the center. Handle and sash are gold colored and fully polished. Has 3 $\frac{3}{8}$ -inch silverplated dial with black minute circle and numerals on background of harmonizing tint. Hands are also in black. Height, (with handle upright) 6 $\frac{1}{2}$ -inches. Width, 5 $\frac{3}{8}$ -inches. Thickness, 2 $\frac{3}{8}$ -inches. Packed singly. Shipping weight, 4 pounds.

TABLE CLOCKS



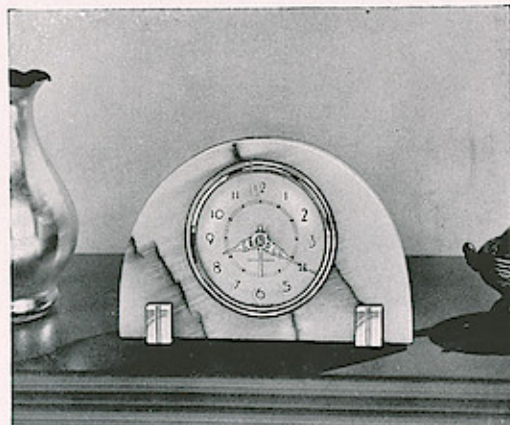
No. 2 GIBSON \$10.00

With self-starting electric time movement

No. 2 DELROD \$10.00

Same with 8-day lever time movement No. 5100

Because of its adaptable size and harmonizing qualities in many decorative settings, this clock is frequently selected for presentation purposes. Solid mahogany case has front panels recessed and raised rosette in center. 3 1/4-inch silverplated dial with numerals in black. Has brushed goldplated sash and silverplated mat. Height 6 1/4-inches. Width 5 3/8-inches. Thickness 2 3/4-inches. Packed singly. Shipping weight 4 pounds.



VISTA \$12.50

With self-starting electric time movement

A bright, cheerful clock of unusual character and enduring beauty. Case is light translucent onyx enriched by variegated grainings in delicate tints. The 3 1/8-inch dial is in light ivory with black minute circle. Further distinctiveness is introduced by the numerals which are permanently applied to the reverse of the convex protection glass. Fluted feet, also hands and sash, are gold colored and fully polished. Height 4 3/4-inches. Width, 7 1/8-inches. Thickness, 2 3/8-inches. Packed singly. Shipping weight, 5 pounds.



No. 1E TABOR \$7.95

With self-starting electric time movement

No. 1W TABOR \$7.95

Same with 8-day lever time movement No. 5100

Presents a very smart appearance. The cylindrical case with lustrous black lacquer finish is encircled by three round metal overlays in brushed goldplate. Die cast base is also richly finished in brushed goldplate. 3 1/4-inch silverplated dial has black numerals on background of harmonizing tint. Height 4 1/8-inches. Width 4 3/8-inches. Thickness 2 1/2-inches. Packed singly. Shipping weight 4 pounds.



TALSON \$9.75

With self-starting electric time movement

DELART \$9.75

Same with 8-day lever time movement No. 5100

Right in size for cabinet, table or desk. Solid mahogany case. 3 1/4-inch dial enameled in light ivory with numerals and hands in dark brown. Brushed goldplated sash. Height 5 1/2-inches. Width 14-inches. Thickness 2 3/4-inches. Packed singly. Shipping weight 4 pounds.

DESK, BOUDOIR and



No. 1E CREST **\$9.95**
With self-starting electric time movement

No. 1W CREST **\$9.95**
Same with 8-day lever time movement No. 5100

A clock of unusual distinctiveness and beauty. Beveled recess in front of solid mahogany case frames the 4-inch exposed dial-ring in polished goldplate. Numerals are die cut and appear in silhouette against mahogany as a background. Dial center and mat in silver also polished goldplated hands, are protected by glass. Height 5 $\frac{3}{8}$ -inches. Width 5-inches. Thickness 2 $\frac{1}{4}$ -inches. Packed singly. Shipping weight 4 pounds.



ANITA **\$4.95**
With 8-day lever time movement No. 5100

Note the novel design of the 2 $\frac{1}{4}$ -inch silvered metal dial. It combines the legibility of Arabic numerals 3-6-9-12 with the up-to-dateness of modern hour markers at intervening points. All are in black and appear against a background of harmonizing tint. The 12-sided case is solid walnut with metal feet in brushed goldplate. Height 4-inches. Width 3 $\frac{3}{8}$ -inches. Thickness 1 $\frac{5}{8}$ -inches. Packed singly. Shipping weight 2 pounds.

No. 1 VERNA **\$4.95**

Walnut

No. 2 VERNA **\$4.95**

Mahogany

Both above have 8-day lever time movements No. 5100

Solid wood case with vertical flutings on front and top. Metal feet are in brushed goldplate and brass sash is finished in gold colored lacquer. 2 $\frac{1}{4}$ -inch etched silver dial with hour indicators in black and center decorative design in polished silver. Height 4 $\frac{1}{4}$ -inches. Width 3 $\frac{5}{8}$ -inches. Thickness 1 $\frac{3}{8}$ -inches. Packed singly. Shipping weight 2 pounds.



No. 1E BANNER **\$5.95**
Gun metal finish with gold colored trim

No. 2E BANNER **\$5.95**
Russet brown with gold colored trim
Both above have self-starting electric time movements

No. 1W BANNER **\$5.95**
Same as 1E except has 8-day lever time movement No. 5100

No. 2W BANNER **\$5.95**
Same as 2E except has 8-day lever time movement No. 5100

Rich in appearance—adaptable in size and a BANNER value. Die cast metal case in lacquer finish is enlivened with overlay and sash in polished gold colored brass. 3 $\frac{1}{8}$ -inch silverplated dial with black numerals on background of harmonizing tint. Height 4 $\frac{3}{4}$ -inches. Width 4 $\frac{1}{2}$ -inches. Thickness 1 $\frac{3}{4}$ -inches. Packed singly. Shipping weight 3 pounds.

TABLE CLOCKS



JANET

\$4.95

With 8-day lever time movement No. 5100

Medium light mahogany with walnut center insert in slightly darker shade. $2\frac{1}{4}$ -inch etched silverplated dial with black numerals and distinctive center decoration in polished silver. Metal feet are in brushed goldplate. Brass sash is finished in gold colored lacquer. Height $4\frac{1}{4}$ -inches. Width $3\frac{1}{4}$ -inches. Thickness $1\frac{5}{8}$ -inches. Packed singly. Shipping weight 2 pounds.



RUTLAND

\$9.95

With self-starting electric time movement

This clock reflects the true character and charm of nearly a century ago. Durable whitewood case finished in popular "russet tone" maple with mirror in front panel. $3\frac{1}{4}$ -inch ivory tinted dial—black Roman numerals. Height 8-inches. Width 6-inches. Thickness $2\frac{3}{4}$ -inches. Packed singly. Shipping weight 4 pounds.



No. 1E FLORET

\$8.95

With self-starting electric time movement

No. 1W FLORET

\$8.95

Same with 8-day lever time movement No. 5100

A versatile clock. Fine for cabinet, table, desk or boudoir, and adds character to both conventional and modern settings. Solid mahogany case with gently sloping sides and front border of genuine holly-wood inlay. Polished brass sash and feet. $3\frac{1}{4}$ -inch dial in light ivory lacquer with black numerals on background of harmonizing tint. Height $5\frac{1}{4}$ -inches. Width $5\frac{3}{8}$ -inches. Thickness $2\frac{1}{2}$ -inches. Packed singly. Shipping weight 4 pounds.



No. 2E PRIMROSE

\$9.95

With self-starting electric time movement

No. 2W PRIMROSE

\$9.95

Same with 8-day lever time movement No. 5100

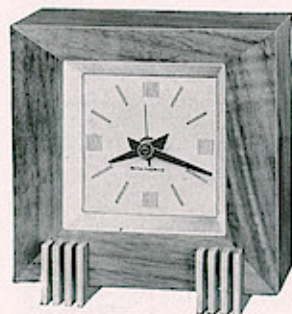
An Early American clock finished in popular "honey-tone" shade of maple on whitewood. Has mirror in lower front panel. Square Roman dial in ivory with flowered corner decorations. Diameter of minute circle $3\frac{3}{8}$ -inches. Height $8\frac{1}{4}$ -inches. Width $6\frac{1}{4}$ -inches. Thickness $2\frac{3}{4}$ -inches. Packed singly. Shipping weight 4 pounds.



SUNSET \$15.00

With self-starting electric time movement

The careful blending of metals has been employed to give this clock a bright, modern character. The exposed dial is copperplated and polished. Base, raised hour markers and hands of novel design are polished brass. Diameter of dial to outside of hour indicators is 4-inches. Height 5 $\frac{1}{4}$ -inches. Width 5-inches. Thickness 3 $\frac{1}{2}$ -inches. Packed singly. Shipping weight 5 pounds.



DICKSON \$7.95

With self-starting electric time movement
(See finish specifications below)

No. 2 Black and Silver; No. 3 Ivory and Gun Metal

DELPARK \$7.95

Same with 8-day lever time movement No. 5100
(See finish specifications below)

No. 2 Black and Silver; No. 3 Ivory and Gun Metal; No. 4 Walnut and Gold, but with Arabic numeral dial

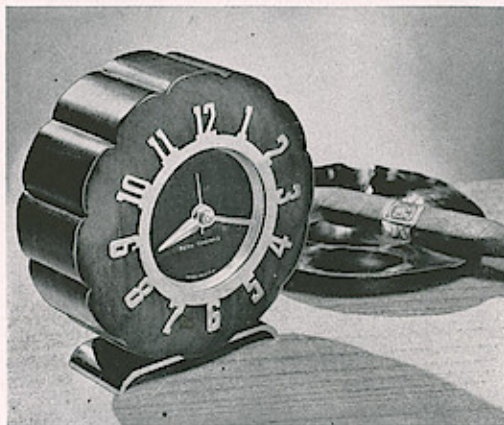
Available in three striking color combinations; No. 2, satin black case with silverplated feet; No. 3, light ivory with feet in contrasting gun metal; No. 4, walnut case with metal feet in brushed goldplate and Arabic numeral dial. All have deep beveled mats in silver and 2 $\frac{1}{4}$ -inch square silvered dials. Height 4 $\frac{3}{4}$ -inches. Width 4 $\frac{1}{2}$ -inches. Thickness 2 $\frac{1}{2}$ -inches. Packed singly. Shipping weight 3 pounds.



VOGUE \$5.95

With 8-day lever time movement No. 5100

The eccentric position of the dial in relation to the contour of the walnut case adds individuality and smartness. Exposed 2 $\frac{7}{8}$ -inch dial ring is in mat finished goldplate with numerals etched in black. Recessed dial center, also in black, and goldplated hands are protected by convex glass. Height 3 $\frac{5}{8}$ -inches. Width 4-inches. Thickness 1 $\frac{1}{2}$ -inches. Packed singly. Shipping weight 2 pounds.



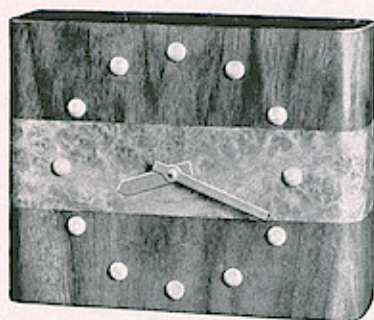
LINNET \$9.95

With self-starting electric time movement

SHAMROCK \$9.95

Same with 8-day lever time movement No. 5100

The contour of the case conforms to the position of the exposed numerals in polished goldplate to add balance and distinctiveness. The numerals are die cut and appear in silhouette against the richly finished genuine walnut case as a background. Clock has recessed dial center in black, polished goldplated hands and silvered metal mat; all protected by glass. Polished goldplated base. Diameter of dial to outside of numerals 4-inches. Height 5 $\frac{1}{8}$ -inches. Width 5-inches. Thickness 2-inches. Packed singly. Shipping weight 3 pounds.



DELRAY

\$5.95

With 8-day lever time movement No. 5100

Walnut case with contrasting band of burl walnut extending across the front and sides. Hour markers of modern character are silver-plated. Diameter of dial to outside of hour indicators $3\frac{5}{8}$ -inches. Height 4-inches. Width $5\frac{1}{4}$ -inches. Thickness $1\frac{3}{4}$ -inches. Packed singly. Shipping weight 2 pounds.



DISCUS

\$9.95

With 8-day lever time movement No. 5100

Rare metals skillfully combined with selected wood give the "Discus" unusual charm and individuality. The exposed metal numerals in polished goldplate are die cut and appear in silhouette against the genuine walnut case as a background. Hands in polished goldplate, also mat and recessed dial center in brushed silverplate, are protected by glass. Easel and metal back are gold-plated and polished. Diameter of dial to outside of numerals 4-inches. Diameter $5\frac{1}{2}$ -inches. Thickness with easel extended $2\frac{3}{4}$ -inches. Packed singly. Shipping weight 3 pounds.

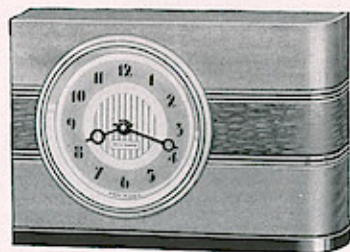


MATIN

\$9.75

With 8-day lever time movement No. 5100

A very distinctive clock in durable Ivory Catalin. Metal base, half circle support, hands of novel design and stars to mark the hours are goldplated and brushed. Diameter of dial to outside of hour indicators 4-inches. Height $5\frac{1}{2}$ -inches. Width $4\frac{3}{4}$ -inches. Thickness $2\frac{3}{4}$ -inches. Packed singly. Shipping weight 3 pounds.



MYRNA

\$4.95

With 8-day lever time movement No. 5100

A clock of unusual individuality. Top and bottom are whitewood finished in "russet tone" maple and the center insert is genuine walnut in a darker contrasting shade. The base is black. $2\frac{1}{4}$ -inch etched silver-plated dial. Height $3\frac{1}{2}$ -inches. Width $5\frac{3}{8}$ -inches. Thickness $1\frac{1}{2}$ -inches. Packed singly. Shipping weight 2 pounds.

DURA

\$5.95

With 8-day lever time movement No. 5100

A Doric design in mahogany with front of quilted maple veneer finished in harmonizing shade. Base is in brushed gold-plate. Brass sash is finished in gold colored lacquer. $2\frac{1}{4}$ -inch etched silver-plated dial with shading around numerals and decorative design in center. Height 5-inches. Width $4\frac{1}{4}$ -inches. Thickness $1\frac{5}{8}$ -inches. Packed singly. Shipping weight 2 pounds.





No. 5E CONSOLE \$22.50
With self-starting electric movement. Strikes hours and half hours

No. 5W CONSOLE \$19.95
Same with 8-day pendulum strike movement No. 120

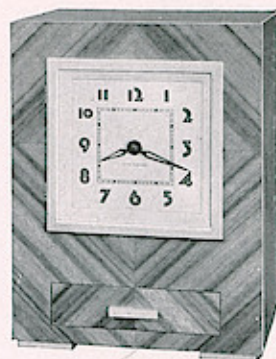
Right in size for both mantel and cabinet use; right in style for modern as well as conventional rooms. Case is selected walnut veneer with diagonally matched walnut veneers above and below the dial. Note the five raised horizontal metal bands in brushed goldplate which follow around the semi-circular ends of the clock. Square 4½-inch cream enameled dial with rich brown figures on white numeral track. Hands of distinctive design are brown to match numerals. Height 7¼-inches. Width 10-inches. Thickness 4⅝-inches. Packed singly. Shipping weight 9 pounds.



No. 4E CONSOLE \$22.50
With self-starting electric movement. Strikes hours and half hours

No. 4W CONSOLE \$19.95
Same with 8-day pendulum strike movement No. 120

Front, sides and top are diagonally matched Oriental veneer richly finished in walnut. Sash and metal feet are in brushed goldplate. Silvered dial—4⅜-inches long by 3⅜-inches high—has numerals etched in black and outlined in gold color. Height 6¼-inches. Width 9¼-inches. Thickness 4½-inches. Packed singly. Shipping weight 8 pounds.



No. 4E CENTURY \$22.50
With self-starting electric movement. Strikes hours and half hours

No. 4W CENTURY \$19.95
Same with 8-day pendulum strike movement No. 120

Walnut case with front and sides in diagonally matched Oriental veneer, finished in walnut. Has handy drawer that pulls out just below the dial. Mat and 3⅜-inch square dial are silvered. Metal decorations are in brushed goldplate. Height 8¾-inches. Width 6½-inches. Thickness 4½-inches. Packed singly. Shipping weight 8 pounds.



For mantel, cabinet or wall use

No. 1E CHEVRON \$12.45
With self-starting electric time movement

No. 1W CHEVRON \$12.45
Same with 8-day lever time movement No. 5100

The vertical metal inlays in silverplate set up a rich contrast with the solid walnut case. 5⅜-inch silvered metal dial ring has black numerals and is exposed. Hands also in silver are protected by convex glass. Height 8½-inches. Width 7⅞-inches. Thickness 2¾-inches. Packed singly. Shipping weight 6 pounds.



For wall use

SONANT \$20.00

With 8-day pendulum movement No. 120
Strikes hours and half hours

Walnut case with imported Tamo wood veneer front and attractive top and bottom moldings. 4 1/8-inch convex white enameled dial with Roman numerals in black and small figures at five minute marks in red. Height 10-inches. Width 6 3/4-inches. Thickness 4 1/2-inches. Packed singly. Shipping weight 8 pounds.



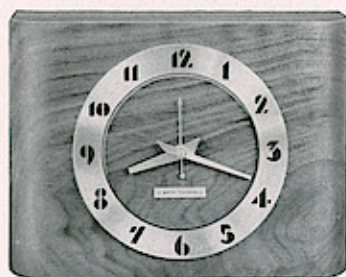
REX \$24.95

With self-starting electric movement
Strikes hours and half hours

ZEPHYR \$22.50

Same with 8-day pendulum strike movement No. 120

Retains the adaptability of the tambour but presents a decidedly up-to-date appearance. American walnut case with beveled sash and metal foot moldings at each end of case in brushed goldplate. 4 1/8-inch silverplated dial with tinted outer ring to harmonize with black hour markers. Height 6 5/8-inches. Width 16 3/4-inches. Thickness 5-inches. Packed singly. Shipping weight 8 pounds.



For mantel, cabinet or wall use

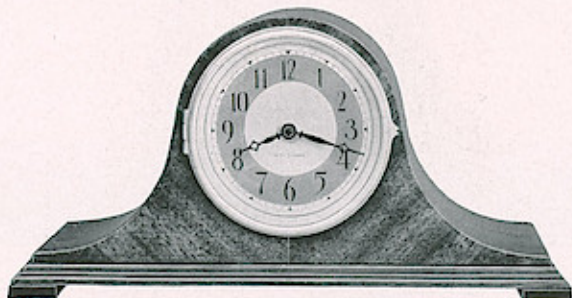
RODSON \$10.95

With self-starting electric time movement

DELOS \$10.95

Same with 8-day lever time movement No. 5100

Can be used as a mantel, cabinet or hanging wall clock. Ideally suited for narrow mantel. Solid walnut case. Black numerals of the 5 3/8-inch silvered metal dial are exposed, while silvered hands are protected by convex glass. Height 6 5/8-inches. Width 9-inches. Thickness 2 3/4-inches. Packed singly. Shipping weight 6 pounds.



LIPTON \$22.50

With self-starting electric movement
Strikes hours and half hours

No. 31 TAMBOUR \$19.95

Same with 8-day pendulum strike movement No. 120

A tambour clock of moderate size, ideal for either cabinet or mantel. Mahogany case with veneered front diagonally matched in the center. 4 1/8-inch silverplated dial with black numerals on tinted background. Sash is in brushed goldplate. Height 6 5/8-inches. Width 13 5/8-inches. Thickness 4 3/4-inches. Packed singly. Shipping weight 8 pounds.



BENNINGTON \$37.50

With self-starting electric movement. Strikes hours and half hours

KINGSBURY \$35.00

Same with 8-day pendulum strike movement No. 89

A fine Colonial clock with unusual charm and decorative value. Solid red mahogany case. Mount Vernon panel in full color. Brushed brass top ornaments. Antique Roman dial with black and gold decorations. Diameter of dial to outside of numerals $4\frac{7}{8}$ -inches. Height $16\frac{7}{8}$ -inches. Width 10-inches. Thickness $4\frac{3}{4}$ -inches. Packed singly. Shipping weight 12 pounds.



No. 1 MIDDLETON \$25.00

Red mahogany finish

No. 2 MIDDLETON \$25.00

Genuine maple

Both above have self-starting electric movements.
Strike hours and half hours

No. 1 SHARON \$22.50

Red mahogany finish

No. 2 SHARON \$22.50

Genuine maple

Both above have 8-day pendulum strike movements No. 89

Copied from a famous original which was very popular in the early 19th Century. Nos. 1 Middleton and Sharon have red mahogany finish on whitewood; Nos. 2 have genuine maple cabinets finished in mellow "russet-tone" shade. Both have Colonial decorative designs in lower panels, flowered antique type dials with Roman numerals and 5-inch minute circles. Height $14\frac{3}{8}$ -inches. Width $9\frac{1}{8}$ -inches. Thickness $4\frac{3}{4}$ -inches. Packed singly. Shipping weight 12 pounds.



No. 18 SENTINEL \$16.50

With 8-day pendulum movement No. 89
Hour and half hour chord strike on 2 rods

No. 10 CYMBAL \$17.95

Same as No. 18 Sentinel except each quarter hour is announced on three rod gongs. A single note followed by a chord marks the quarter hour; two notes and chords the half hour, and three the three quarter hour. The hour is then announced by chords

Mahogany case with applied front panel of selected bird's-eye maple. $5\frac{3}{8}$ -inch silvered metal dial with fully polished goldplated sash. Height $9\frac{1}{4}$ -inches. Width 20-inches. Thickness 6-inches. Packed singly. Shipping weight 11 pounds.

D DESIGN CLOCKS -

mantel in these settings. The Bennington, electric (Kingsbury 8-day) pictured here was copied from such a famous original. It reflects the craftsmanship of Eli Terry in contour, decorative detail and finish, and is characteristic of fine Colonial architecture. Because of its authenticity this clock and the Middleton electric (Sharon 8-day) are frequently selected by interior decorators for Early American rooms.



THAMES \$30.00

With 8-day pendulum movement No. 120
Strikes hours and half hours

A fine Old English design. Has mahogany case with front and side panels of burl redwood. Goldplated handle. 4 1/8-inch convex white enameled dial with Roman numerals in black and small figures at five minute marks in red. Height (including handle) 9 3/4-inches. Width 6 3/4-inches. Thickness 4 1/2-inches. Packed singly. Shipping weight 7 pounds.



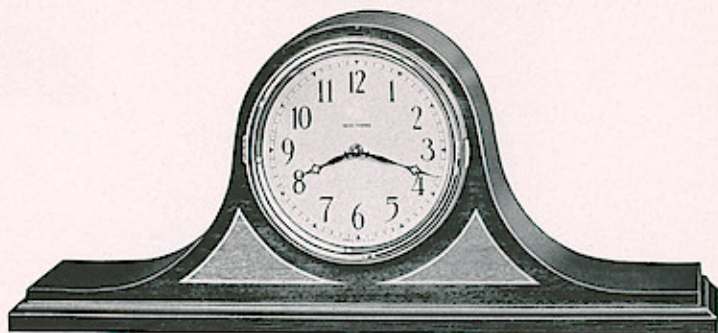
NANKING \$27.50

With self-starting electric movement. Strikes hours and half hours

DUNBAR \$25.00

Same with 8-day pendulum strike movement No. 120

A Chinese chippendale design in walnut with burl panels and metal top finial. 4 1/8-inch silverplated dial with decorative design of top ornament reproduced in harmonizing tint. Height 10-inches. Width 7-inches. Thickness 5-inches. Packed singly. Shipping weight 8 pounds.



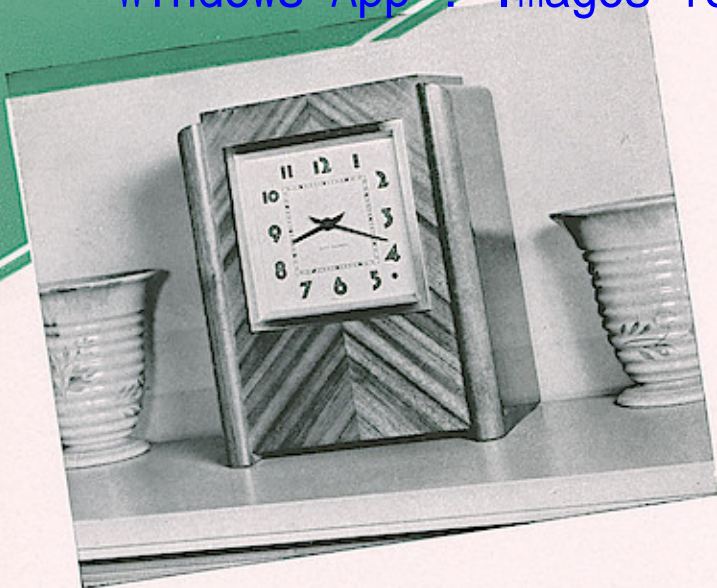
COLTON \$16.50

With self-starting electric movement. Strikes hours and half hours on coiled gong of bell metal

No. 19 SENTINEL \$13.95

Same case fitted with 8-day pendulum movement No. 891
Announces hours and half hours by rich chords

A moderately priced clock that retains all of the graceful characteristics of the tambour design. The cabinet is mahogany veneer and gumwood finished in a rich, dark shade. Front decorations are in light mahogany with borders to simulate holly-wood. 5 3/8-inch enameled dial with hands and numerals in deep brown. Height 8 3/4-inches. Width 20-inches. Thickness 5 1/2-inches. Packed singly. Shipping weight 11 pounds.



Year in-year out, exactly on time, the full rich tones of Seth Thomas Westminster Chimes resound through the homes of America. Beside announcing the time they seem to carry a message of cheer and companionship. They create a "lived in" atmosphere.

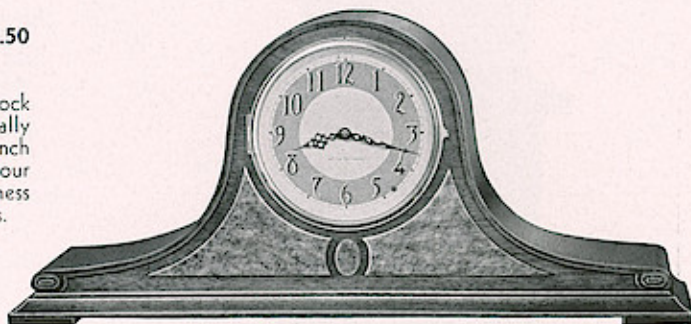
Too, changing modes and fancies cannot detract from the permanent beauty of their rich cabinets.

All Seth Thomas Chime clocks are equipped

FALSBRURY **\$35.00**
With self-starting electric Westminster Chime movement

No. 57 CHIME **\$32.50**
Same with 8-day pendulum chime movement No. 124

The natural beauty of fine woods is emphasized in this clock of modern character. Walnut case with front in diagonally matched Oriental veneer, finished in walnut. 4½-inch square silverplated dial. Goldplated sash. Quarter hour chime. Height 10½-inches. Width 8¾-inches. Thickness 6¼-inches. Packed singly. Shipping weight 12 pounds.



LUDBURY **\$35.00**
With self-starting electric Westminster Chime movement

No. 60 CHIME **\$32.50**
Same with 8-day pendulum chime movement No. 124

The fine appearance of the rich mahogany cabinet is accentuated by distinctive moldings at the side and raised front panels of mildly contrasting bird's-eye maple. 5½-inch dial is silvered and the raised bronze numerals are applied to background of harmonizing tint. Quarter hour chime. Height 9½-inches. Width 21¼-inches. Thickness 6½-inches. Packed singly. Shipping weight 14 pounds.



DALESBRURY **\$30.00**
With self-starting electric Westminster Chime movement

No. 116 CHIME **\$27.50**
Same with 8-day pendulum chime movement No. 124

Mahogany case with scalloped base. Has raised front panel of bird's-eye maple finished in a mildly contrasting shade. 5¾-inch silvered metal dial and polished goldplated sash. Quarter hour chime. Height 10½-inches. Width 8¾-inches. Thickness 5¾-inches. Packed singly. Shipping weight 10 pounds.

CHIME CLOCKS

with a conveniently located chime silencing device. With this set in "off" position, the clock strikes the hours only.

The electric chimes are also fitted with an improved type of governor. The fan has been replaced with a disc revolving between two permanent magnets of carefully measured strength. The speed of the chime and strike may be easily adjusted by the dealer to satisfy any individual taste.



WESTBURY \$47.50
With self-starting electric Westminster Chime movement

CHIME 53 \$45.00
Same with 8-day pendulum chime movement No. 124

Mahogany with genuine marquetry inlay in front panel. 5 1/8-inch silverplated dial having applied raised bronze numerals. Goldplated sash. Quarter hour chime. Height 10 3/4-inches. Width 8 3/8-inches. Thickness 5 3/4-inches. Packed singly. Shipping weight 10 pounds.



ROXBURY \$40.00
With self-starting electric Westminster Chime movement

CHIME 52 \$37.50
Same with 8-day pendulum chime movement No. 124

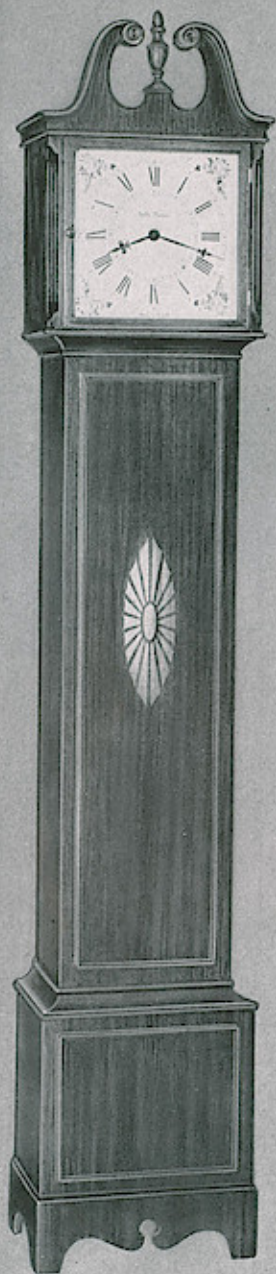
American walnut with burl panel on front. 5 1/8-inch silverplated dial having applied raised bronze numerals. Quarter hour chime. Height 9 1/2-inches. Width 20 3/8-inches. Thickness 6 1/8-inches. Packed singly. Shipping weight 13 pounds.



MEDBURY \$30.00
With self-starting electric Westminster Chime movement

CHIME 56 \$27.50
Same with 8-day pendulum chime movement No. 124

Mahogany case with applied front panel of selected bird's-eye maple. 5 3/8-inch silvered metal dial and polished gold-plated sash. Quarter hour chime. Height 9 1/4-inches. Width 20-inches. Thickness 6-inches. Packed singly. Shipping weight 12 pounds.



No. 4E HALL CLOCK \$85.00

With self-starting electric Westminster Chime movement

No. 4W HALL CLOCK \$85.00

Same with 8-day pendulum chime movement No. 113

Mahogany cabinet with distinctive design on front panel. Ivory enameled dial with 8½-inch minute circle, black Roman numerals and colored flower decorations in the corners. Quarter hour chime. Height 72-inches. Width 13-inches. Thickness 8¾-inches. Packed singly. Shipping weight 100 pounds.

Seth Thomas craftsmen have retained all of the stateliness and dignity of the large Grandfather Clocks but have created these Hall Clocks in a moderate size to harmonize with and add balance to furnishings found

FINE BANJO



MANSFIELD \$19.95

With self-starting electric time movement

DELAWARE \$19.95

Same with 8-day lever time movement No. 5100

Mahogany case with George Washington-Mount Vernon panels in full color. Polished brass ornaments. 3¾-inch silverplated dial with Roman numerals. Height 23-inches. Width 6¾-inches. Thickness 2¾-inches. Packed singly. Shipping weight 7 pounds.

BROOKFIELD \$35.00

With self-starting electric movement. Strikes hours and half hours

A lovely Colonial clock ideal for both Early American and conventional rooms. Mahogany case with George Washington-Mount Vernon panels in full color. Top and side ornaments in polished brass. 5½-inch silverplated dial. Height 28¾-inches. Width 9¾-inches. Thickness 3¾-inches. Packed singly. Shipping weight 14 pounds.



ESTMINSTER CHIMES

in the finer American home of today. All are equipped with highest grade movements and announce the passing of each quarter hour with the rich, lingering notes of the old, familiar Westminster Chimes.

CLOCKS

DUFFIELD \$40.00

With self-starting electric time movement

BOSTON \$50.00

Same with 8-day, seven jeweled, lever time movement

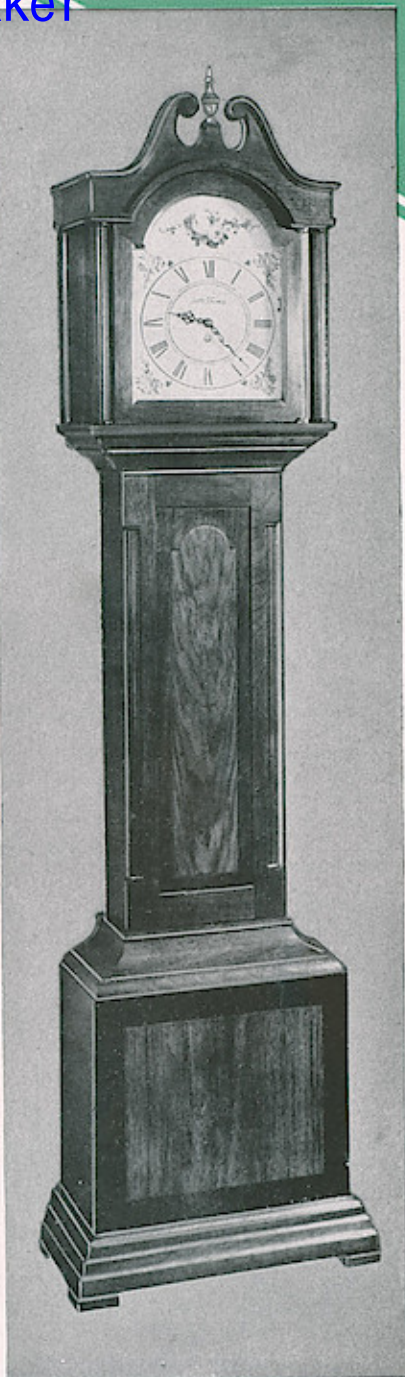
The design of this fine banjo clock reflects the craftsmanship of Simon Willard. The case is mahogany and has Boston Tea Party panels in full color. 5 1/8-inch silverplated dial with Roman numerals in black. Height 30 1/2-inches. Width 8 7/8-inches. Thickness 4-inches. Packed singly. Shipping weight 14 pounds.



CRANDALL \$27.50

With 8-day pendulum movement No. 120
Strikes hours and half hours

Reflects the warmth, character and charm invariably associated with Early American architecture. Mahogany case with George Washington-Mount Vernon panels in full color. Polished brass ornaments. 5 1/8-inch silverplated dial. Height 28 3/4-inches. Width 9 3/4-inches. Thickness 3 3/4-inches. Packed singly. Shipping weight 14 pounds.



HALL CLOCK No. 3E \$125.00

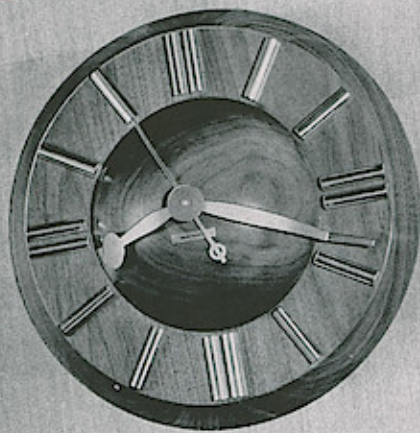
With self-starting electric Westminster Chime movement

HALL CLOCK No. 3W \$125.00

Same with 8-day pendulum chime movement No. 113 and etched silverplated dial

Mahogany with walnut front panels. No. 3E has flowered antique type dial in ivory tint with 8-inch minute circle and Roman numerals. No. 3W has silvered metal dial etched in black with Arabic numerals on raised circular section. Quarter hour chime. Height 73-inches. Width 17 3/4-inches. Thickness 9 3/8-inches. Packed singly. Shipping weight 100 pounds.

KITCHEN, MARINE and WALL CLOCKS



PLAZA **\$30.00**
With self-starting electric time movement

This distinctive wall clock exemplifies the best in modern design. The solid walnut case has beveled edge and the center curves gracefully outward in a perfect sphere. Surrounding the raised center is a flat area upon which semi-circular raised metal hour markers in rich, brushed goldplate are superimposed to produce a rare blending of color. The hands also in brushed goldplate conform to the contour of the case and add novelty and smartness to its appearance. Diameter to outside of minute markers 11½-inches. Overall diameter 13½-inches. Thickness from top of center 3¾-inches. Thickness of base 13/16-inch. Packed singly. Shipping weight 15 pounds.



- No. 1 RECORDER** **\$5.95**
Ivory case with green base
- No. 2 RECORDER** **\$5.95**
White case with black base
- Both above have self-starting electric time movements
- PRECISE** **\$5.95**
(Ivory or Green)
- Same as Recorder without base. Fitted with 8-day lever time movement No. 5100

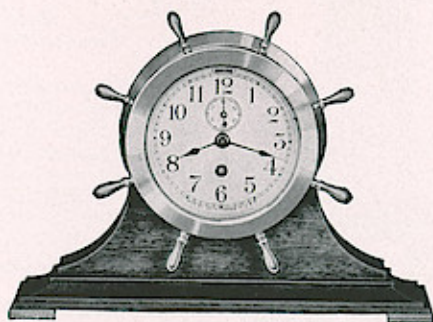
Durable wood case. 5¾-inch white enameled dial, convex glass and polished nickel sash. Recorder—Diameter 8½-inches. Thickness 2¾-inches. Shipping weight 5 pounds. Precise—Diameter 7¾-inches. Thickness 2¼-inches. Shipping weight 4 pounds. Packed singly.



For mantel or wall

- No. 1 PRISTEEN** **\$6.95**
Satin black case with nickel sash
- No. 2 PRISTEEN** **\$6.95**
Light ivory case with nickel sash
- Both above have self-starting electric time movements
- No. 1 SAVANT** **\$6.95**
Same as No. 1 Pristeen except has 8-day lever time movement No. 5100
- No. 2 SAVANT** **\$6.95**
Same as No. 2 Pristeen except has 8-day lever time movement No. 5100

The case is whitewood durably finished in lacquer. Sash is die cast and is in fully polished nickel plate. Has 4½-inch white dial with numerals in black. 6-inches square. Thickness 2¾-inches. Packed singly. Shipping weight 4 pounds.



CLIPPER **\$35.00**
With 8-day, 7-jeweled lever time movement

A genuine marine clock in ideal size for cabinet, mantel or desk. Has polished cast brass head with screw type wheel bezel. Mahogany base with polished brass feet. 3¾-inch etched silverplated dial. Height 6⅞-inches. Width 9⅞-inches. Thickness 2¼-inches. Packed singly. Shipping weight 9 pounds.

Windows App : Images To PDF Maker
**SHIP'S BELL and Other
 MARINE CLOCKS**



ARGOS \$17.50

With 8-day lever time movement No. 10

Has sweep seconds hand and the separate inner circle of figures on the dial from 13 to 00 permits direct reading of Greenwich time. Polished nickelplated case. Flanged front and back. 5 1/4-inch silverplated dial. Diameter 7-inches. Packed singly. Shipping weight 7 pounds.



CHART \$55.00

FOR RADIO ROOM USE

8-Day Time With Sweep Seconds Hand

For use in radio rooms and complies with current requirements of Federal Communications Commission in accuracy, design and construction. Polished cast brass case with screw type moisture proof bezel. Back flange is drilled for attaching clock to panel or wall. 5 1/4-inch silvered metal dial with black numerals. Has secondary inner circle of numerals from 13 to 00 inclusive to facilitate reading and logging of Greenwich mean time. Fan shaped segments appearing in color are actually red and serve as reminder of two, three minute silent periods that must be observed each hour. Broken outer circle appearing in color is also red. The sweep seconds hand passing over this, serves as a guide in sending 4-second alarm signal. Greenwich mean time is indicated by black hour and minute hands. An extra hour hand in dull nickel is provided which can be reset manually to local time without changing position of other hands. Fitted with 8-day 7-jeweled fine lever movement having non-magnetic escapement and compensated balance. Hour hand makes one revolution in 12 hours. Diameter 7 3/4-inches. Thickness, 2 1/16-inches. Packed singly. Shipping weight 10 pounds.



MONITOR \$20.00

With one-day ship's bell strike movement No. 7

Polished brass or nickelplated case. Flanged front and back. Hinged bezel. 5 1/4-inch silverplated dial. Height 10 1/2-inches. Width 7-inches. Packed singly. Shipping weight 7 pounds.



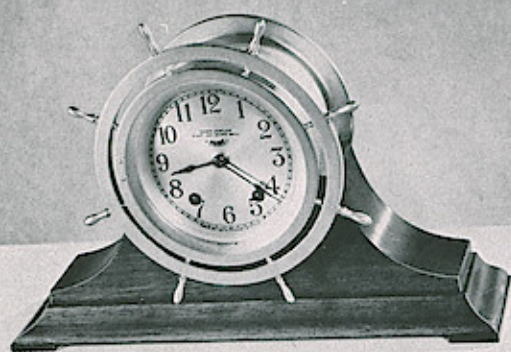
ENGINE LEVER \$16.50

With 8-day lever time movement No. 10

MERRIMAC \$20.00

Same with one-day ship's bell strike movement No. 7

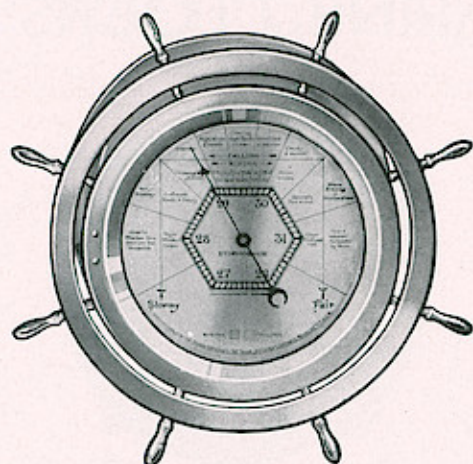
Polished brass or nickelplated case. Flanged front and back. Hinged bezel. 5 1/4-inch silverplated dial. Diameter 7-inches. Packed singly. Shipping weight 7 pounds.



No. 2 MAYFLOWER \$80.00

With 8-day, 7-jeweled ship's bell strike movement No. 115

Genuine ship's bell clock with hinged wheel bezel mounted on base of solid mahogany. Cast brass head—fully polished. 4-inch silvered metal dial with numerals etched in black. Height 8¾-inches. Width 13-inches. Thickness 3¼-inches. Packed singly. Shipping weight 14 pounds.



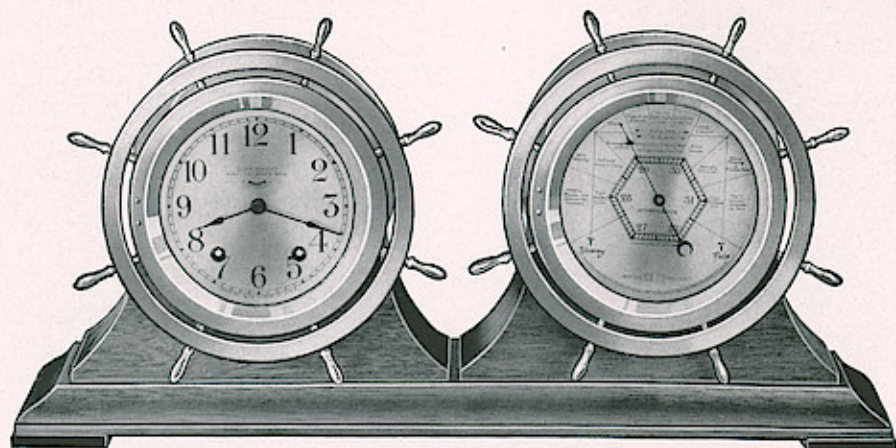
No. 1 HERALD BAROMETER . . . \$42.50

Matches No. 44 Wheel Bezel Clock

No. 2 HERALD BAROMETER . . . \$37.50

Matches No. 44 Plain Bezel Clock

A precision instrument of domestic manufacture that permits scientific forecasting of the weather. Comes with automatic signal on dial which indicates at a glance whether atmospheric pressure is rising or falling. Figures and graduations in center permit direct reading of barometric pressure in inches of mercury. Has silvered metal dial. Polished cast brass case with screw type bezel.



SHIPMATES \$125.00

Ship's Bell Clock-Barometer Combination

The pride of all mariners whether seafaring is a vocation or an avocation. An excellent gift and presentation number. Barometer—same as Herald except has hinged bezel and back flange is not drilled for attaching to wall. Clock—has polished cast brass case with hinged wheel type bezel. 4-inch silvered metal dial etched in black. Fitted with 7-jeweled fine lever movement No. 115 that strikes the ship's bells. Both units are mounted on a single base of hand polished solid mahogany. Height 9-inches. Width 18½-inches. Thickness 3⅜-inches. Packed singly. Shipping weight 22 pounds.

Seth Thomas Ship's Bell clocks announce the hours and half hours to correspond to the marine "watches".

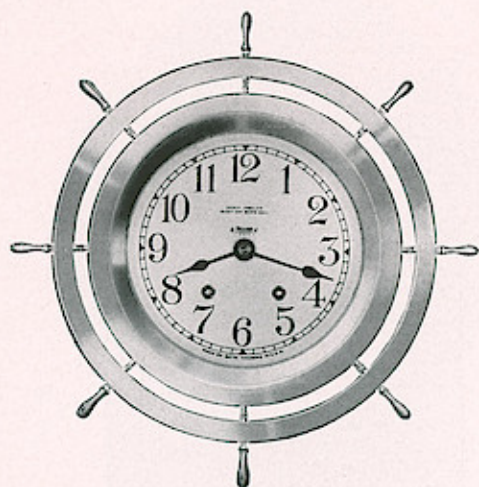
Twelve-thirty is announced by a single stroke of the bell. One o'clock is indicated by two quick strokes; 1.30 by three strokes spaced like this - - -; 2.00 o'clock - - - -; 2.30 - - - -, progressing in this manner until 4.00 o'clock (eight bells), which is the end of the watch. The sequence is then repeated starting at 4.30 and again at 8.30 o'clock.



HELMSMAN \$55.00

With 8-day, 7-jeweled ship's bell strike movement No. 115

Ship's wheel circles and cabinet are mahogany with front of diagonally matched mahogany veneer. Spokes of wheel, hinged sash and metal feet are in polished goldplate. Has 4 1/8-inch silverplated dial. Height 8 1/4-inches. Width 13 1/2-inches. Thickness 4-inches. Packed singly. Shipping weight 10 pounds.



FINE MARINE CLOCKS—Wheel bezel type

Polished cast brass cases with back flanges drilled for screws to attach to wall. Screw type moistureproof bezels. Etched silverplated dials. 7-jeweled fine lever movements. Packed singly.

8-Day Ship's Bell Strike—With Wheel Bezel

	DIAL SIZE	MOVEMENT NO.	DIAMETER	RETAIL	SHIPPING WEIGHT
No. 44 Wheel	4"	115	8 1/4"	\$60.00	12 lbs.
No. 66 Wheel	5 1/2"	115	10 3/8"	\$70.00	15 lbs.



FINE MARINE CLOCKS—Plain bezel type

All have fully polished cast brass cases with back flanges drilled for screws to attach to wall. Screw type moistureproof bezels. Etched silverplated dials. 7-jeweled fine lever movements. Packed singly.

8-Day Ship's Bell Strike—With Plain Bezel

	DIAL SIZE	MOVEMENT NO.	DIAMETER	RETAIL	SHIPPING WEIGHT
No. 44	4"	115	5 3/4"	\$55.00	9 lbs.
No. 66	5 1/2"	115	7 3/4"	65.00	13 lbs.

8-Day Time Only—With Plain Bezel

	DIAL SIZE	MOVEMENT NO.	DIAMETER	RETAIL	SHIPPING WEIGHT
No. 4	4"	117	5 3/4"	\$40.00	8 lbs.
No. 6	5 1/2"	117	7 3/4"	50.00	10 lbs.
*No. 80	8"	117	10 3/8"	75.00	17 lbs.

*Hinged Bezel



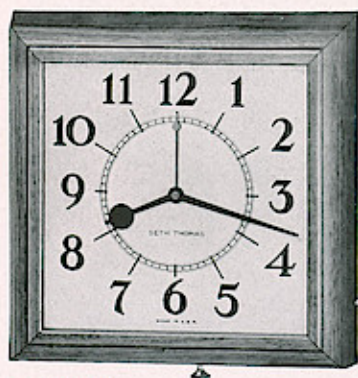
PRESIDENT (Inside Use) \$17.50

Black or dark bronze finish
With self-starting electric time movement

PRESIDENT (Outside Use) \$19.50

Black only. Case is moistureproof and has conduit connector at top with short length No. 18, Type SJ, rubber covered duplex leads for splicing

Note the clean-cut appearance of the clock and the legibility of the dial. The sturdy metal case is durably finished. Has 14-inch dial—seconds hand in red, convex glass and convenient resetting knob. When black clock is specified, numerals of dial and hands are also black. Dark bronze finished clocks have brown numerals and hands to match. Diameter 18 $\frac{1}{4}$ -inches. Packed singly. Shipping weight 15 pounds. (Specify finish in ordering).



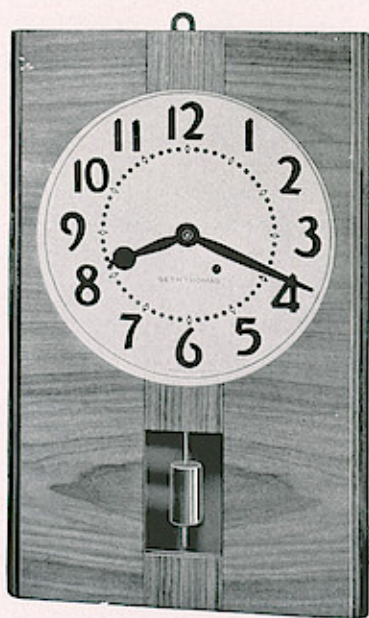
No. 2 COUNCIL \$12.50

With self-starting electric time movement

Up-to-the-minute in appearance as well as in accuracy. Genuine walnut case with sides sloping outward in graceful lines. 7 $\frac{1}{4}$ -inch white dial with brown Arabic numerals of modern character. Dark brown hour and minute hands—red seconds hand. Has reset knob at bottom of case. 9 $\frac{3}{4}$ -inches square. Packed singly. Shipping weight 7 pounds.

Durability—legibility—good looks, all are prime requisites in selecting clocks for business use. The SETH THOMAS clocks shown here and on the following page have these essential characteristics and are invariably the choice of thrifty buyers who consider clock value and economy in terms of length of service and permanent satisfaction.

The Council presents a modern, clean-cut appearance. It is in a rich shade of walnut that blends perfectly with the majority of popular color schemes.



ASSEMBLY \$17.50

With 8-day pendulum time movement No. 41

Light mahogany finished case with veneered front. Note center inlay with grains of wood running vertically. 11-inch white enameled dial with five minute markers in red. Visible pendulum. Height 23-inches. Width 14-inches. Packed singly. Shipping weight 19 pounds.

DOUBLE DIAL and WALL CLOCKS - -



30-DAY DOUBLE DIAL CLOCK \$50.00

Wall Bracket Type
With 30-day double spring pendulum time movement No. 86

ELECTRIC DOUBLE DIAL CLOCK \$50.00

Same except each pair of hands is operated by a separate self-starting electric motor. Both being connected to the same current supply, hands will keep in exact synchronism. Sash over both dials are hinged to facilitate setting

Mahogany or quartered oak. 13-inch dials. Overall measurement with wall bracket 30-inches. Bracket designed to extend clock outward from wall or post. Packed singly. Shipping weight 65 pounds. (Specify finish in ordering).



30-DAY DOUBLE DIAL CLOCK \$55.00

Ceiling Bracket type
With 30-day double spring pendulum time movement No. 86

ELECTRIC DOUBLE DIAL CLOCK \$55.00

Same except each pair of hands is operated by a separate self-starting electric motor. Both being connected to the same current supply, hands will keep in exact synchronism. Sash over both dials are hinged to facilitate setting

Mahogany or quartered oak. 13-inch dials. Clocks can be supplied with bracket inverted for mounting on partitions. Specify type and finish in ordering. Ceiling bracket length overall 38-inches. Packed singly. Shipping weight 85 pounds.



HUDSON \$30.00

With 30-day double spring pendulum movement No. 86

Mahogany or quartered oak. 13-inch dial with legible black numerals and seconds hand as illustrated. 18 3/4-inches square. Packed singly. Shipping weight 26 pounds. (Specify finish in ordering).

Windows App - Images To PDF Maker
**WEIGHT REGULATOR
 CLOCKS - - - - -**

Gravity—an always constant force—provides a logical source of power for these fine weight regulator clocks. Careful selection of materials—expert workmanship by Seth Thomas craftsmen—precision manufacture—sturdy construction; all contribute to the translation of this unvarying force into extremely accurate time.

Regulator No. 70 is used by many great railroad systems, by jewelers and by watch and clock factories as a comparison clock.



REGULATOR No. 2 \$50.00

With 8-day weight time movement No. 77A
 (80 beats per minute)

A precision clock at a moderate price. Choice of mahogany or quartered oak veneered case. Legible 11-inch white enameled dial with seconds hand as illustrated. Movement has reserve power to bridge interruption while winding. Height 36½-inches. Width 15⅝-inches. Packed singly. Shipping weight 48 pounds. (Specify finish in ordering).



REGULATOR No. 70 \$150.00

With 8-day weight time movement No. 68 (60 beats per minute)

REGULATOR No. 70 \$250.00

Mercurial Pendulum

Same except has two glass jar type mercurial pendulum and polished steel pendulum rod

Veneered mahogany or quartered oak case. Features of movement include; reserve power, beat adjuster, jeweled pallets, polished cut steel pinions, polished keystone shaped plates, and it is mounted on a heavy cast iron bracket. 13-inch white enameled dial with black numerals. Height 55½-inches. Width 22-inches. Packed singly. Shipping weight 170 pounds (190 pounds for type with mercurial pendulum). (Specify finish in ordering). Can also be supplied with No. 67 movement and sweep seconds hand at \$10.00 extra.

INDEX

CLASSIFIED

	PAGES
Banjo and other Decorative Wall Clocks.....	8, 9, 14, 15, 16
Barometers.....	18
Boudoir Clocks.....	2, 3, 4, 5, 6, 7
Business Clocks.....	16, 20, 21, 22, 23
Cabinet Clocks.....	8, 9, 11
Colonial Clocks.....	5, 10, 14, 15
Desk Clocks.....	2, 3, 4, 5, 6, 7
Double Dial Clocks.....	22
Hall Clocks.....	14, 15

	PAGES
Kitchen Clocks.....	16
Mantel Clocks.....	8, 9, 10, 11, 12, 13
Marine Clocks.....	16, 17, 18, 19
Office Clocks.....	16, 20, 21, 22, 23
School Clocks.....	20, 21, 22
Ship's Bell Clocks.....	17, 18, 19
Thirty-Day Clocks.....	22
Weight Regulator Clocks.....	23
Westminster Chime Clocks.....	12, 13, 14, 15

GENERAL

	PAGE
Anita.....	4
Argos.....	17
Assembly.....	20
Nos. 1 and 2 Banner.....	4
Nos. 1 and 2 Belmont.....	2
Bennington.....	10
Nos. 1 and 2 Beverly.....	2
Boston.....	15
Brookfield.....	14
No. 4 Century.....	8
Chart.....	17
No. 1 Chevron.....	8
Chime 52.....	13
Chime 53.....	13
Chime 56.....	13
No. 57 Chime.....	12
No. 60 Chime.....	12
No. 116 Chime.....	12
Clipper.....	16
Colton.....	11
No. 4 Console.....	8
No. 5 Console.....	8
Corona.....	2
No. 2 Council.....	20
Crandall.....	15
No. 1 Crest.....	4
No. 10 Cymbal.....	10
Dalesbury.....	12
Delart.....	3
Delaware.....	14
Delos.....	9
Nos. 2, 3 and 4 Delpark.....	6
Delray.....	7
No. 2 Delrod.....	3
Nos. 2 and 3 Dickson.....	6
Discus.....	7
Double Dial, Electric.....	22
Double Dial, 30-Day.....	22
10-inch Drop Octagon.....	21
12-inch Drop Octagon.....	21
Duffield.....	15
Dunbar.....	11
Duplex.....	2
Dura.....	7
Engine Lever.....	17
Falsbury.....	12
No. 4 Fine Lever, Plain Bezel.....	19
No. 6 Fine Lever, Plain Bezel.....	19
No. 80 Fine Lever, Plain Bezel.....	19
No. 1 Floret.....	5
No. 2 Gibson.....	3
Hall Clock No. 3.....	15
No. 4 Hall Clock.....	14
Helmman.....	19

	PAGE
Nos. 1 and 2 Herald.....	18
Hudson.....	22
Janet.....	5
Kingsbury.....	10
Linnet.....	6
Lipton.....	9
Ludbury.....	12
Mansfield.....	14
Matin.....	7
No. 2 Mayflower.....	18
Medbury.....	13
Merrimac.....	17
Nos. 1 and 2 Middleton.....	10
Monitor.....	17
Myrna.....	7
Nanking.....	11
Plaza.....	16
Precise.....	16
President.....	20
No. 2 Primrose.....	5
No. 2 Principal.....	21
Nos. 1 and 2 Pristeen.....	16
Nos. 1 and 2 Recorder.....	16
Regulator No. 2.....	23
Regulator No. 70.....	23
Rex.....	9
Rodson.....	9
Roxbury.....	13
Rutland.....	5
Nos. 1 and 2 Savant.....	16
No. 3 Senate.....	21
No. 4 Senate.....	21
No. 19 Sentinel.....	11
No. 18 Sentinel.....	10
Shamrock.....	6
Nos. 1 and 2 Sharon.....	10
Shipmates.....	18
No. 44 Ship's Bell, Plain Bezel.....	19
No. 44 Ship's Bell, Wheel Bezel.....	19
No. 66 Ship's Bell, Plain Bezel.....	19
No. 66 Ship's Bell, Wheel Bezel.....	19
Sonant.....	9
Sunset.....	6
No. 1 Tabor.....	3
Talson.....	3
No. 31 Tambour.....	9
Thames.....	11
Nos. 1 and 2 Verna.....	4
Vista.....	3
Vogue.....	6
Westbury.....	13
No. 1 Woodmont.....	2
Zephyr.....	9

Windows App : Images To PDF Maker