

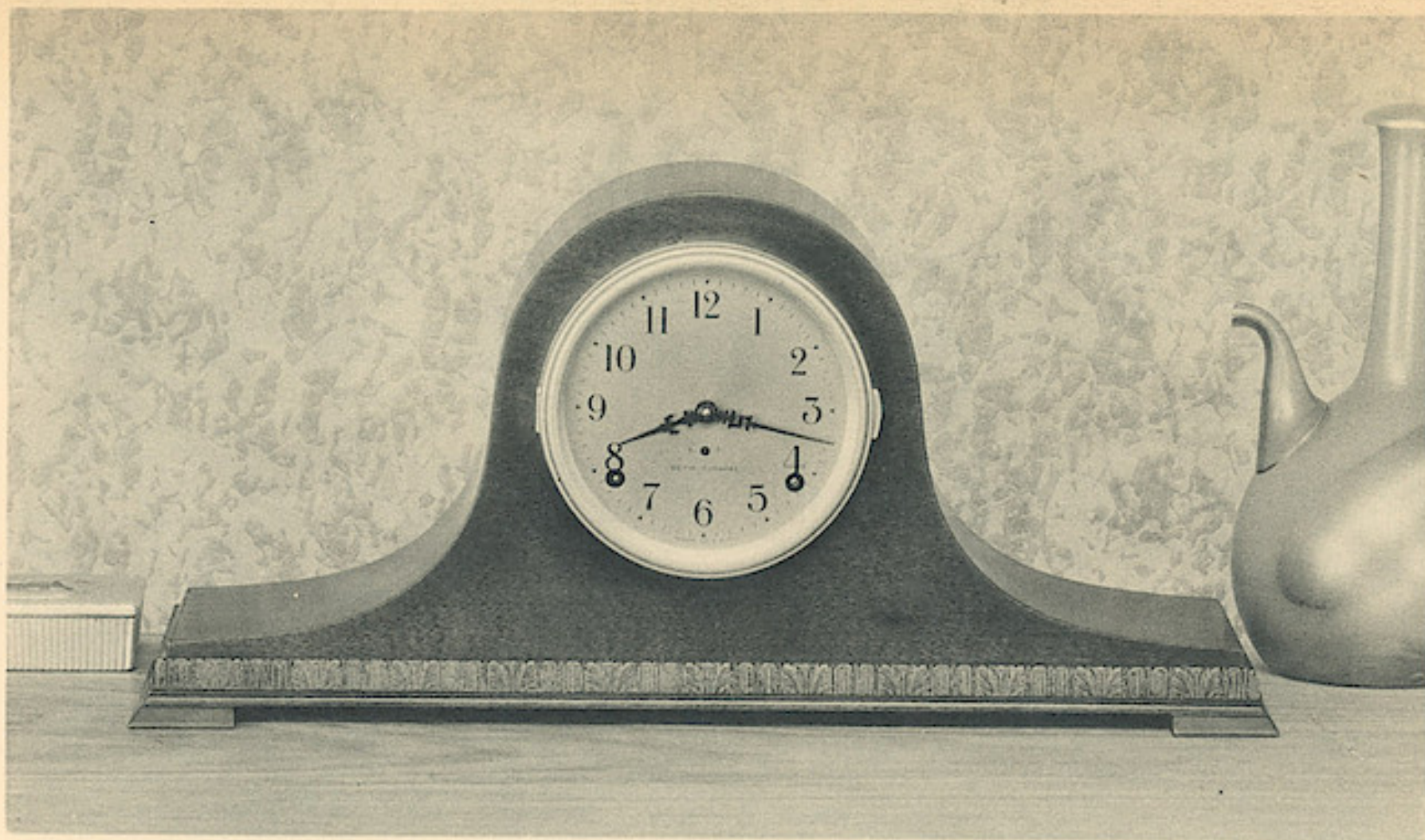
Seth Thomas Electric Clocks

"Built for a lifetime of accurate service"



{ For regulated 50 and 60 cycle alternating
current. Clocks supplied for use on 60
cycles unless otherwise specified. }

SETH THOMAS CLOCKS



SPECIAL 40
(SENTINEL)

A "gilt edge" value. The graceful contour of the genuine mahogany case is accentuated by a distinctive design of Corinthian origin at the base. 5-inch silvered metal dial. Fitted with dependable 8-day pendulum movement No. 89. Strikes hours and half-hours in full resonant tones on rod gong.

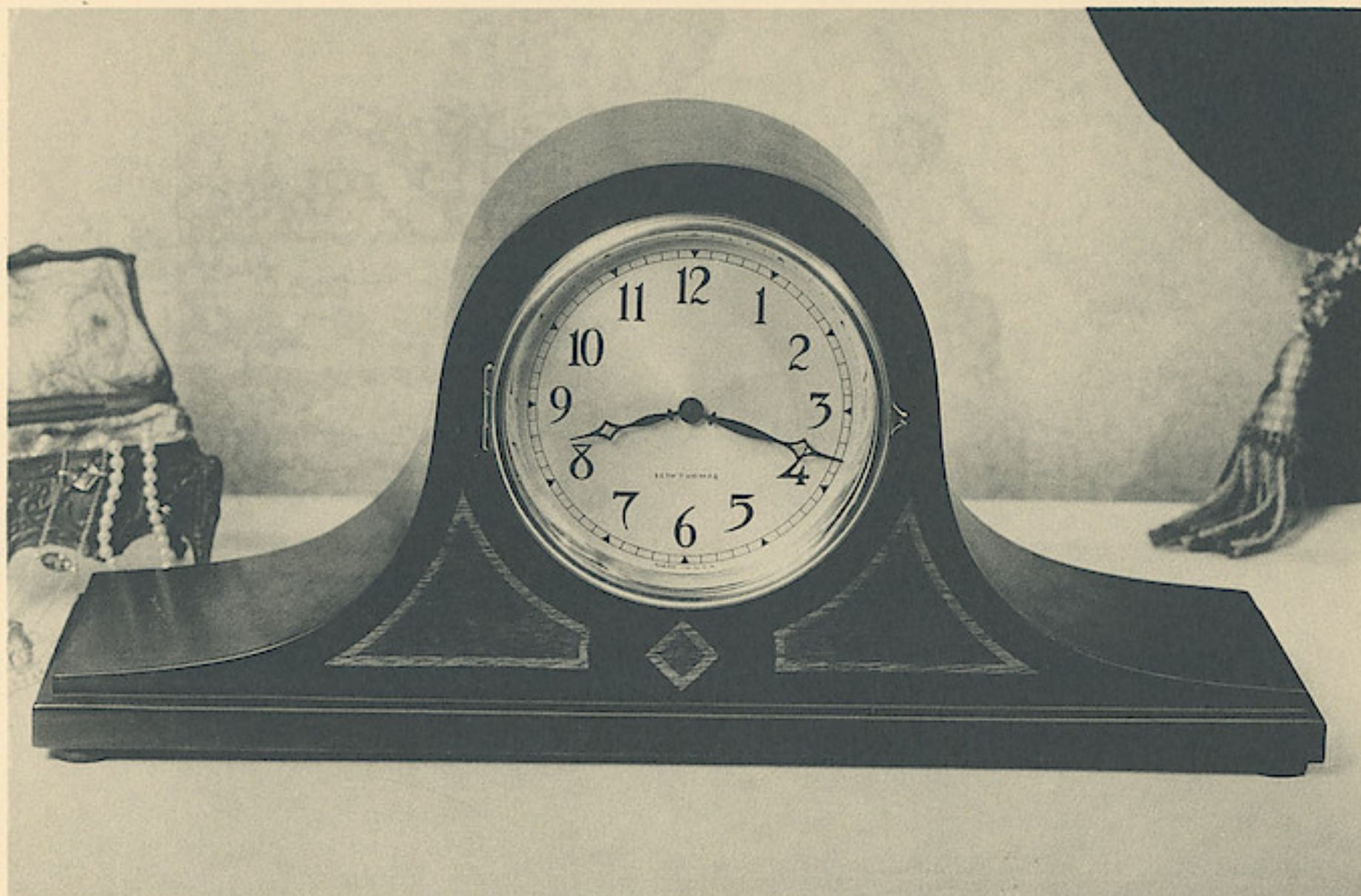
Height $9\frac{3}{8}$ inches.

Width $20\frac{1}{8}$ inches.

SPECIAL 41
(CYMBAL)

Same as above except strikes quarter hours on two-toned gong.

SETH THOMAS CLOCKS



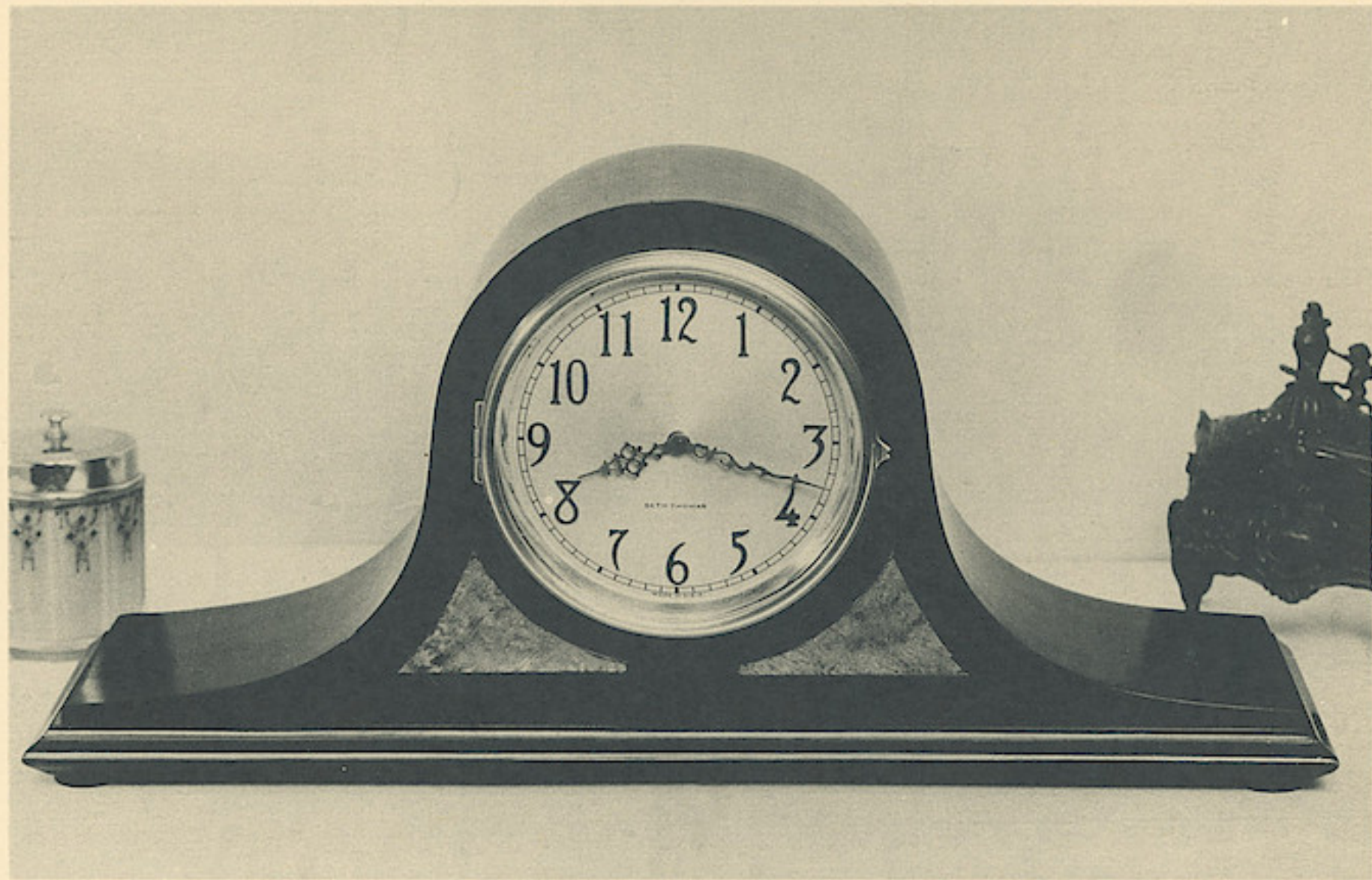
E
L
E
C
T
R
I
C

Synchronous Electric

Cragford . . \$19.75

TWO tone genuine mahogany. 5-inch silvered dial. Self-starting synchronous electric. Strikes hours and half hours. A gong of real bell metal insures full rich tones. Height $9\frac{1}{4}$ inches. Width $19\frac{1}{2}$ inches.

SETH THOMAS CLOCKS



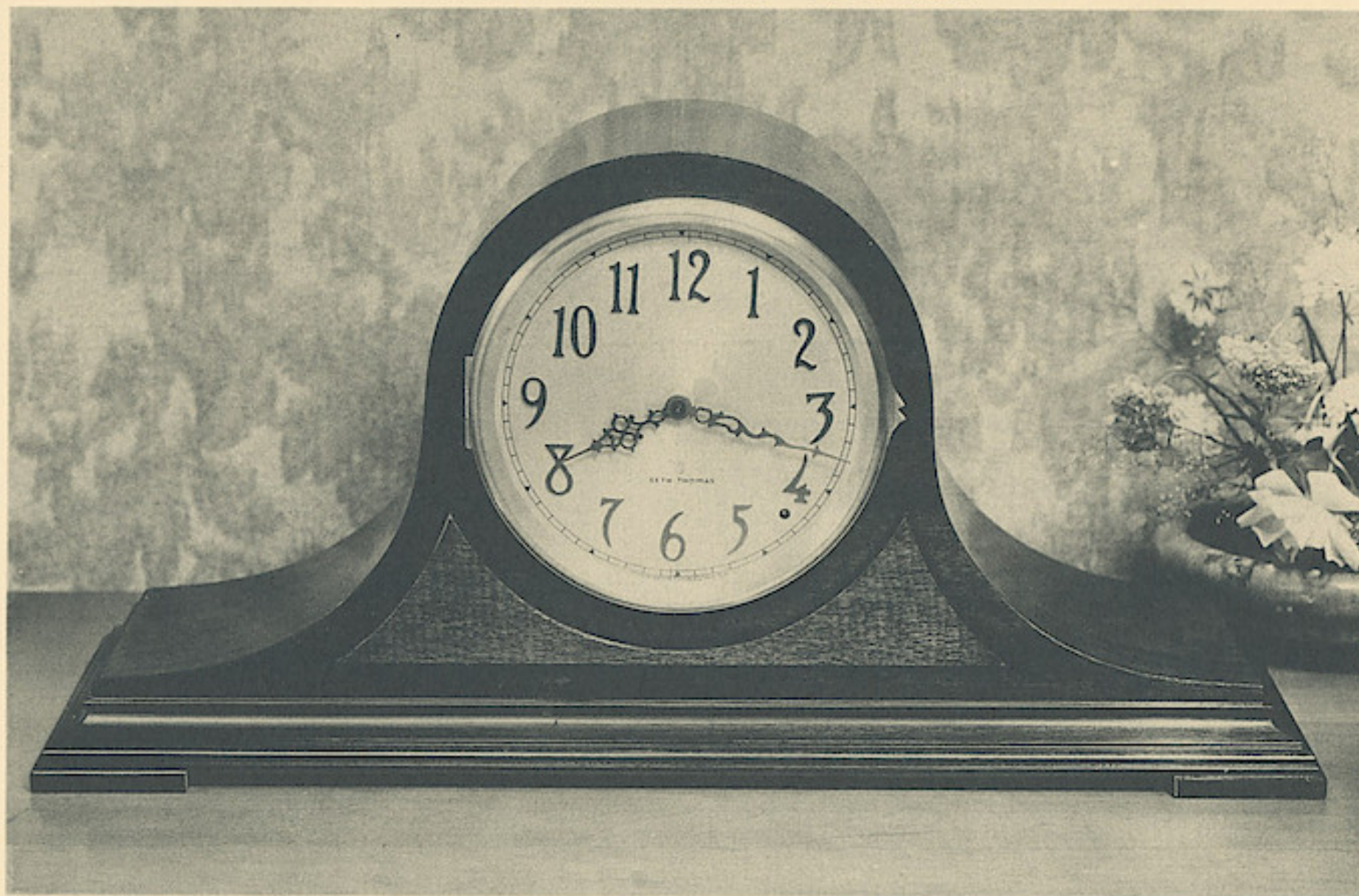
E
L
E
C
T
R
I
C

Fluxford . . \$22.50

Synchronous Electric

GENUINE mahogany case with contrasting panels. 5-inch silvered dial with raised bronze numerals. Self-starting synchronous electric. Strikes hours and half hours on gong of the finest bell metal. Height $9\frac{1}{4}$ inches. Width 20 inches.

SETH THOMAS CLOCKS



E
L
E
C
T
R
I
C

Synchronous Electric

Wickford . . \$49.75

THE aristocrat of Chime clocks. The Wickford has genuine mahogany case with contrasting panels of "fiddle back" wood. 6-inch silvered dial with raised bronze numerals. Self-starting synchronous electric. Each passing quarter hour is marked with the old familiar tones of the Westminster Chimes. Height $10\frac{3}{8}$ inches. Width $20\frac{3}{4}$ inches.

SETH THOMAS CLOCKS

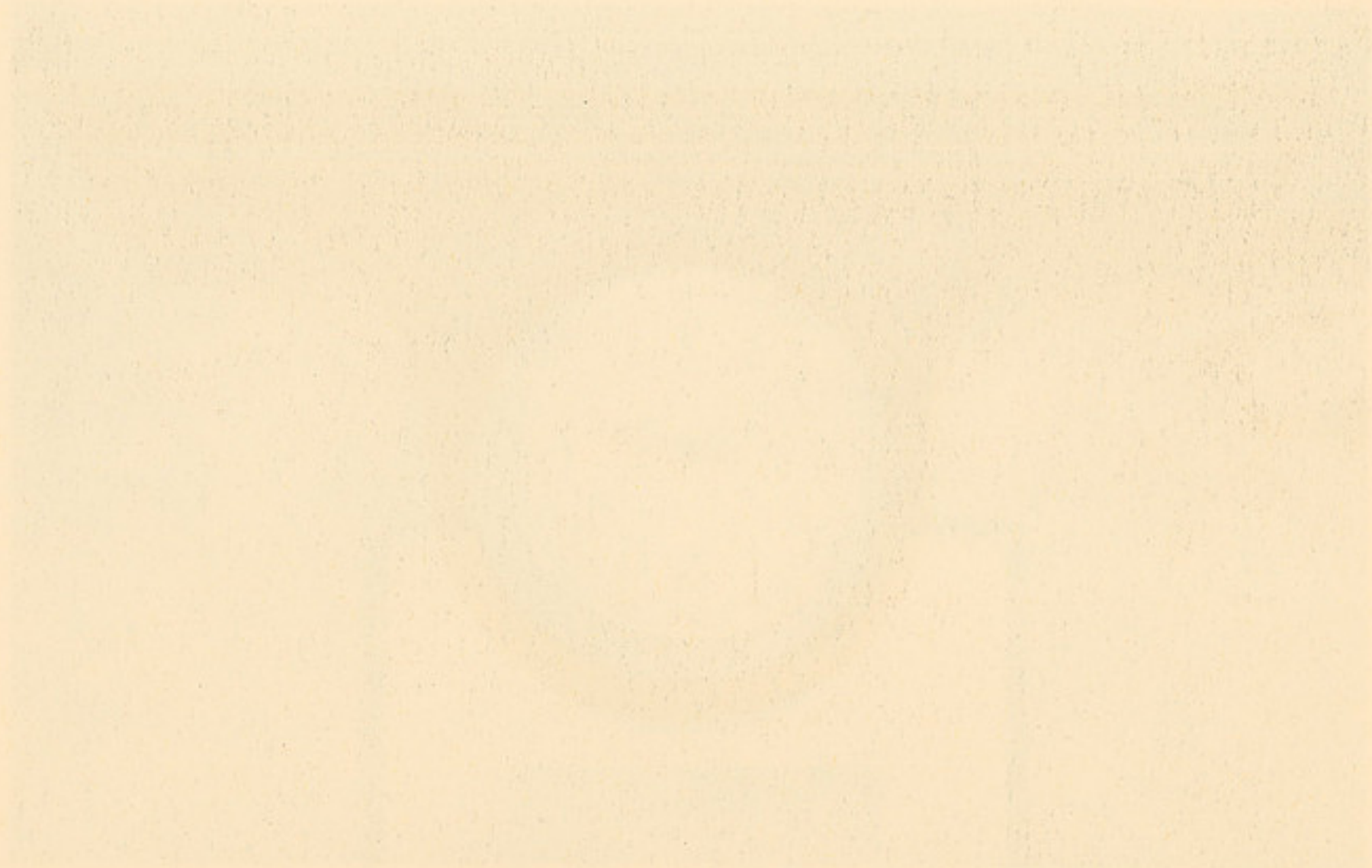


E
L
E
C
T
R
I
C

Synchronous Electric

Bradford.. \$34.50

AN exquisite Westminster Chime clock in a size adaptable to the modern home. Mahogany case. 5-inch silvered dial with raised numerals of genuine bronze. Self-starting synchronous electric motor. The chimes of Westminster are reproduced on five perfectly tuned rods. Height $9\frac{1}{8}$ inches. Width $20\frac{3}{4}$ inches.



C
I
B
J
C
E
F
E

Windows App : Images To PDF Maker