

Windows App : Images To PDF Maker

JOD & MANN

JEWELLERS

GRANVILLE

VER, B.

SETH THOMAS CLOCKS





SETH THOMAS CLOCK COMPANY

Catalog of Mantel Clocks, No 777

1813 - 1926

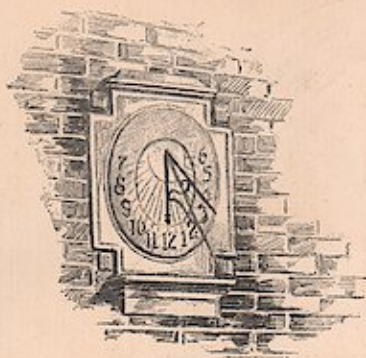
CLOCKS FOR EVERY NEED

Westminster Chime clocks; Jewelled Escapement Striking clocks and timepieces; Ship's Bell clocks for home and nautical use; Boudoir and Desk clocks; Banjo clocks; three distinct types of Pendulum Mantel Striking clocks, each with great variety of patterns; Hanging clocks of various types, pendulum, spring and lever; Weight Regulators; Metronomes; Alarms; Tower clocks; Post and Bracket clocks; Self-contained Electric clocks; Special Clock Movements for numerous recording and registering devices.

NEW YORK
19 West 44th Street

CHICAGO
215 West Randolph Street

SAN FRANCISCO
278 Post Street



The Interior Decorator is helping the Jeweler

AN IMPORTANT new factor has come into the jewelry business—one that every progressive jeweler will want to understand and use to his own profit.

Most items in a jeweler's stock are for personal adornment and are bought from motives of vanity. This is a luxury business, fluctuating violently with prosperity and the seasons. Not so with Seth Thomas Clocks in which there is a constant public interest readily stimulated by newspaper and other advertising.

Due to the efforts of magazine editors and interior decorators, the last few years have seen a tremendous increase of interest in home decoration. Women are spending millions of dollars in modernizing and beautifying their homes. Many merchants have profited by this trend that is based on the fundamental instinct to have attractive, correct surroundings. They have found this business to be steady in good times and bad, in season and out of season, because the human appeal of "home" never changes.

Due to the efforts of Seth Thomas in educating decorators, writers, artists and editors—supplemented by tremendous national advertising—Seth Thomas Clocks have become a vital part of every

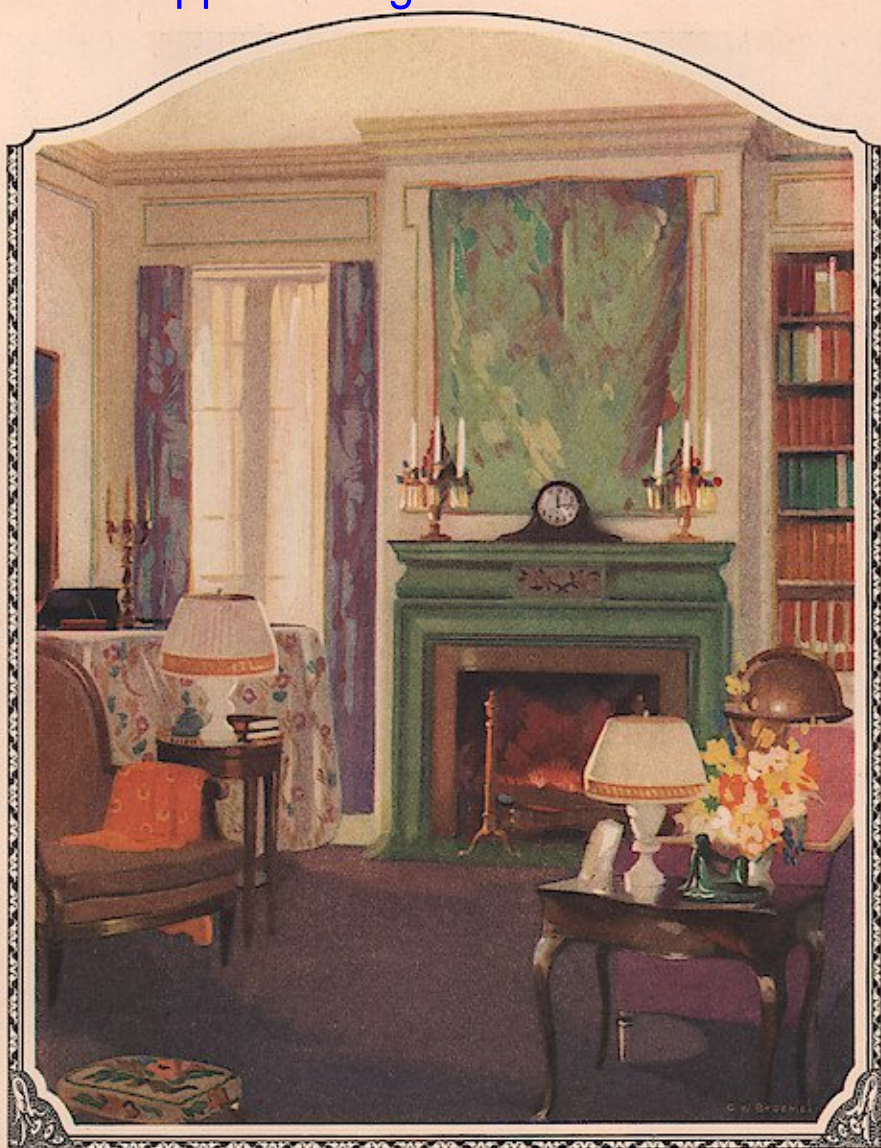
smart, modern interior. The craze for clocks is becoming bigger every month.

At last the jeweler has come into position to share the profits of the home decoration business! Today Seth Thomas Clocks must be considered as decorations as well as time-pieces. Seth Thomas Clocks are the vogue to lend a touch of animation and beauty to interiors of every type.

There are Seth Thomas Clocks carefully designed for every style of interior, from the severest Early Colonial to the most ornate French salon. All the great periods of furniture have contributed to Seth Thomas models.

To aid the jeweler in consulting with his patrons on the best type of Seth Thomas for different *types* of interiors, famous decorators have studied the Seth Thomas line. Here and there in this catalog you will find brief suggestions to help you in selecting the most appropriate clock for any type of room.

The jeweler who studies his Seth Thomas stock and can aid patrons in choosing the proper clock will soon find this class of business to be steady, dependable, ever-growing and remarkably profitable.



Chime Clocks

SETH THOMAS chime clocks are equipped with two different chime arrangements—the "Westminster" and the "Seth Thomas." The clear, well-rounded tones of these chimes in Seth Thomas Clocks are obtained by the use of rods that are scientifically made and perfectly tuned.

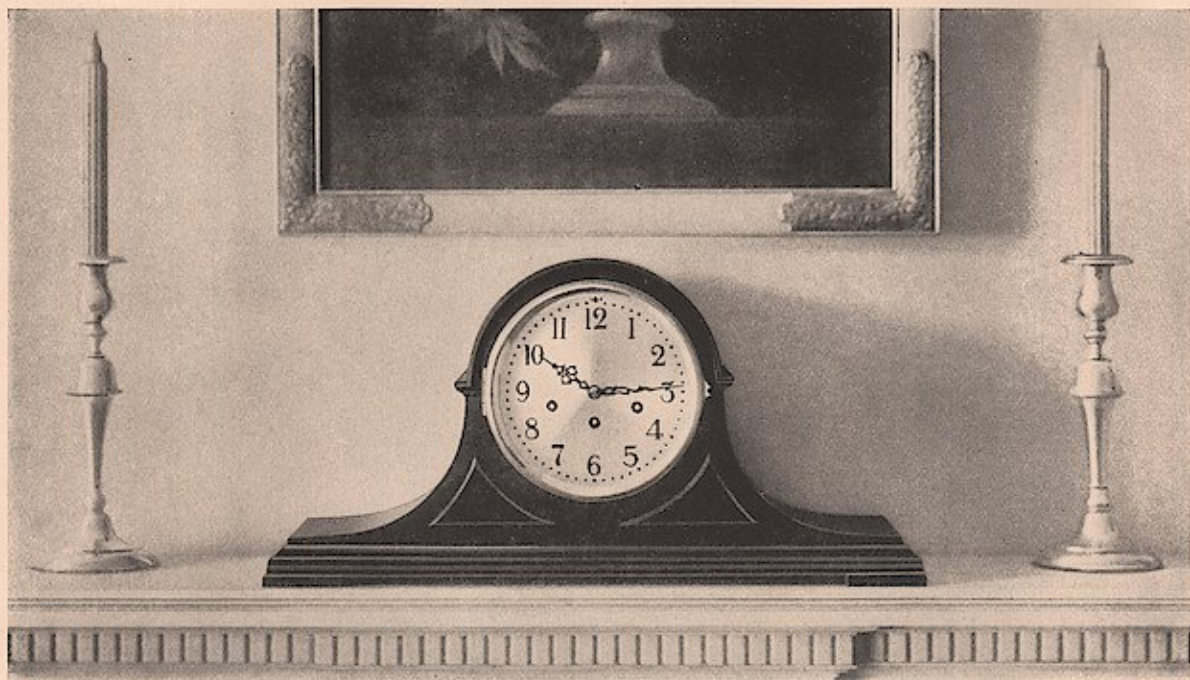
The Westminster Chime was devised by Dr. Croft in 1870 for the tower of Westminster Abbey. Four notes are used—B, E, F# and G#—which announce each quarter hour with four strokes on the first quarter, eight on the second quarter, twelve on the third quarter and sixteen on the hour. There is a separate, deep-toned rod for the hour strike.

The Seth Thomas Chime is a new and pleasing arrangement of chime notes. It has the same number of strokes as the Westminster

Chime with a different musical score. The arrangement of the notes is patented and found only in Seth Thomas Clocks. The notes used to obtain the variation of the quarter hours are C, A, F and middle C. (It is available in Chime Clocks No. 78, 90 and 92.)

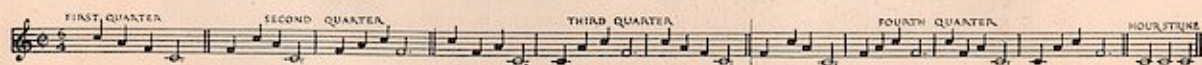
Two types of movements are used. The No. 113 is unquestionably the masterpiece of chime movements. It is ruggedly substantial and finely accurate with pinions of solid cut steel and wheels cut from heavy brass. Many parts are nickel and gold plated.

The No. 124 is a smaller, more compact movement built to do the same work as the No. 113. Its size permits its use in smaller cases—its thoroughly reliable service has made the clocks with which it is equipped the most popular that have ever been produced.



CHIME No. 74

Mahogany. Height 9 $\frac{3}{4}$ inches. Base 20 $\frac{1}{2}$ inches. Depth 7 inches. 6 inch Silvered Dial. Also with Raised Bronze Numerals. Westminster Chime.



Copyright, 1925, Seth Thomas Clock Co., Thomaston, Conn.

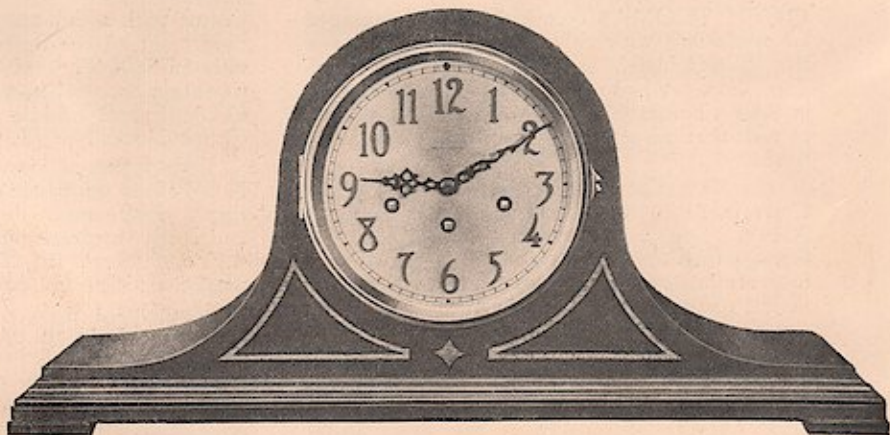
(Arrangement of Seth Thomas chime notes)

CHIME clocks Nos. 74, 78 and 75 are the largest of Seth Thomas Tambour clocks. They are particularly

desirable for the more spacious living room. The finest grade chime movement (No. 113) is used.

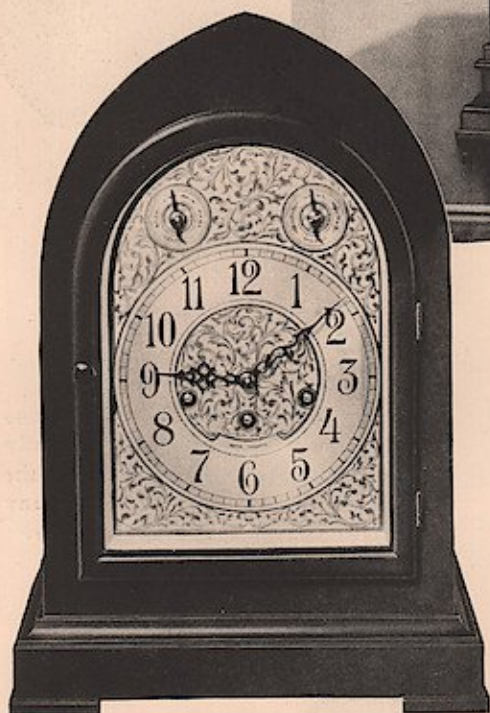
CHIME No. 78

Mahogany with two toned wood design. 6 inch Silver Dial. Also with Raised Bronze Numerals. Height 10 inches. Base 20 $\frac{1}{2}$ inches. Depth 7 inches. Seth Thomas Chime.



Chime Clocks

THE greater volume of tone so admired in this group of clocks is obtained by the use of longer chime rods, which larger cases permit.



CHIME No. 72

Inspired by the great Gothic masterpieces. Height 14 3/4 inches. Width 10 1/4 inches. Depth 7 5/8 inches. Etched green gold dial. Westminster chime movement No. 113.

CHIME No. 75

Adapted to club room and pretentious private interior. Height 9 3/4 inches. Base 22 1/2 inches. Depth 6 7/8 inches. 6 inch silver dial. Also with Raised Bronze Numerals. Westminster chime movement No. 113.



CHIME No. 73

An Old-English design embodying the finest artistry and craftsmanship of its makers. It is the most expensive and unquestionably the most handsome of Seth Thomas chime clocks. The dial is of pierced gold. Westminster chime movement No. 113. Height 13 7/8 inches. Width 10 3/4 inches. Depth 7 3/8 inches.



CHIME No. 91

Popular both in price and design. Mahogany case. Height 9 1/2 inches. Base 20 1/2 inches. Depth 5 3/4 inches. 5 inch silver dial. Westminster chime movement No. 124.

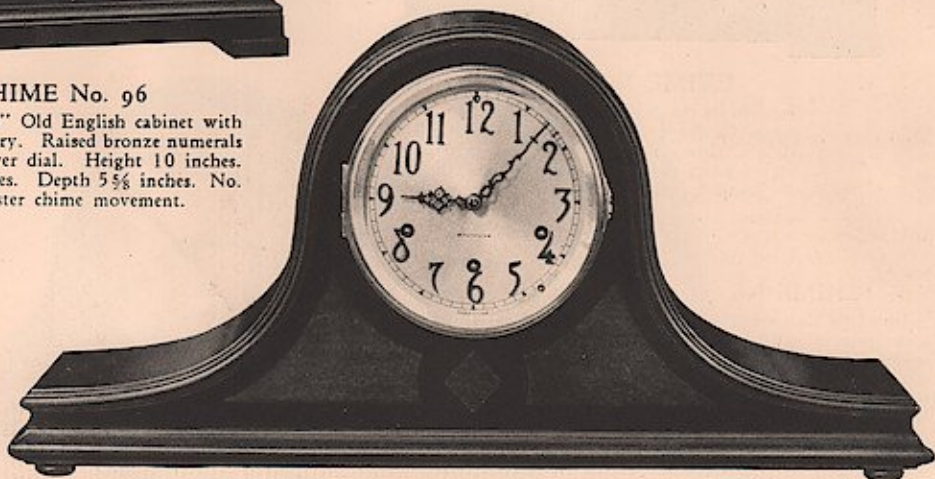


CHIME No. 96

"Broken Arch" Old English cabinet with inlaid marquetry. Raised bronze numerals on 5 inch silver dial. Height 10 inches. Base 8 1/4 inches. Depth 5 3/4 inches. No. 124 Westminster chime movement.

CHIME No. 93

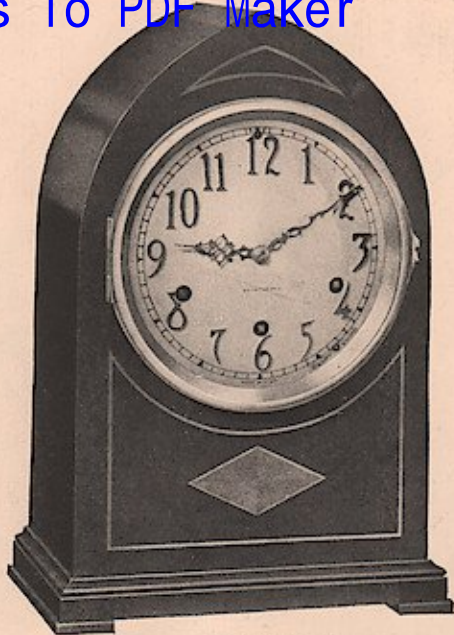
Mahogany case of two toned wood. Height 9 1/2 inches. Base 20 1/4 inches. Depth 5 3/4 inches. Raised bronze numerals on 5 inch silvered dial. Westminster chime movement No. 124.



CHIME clocks with cases of two-tone mahogany or inlaid are especially desirable for rooms furnished in the Georgian manner or in modern mahogany inspired by Sheraton and Chippendale.

Chime Clocks

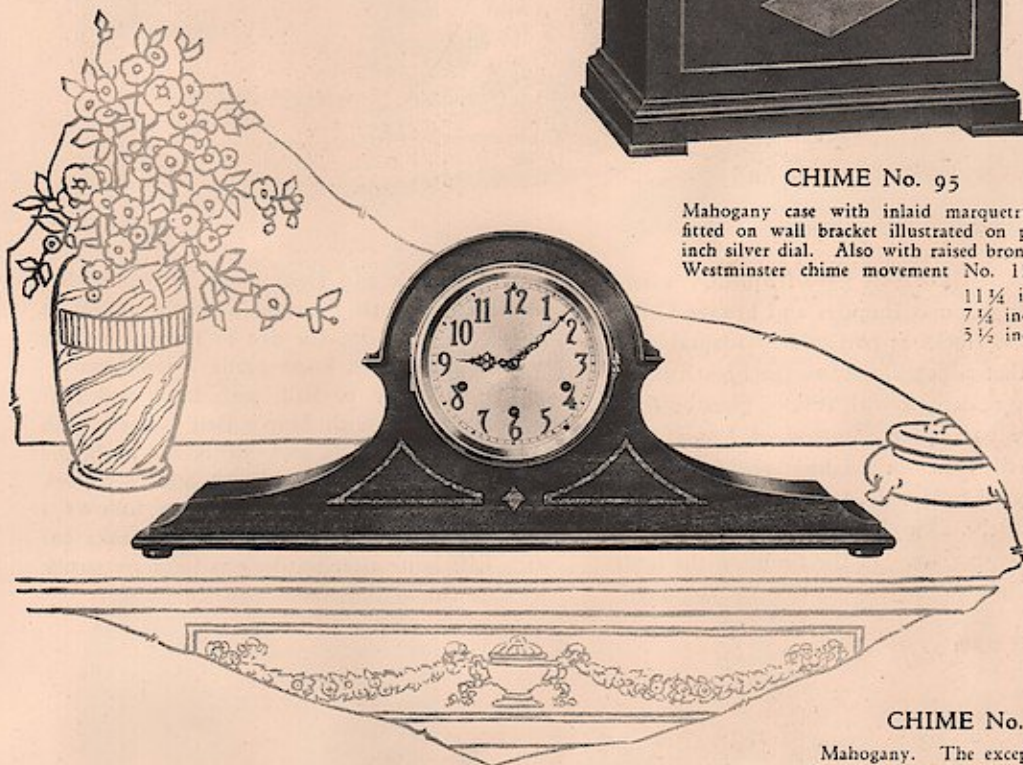
THESE Tambour and Upright chime clocks represent exceptional value. Five perfectly tuned rods are used to obtain the beautiful arrangement of chime notes. With the exception of Chime No. 90, all of these models are equipped with the Westminster Chime. No. 90 is available with Seth Thomas Chime only and No. 92 with the Westminster or Seth Thomas Chimes. No. 95 and No. 96 are the smallest chime clocks manufactured in this country.



CHIME No. 95

Mahogany case with inlaid marquetry. May be fitted on wall bracket illustrated on page 35. 5 inch silver dial. Also with raised bronze numerals. Westminster chime movement No. 124. Height

11 1/4 inches. Base
7 1/4 inches. Depth
5 1/2 inches.

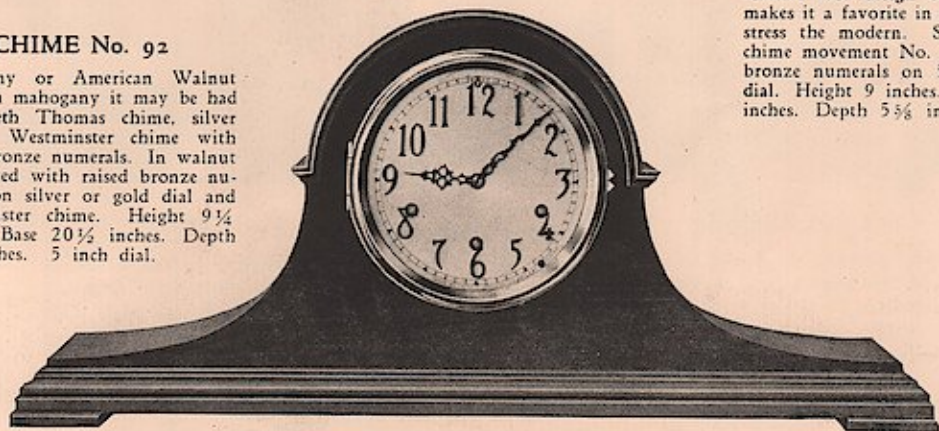


CHIME No. 90

Mahogany. The exceptionally attractive case design of this model makes it a favorite in interiors that stress the modern. Seth Thomas chime movement No. 124. Raised bronze numerals on 5 inch silver dial. Height 9 inches. Base 21 1/4 inches. Depth 5 3/8 inches.

CHIME No. 92

Mahogany or American Walnut case. In mahogany it may be had with Seth Thomas chime, silver dial or Westminster chime with raised bronze numerals. In walnut it is fitted with raised bronze numerals on silver or gold dial and Westminster chime. Height 9 1/2 inches. Base 20 1/2 inches. Depth 5 7/8 inches. 5 inch dial.

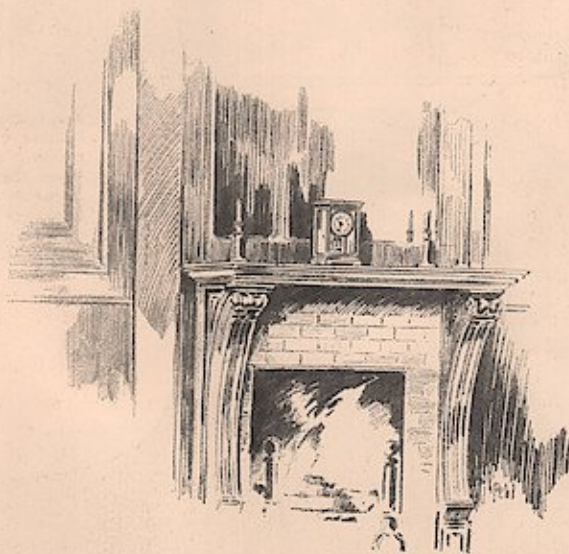


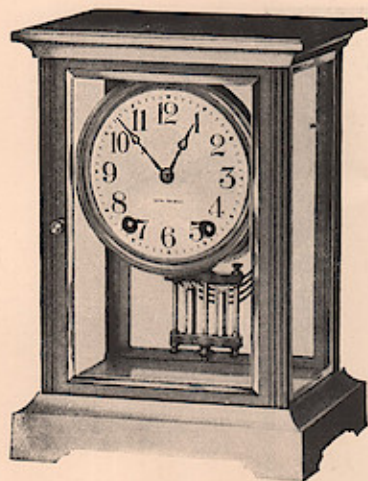


Metal Mantel Clocks and Ship's Bell Clocks

INTERIOR decorators have frequently selected Seth Thomas Empires and bronze Celtic and Denton clocks as particularly adaptable to interiors that adhere closely to the French manner. Empire designs with beveled glass on four sides trace back to the period of Louis XV. Undoubtedly the originators recognized, as decorators do today, the touch of life and animation in the swinging pendulum which remains open to view. In the Empires, the hour and half hour is struck on bell metal gong.

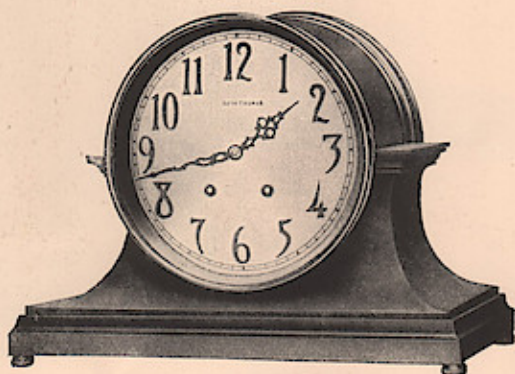
The Celtic and Denton are so thoroughly masculine that they possess a special appeal as gifts to men or for the den or library. They are equipped with finest grade 7-jewel movements and may be had with hour and half hour strike or with Ship's Bell strike. Seth Thomas Ship's Bell movements are authentic and self-adjusting. At 8, 12 and 4 o'clock eight bells are struck. One stroke follows a half hour later with one additional stroke for each half hour after until eight bells are struck to start the cycle again.





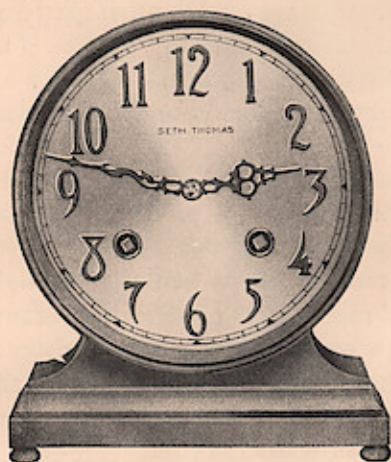
EMPIRE No. 201

Rich gold finish. Square corners. 4 inch silvered dial No. 120 eight day pendulum movement with hour and half hour strike. Height 9 3/4 inches. Width 6 3/4 inches.
EMPIRE NO. 301. Same as No. 201 in brushed brass finish.



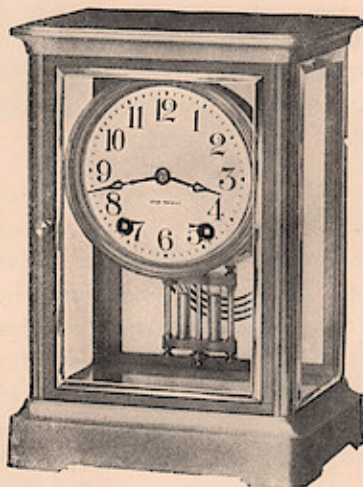
CELTIC

Bronze finish. 6 inch silvered dial with raised bronze numerals. Eight day, 7-jewel lever movement No. 105 with hour and half hour strike, or eight day, 7-jewel ship's bell movement No. 115. Height 8 3/4 inches. Base 11 inches.



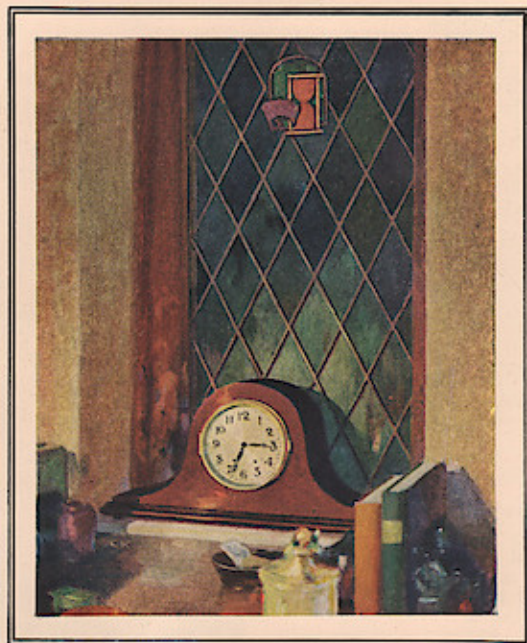
DENTON

Bronze finish. 6 inch silvered dial with raised bronze numerals. Eight day, 7-jewel lever movement No. 105 with hour and half hour strike, or eight day, 7-jewel ship's bell movement No. 115. Height 8 3/4 inches. Base 8 1/4 inches.



EMPIRE No. 200

Rich gold finish. Rounded corners. 4 inch silvered dial No. 120. Eight day pendulum movement with hour and half hour strike. Height 9 3/4 inches. Width 6 1/2 inches.
EMPIRE NO. 300. Same as No. 200 in brushed brass finish.



Mantel, Shelf and Bracket Clocks of Fine Quality

IN THE group of clocks illustrated on pages 11 to 14 will be found some of the finest examples of modern cabinet designing and craftsmanship.

Recognizing the peculiar sentiment that almost invariably surrounds a clock in the home, Seth Thomas has endeavored to build into these fine clocks a grace of design that cannot be made less attractive by changing modes or fashions. The greatest care is used in the selection and finishing of woods so that a dozen or many years will not deteriorate their beauty.

Both mahogany and walnut have been employed in modeling this group of clocks. The Severn, Tambour 7 and Tambour 18 are available in walnut as

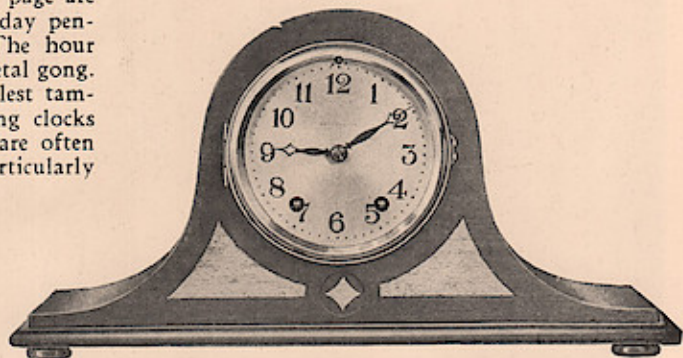
well as mahogany. All other patterns may be had in mahogany only. The need of small striking clocks is filled with the Tambour 1, Tambour 3 and Essex.

Into all these cases has been fitted the finely made No. 120 pendulum movement illustrated on page 38. The No. 120 is capable of particularly accurate time and many years of service. Because of its fine construction it requires somewhat more careful handling than might be accorded a movement from which less accurate results are expected.

The incomparable Seth Thomas bell metal gong is used in all of the clocks of this group. Its mellow, lingering tone will truly "bring life to any room."

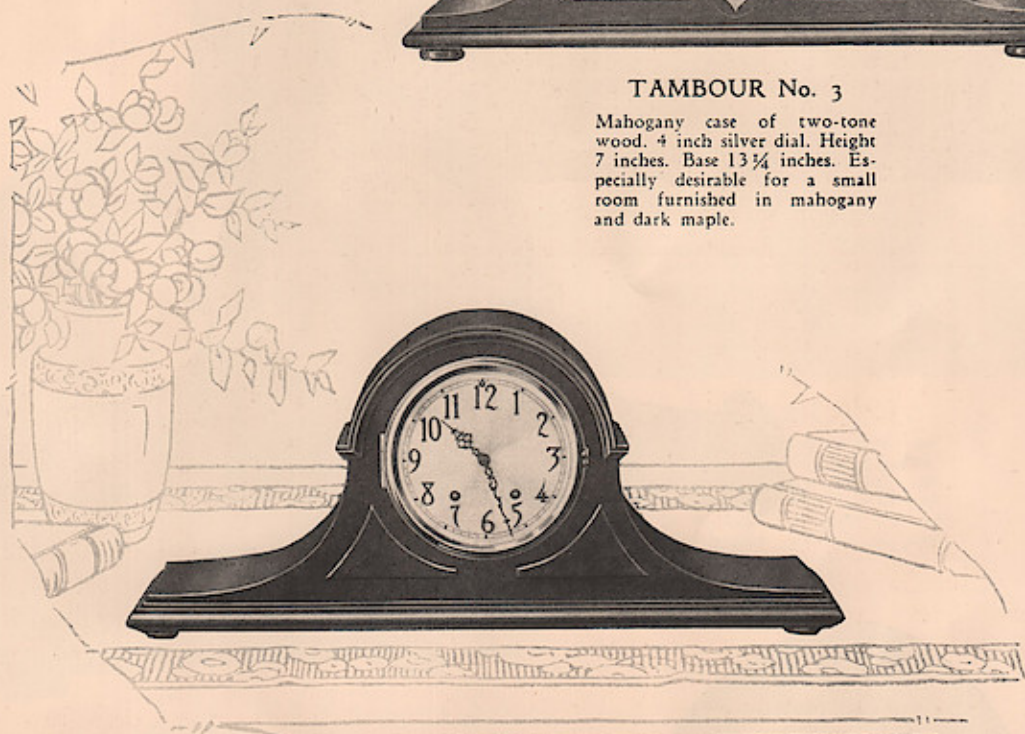
Tambour Clocks

THE clocks illustrated on this page are equipped with fine round 8-day pendulum movement No. 120. The hour and half hour is struck on Bell Metal gong. Tambours 1 and 3 are the smallest tambour hour and half hour striking clocks made by Seth Thomas. They are often used in the boudoir and are particularly adaptable for smaller mantels.



TAMBOUR No. 3

Mahogany case of two-tone wood. 4 inch silver dial. Height 7 inches. Base 13 1/4 inches. Especially desirable for a small room furnished in mahogany and dark maple.



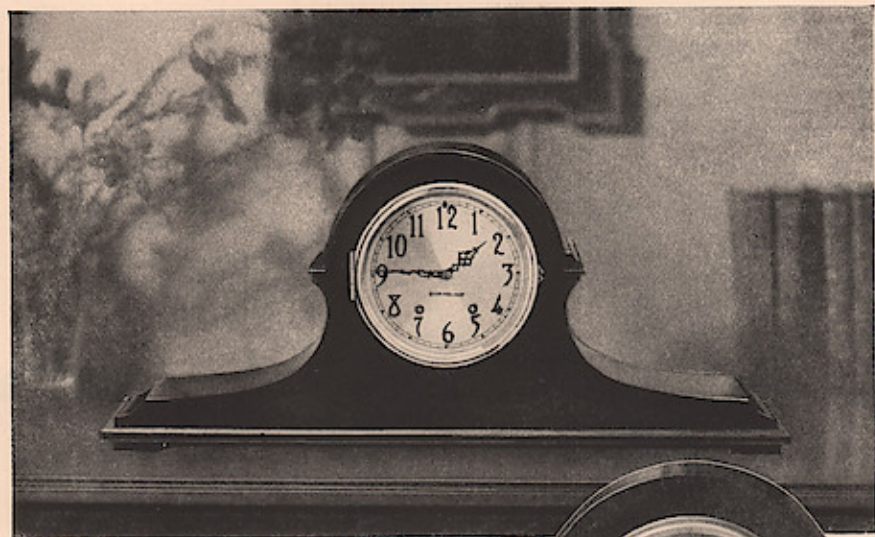
TAMBOUR No. 18

Mahogany or American walnut. Raised bronze numerals on 5 inch silver or gold dial. Height 9 inches. Base 20 inches. The rich moulding which finishes the curve of Tambour No. 18 makes it desirable for rooms where beautifully upholstered furniture and fine mahogany predominate.

TAMBOUR No. 1

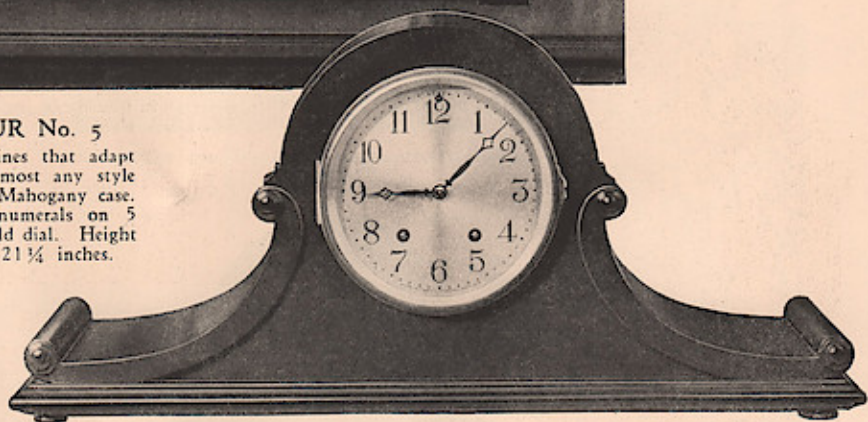
Mahogany case. 4 inch silver dial. Also with raised bronze numerals. Height 7 1/4 inches. Base 15 3/4 inches. A smartly simple clock of small proportions for the modern living room or dining room.





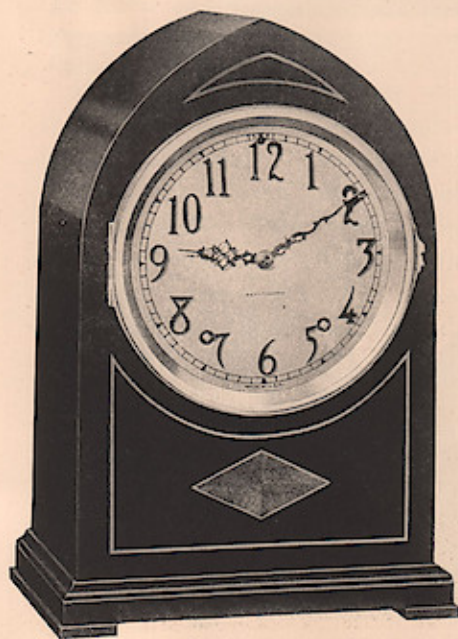
TAMBOUR No. 5

Full, graceful lines that adapt themselves to almost any style of decoration. Mahogany case. Raised bronze numerals on 5 inch silver or gold dial. Height 9 inches. Base 21 1/4 inches.



TAMBOUR No. 6

The hand carving is rich enough to help carry out an ornate decorative motif. Mahogany case. 5 inch silver dial. Height 9 inches. Base 20 inches.



FITTED with fine round 8-day No. 120 movement. Hour and half hour strike on Bell Metal gong. The rich carving or the inlaid marquetry of these cases fits them for use in the most luxurious interiors where mahogany predominates in the furnishings.

WHITBY

Mahogany case with beautiful inlaid marquetry. May be fitted on wall bracket (illustrated on page 35). Height 11 1/4 inches. Base 7 1/4 inches. Raised bronze numerals on 5 inch silver dial.

Tambour and Cabinet Clocks

THE Severn, Locarno and Tambour 7 are fitted with fine round 8-day movement No. 120 and Bell Metal gong which strikes the hour and half hour in deep, pure, resonant tones. The Severn may be fitted to Wall Bracket.



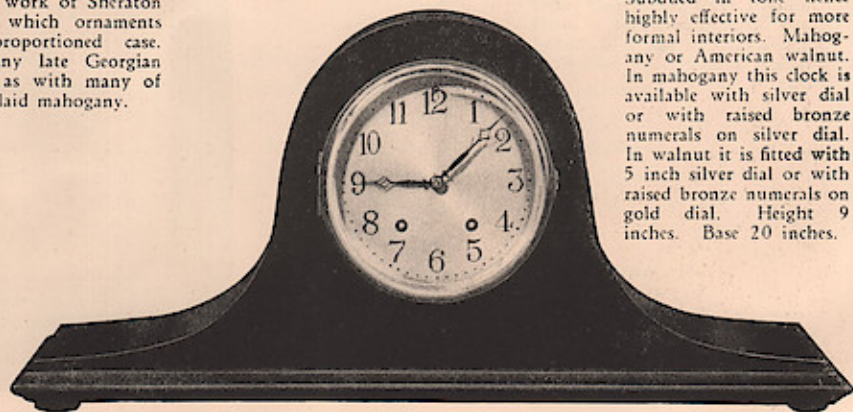
LOCARNO

Mahogany case with inlaid marquetry design. Height 10 inches. Base 8 3/4 inches. Raised bronze numerals on 5 inch silver dial. The delicate inlay characteristic of the work of Sheraton and his followers, which ornaments this beautifully proportioned case, harmonizes with any late Georgian marquetry, as well as with many of the new pieces of inlaid mahogany.



SEVERN

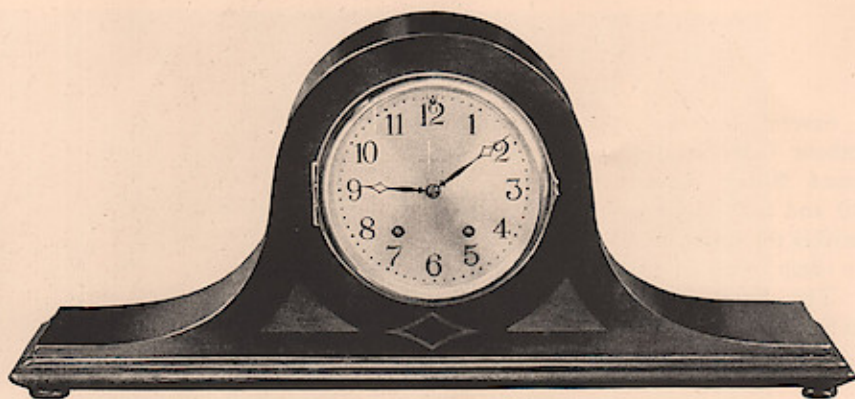
Mahogany or American walnut case of two tone wood. Height 10 inches. Base 7 1/4 inches. In mahogany, the Severn is available with 5 inch silvered dial. In walnut with silver dial or with raised bronze numerals on gold or silver dial.



TAMBOUR No. 7

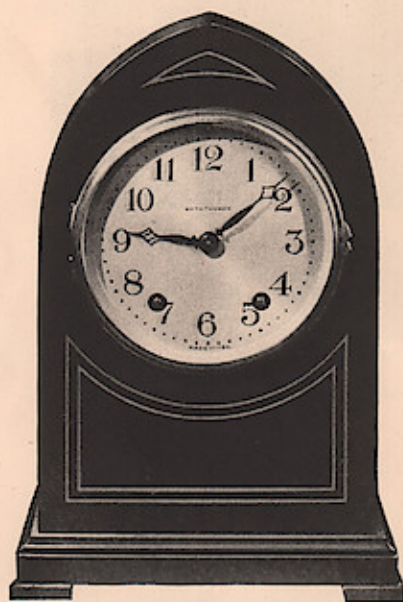
Subdued in tone hence highly effective for more formal interiors. Mahogany or American walnut. In mahogany this clock is available with silver dial or with raised bronze numerals on silver dial. In walnut it is fitted with 5 inch silver dial or with raised bronze numerals on gold dial. Height 9 inches. Base 20 inches.

Tambour and Cabinet Clocks



TAMBOUR No. 20

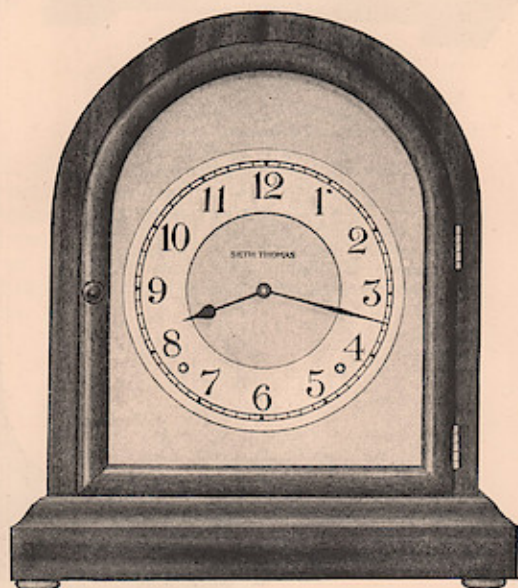
Mahogany case with two-tone wood design. 5 inch silver dial. Height 9 inches. Base 20 inches.



ESSEX

The smallest of Seth Thomas upright type clocks strike with hour and half hour strike. Inlaid mahogany. Height 9½ inches. Base 6½ inches. 4 inch silver dial.

FITTED with fine round 8-day movement No. 120. The hour and half hour are struck on bell metal gong. English clocks of the XVIIIth Century inspired these compact cabinet clocks. They are particularly good in formal rooms of William and Mary or Early Colonial spirit.



DUNDEE

Mahogany case. Silver mat and dial with 4½ inch minute circle. Height 10½ inches. Base 8¾ inches.



*New England Shelf and Banjo Clocks
as Seth Thomas made them at Plymouth Town*

LOVERS of antiques and collectors of clocks always find joy in the quaintness of old New England Clocks. Seth Thomas is today the only original manufacturer of these clocks in the world.

Similar patterns to some of the clocks shown on this page have been made by Seth Thomas for one hundred and thirteen years at that part of Plymouth now known as Thomaston in honor of the founder.

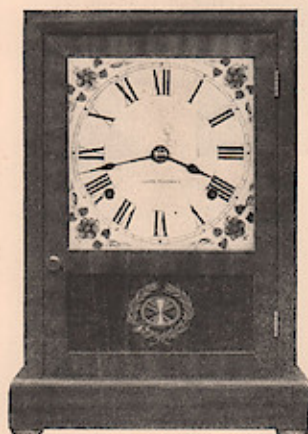
THE Banjo clock was originated by Simon Willard in 1801. Its popularity has journeyed along through the years gaining in vigor recently with the addition of smaller adaptations by Seth Thomas. Some handsome designs such as the Dover, Danvers and Ramsgate have been particularly favored for the boudoir, den, hallway or dining room. Certainly they are the centerpiece of attraction in whatever room they are placed.

For the larger wall space there is the Banjo No. 1, an authentic reproduction of an original Willard. Among this group will also be found the Banjo No. 2 which strikes the hour and half hour on a gong of pleasing tone. Other models are equipped with time movements only.



CONCORD

Mahogany case. Decorated dial with 5 inch minute circle. Picture of Independence Hall in lower panel. Eight day movement No. 89, striking hour and half hour on Bell Metal Gong. Height 17 inches. Base 9 1/2 inches.

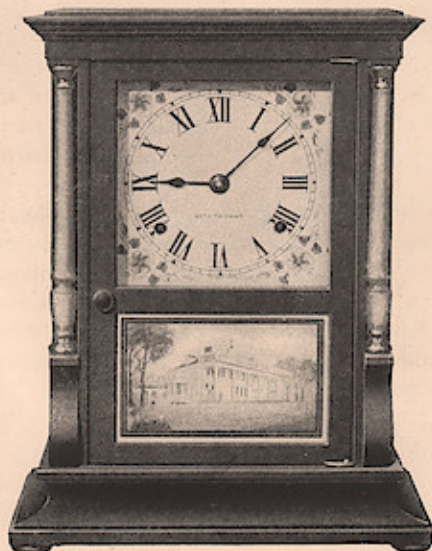


SALEM

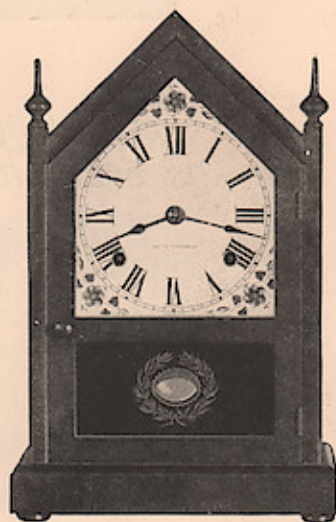
Mahogany finish. 5 inch decorated dial. Eight day movement No. 89. Strikes hour and half hour on Cathedral gong. Height 12 3/4 inches. Base 9 1/4 inches.

GILT COLUMN

Mahogany case with gold finished columns. Decorated dial, 5 inch minute circle. Lower panel pictures Mt. Vernon. Eight day movement No. 89. Bell Metal Gong striking hour and half hour. Height 14 inches. Base 11 inches.

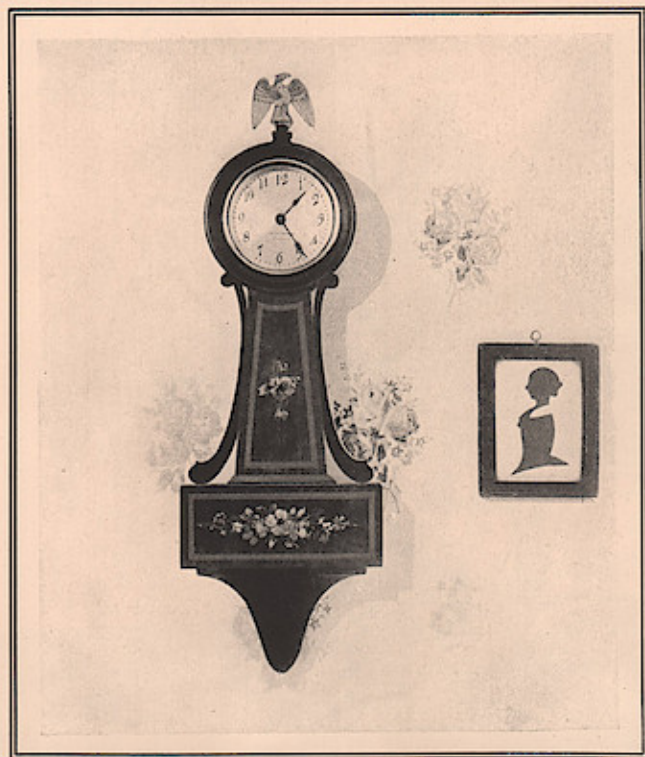


AUTHENTIC reproductions of Early American shelf clocks, any of these are particularly good with furnishings of the Third Period (1775-1825).



SHARON

Mahogany finish. 5 inch decorated dial. Eight day movement No. 89. Hour and half hour strike on Cathedral gong. Height 14 1/4 inches. Base 9 1/4 inches.



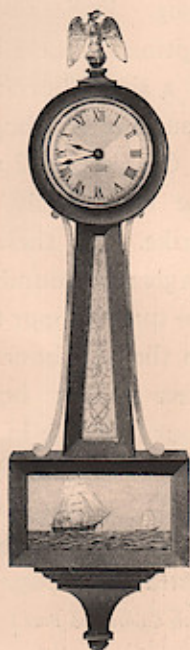
DANVERS

Mahogany case. Border design in gold. Colored flowers in panels. Eight day, 4-jewel lever time movement No. 103A. 3 inch silver dial. Height 18 3/4 inches. Width 6 inches.



DOVER

Mahogany case with two tone wood design. Eight day, 4-jewel lever time movement No. 103A. 3 inch silver dial. Height 18 3/4 inches. Width 6 inches.



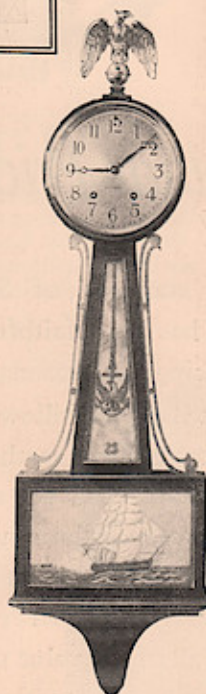
RAMSGATE

Mahogany case and decorated panels. Eight day, 4-jewel lever time movement No. 103A. 3 inch silver dial. Height 21 inches. Width 6 inches.



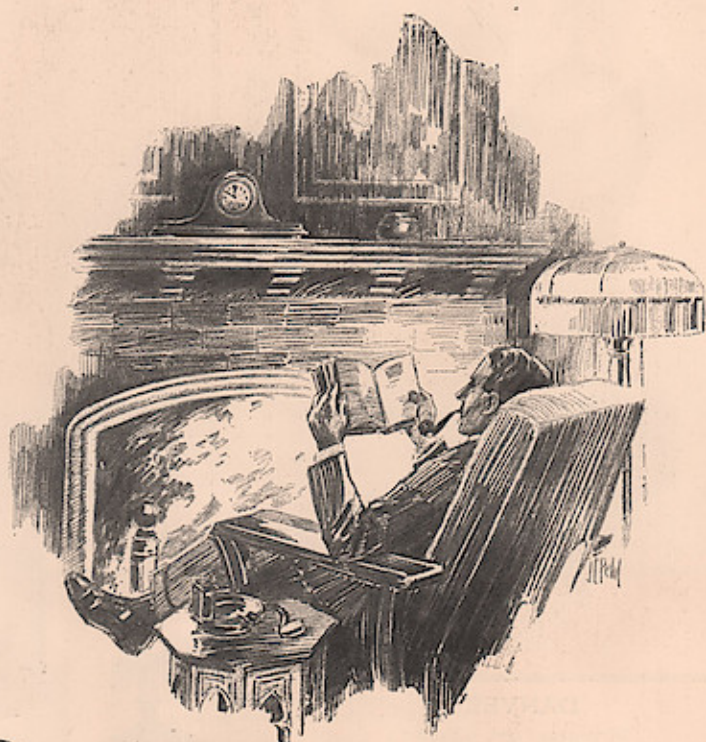
BANJO No. 1

Reproduction of original Willard Banjo clock. Mahogany case and decorated panels. Eight day pendulum time movement No. 123. Also fitted with No. 117 fine seven-jeweled lever time movement. 7 inch dial. Height 37 1/2 inches. Width 10 1/2 inches.



BANJO No. 2

Mahogany case with decorated panels. Eight day, 4-jeweled hour and half hour lever strike movement No. 125. Five inch silver dial. Height 29 inches. Width 8 3/4 inches.



Popular Priced Mantel Clocks

THE century-old standard of Seth Thomas quality has been faithfully adhered to in producing the reasonably priced clocks illustrated in the following pages. While the most modern methods and careful supervision of cost are employed in the manufacture of these models there is always the realization on the part of Seth Thomas craftsmen that every clock *must* guarantee all of the value that the hallmark of Seth Thomas represents.

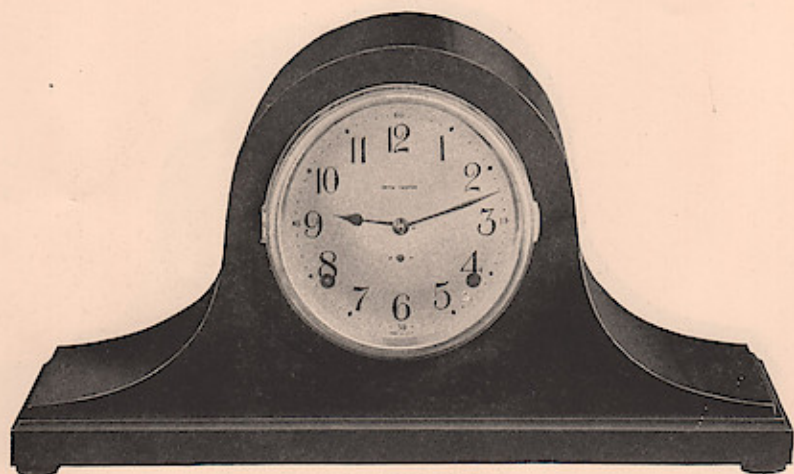
In this group three different strike arrangements have been used. The Leader No. 1 and 2 and Sentinels 1, 6 and 8 strike the hour and half hour on a spiral

gong. In Sentinels 2, 3, 7 and 9 an exceptionally clear tone is given by the use of a single horizontal rod on which the hour and half hour is struck.

Cymbals 1, 2 and 5 are equipped with the enormously popular quarter hour strike. In these clocks there are two single rods sounding different notes. On the quarter hour there are two strokes — on the half hour four strokes — on the three-quarter hour six strokes — the hour is struck in the usual manner. All of the clocks shown on pages 19, 20, 21 and 22 are fitted with the substantial and thoroughly reliable No. 89 movement illustrated on page 39.

(Cases in Mahogany Veneer with Gumwood Base.)

*Tambour and
Cabinet Clocks
Spiral Gong*



SENTINEL No. 1
Spiral Gong

Mahogany case. 5 inch
silvered dial. Height $9\frac{1}{4}$
inches. Base $16\frac{3}{4}$ inches.



SENTINEL No. 6
Spiral Gong

Mahogany case. 5 inch
silvered dial. Height $9\frac{1}{2}$
inches. Base $8\frac{1}{2}$ inches.

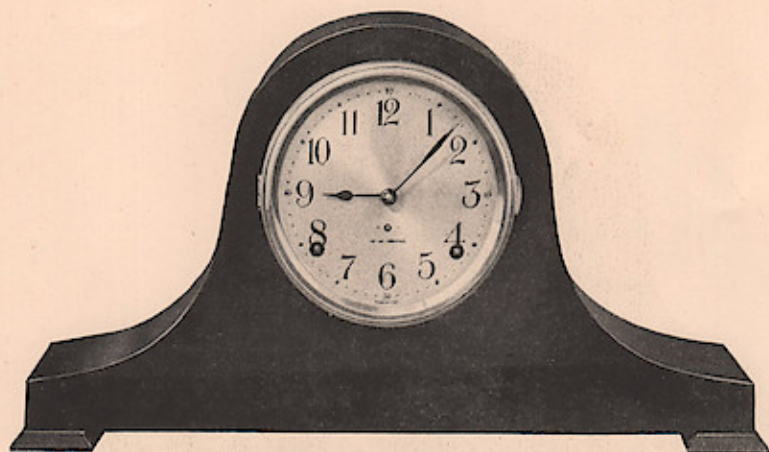
FITTED with substantial 8-day movement No. 89 striking hour and half hour on spiral gong. For comfortable modern rooms in the popular small homes and apartments of today, the trim simplicity of these clocks is particularly desirable.



LEADER No. 2
Spiral Gong

Mahogany case. 5 inch
silvered dial. Height $10\frac{1}{2}$
inches. Base 8 inches.

*Jambour and
Cabinet Clocks
Spiral Gong*

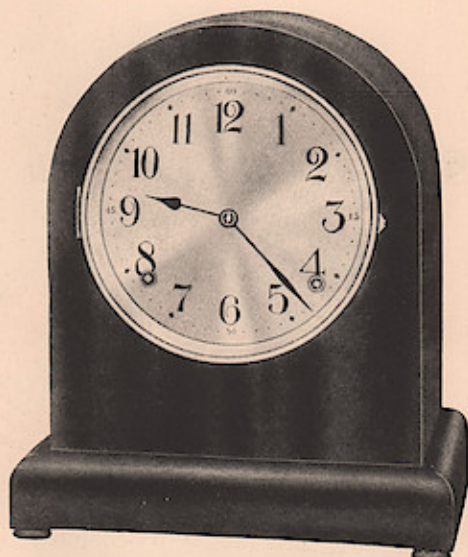


SENTINEL No. 8

Spiral Gong

Mahogany case. 5 inch silvered dial. Hour and half hour strike on spiral gong. Eight day movement No. 89. Height 9 1/4 inches. Base 17 inches.

SINCERITY of line and freedom from elaboration make these medium-sized clocks ideal for use on the modern cabinet or book-case.

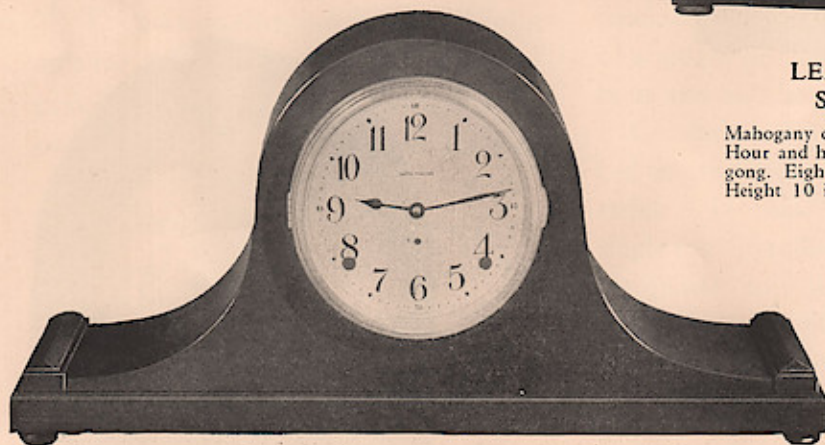


LEADER No. 1

Spiral Gong

Mahogany case. 5 inch silvered dial. Hour and half hour strike on spiral gong. Eight day movement No. 89. Height 10 inches. Base 8 inches.

Rod Strike



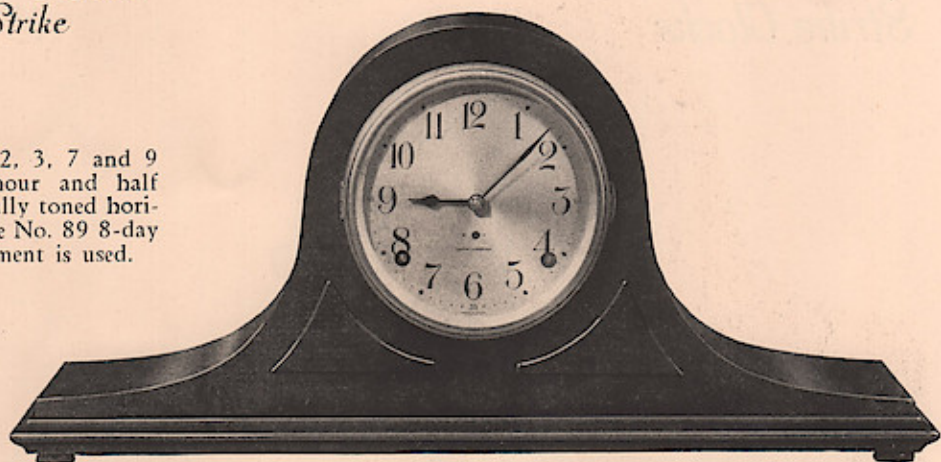
SENTINEL No. 7

Rod Strike

Mahogany case. 5 inch silvered dial. Hour and half hour strike on horizontal rod. 8 day No. 89 movement. Height 9 inches. Base 19 inches.

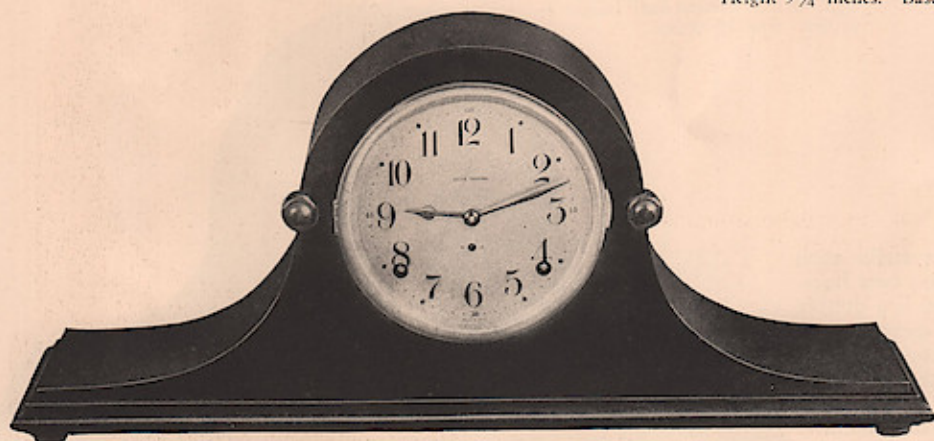
Tambour Clocks
Rod Strike

SENTINELS 2, 3, 7 and 9 strike the hour and half hour on beautifully toned horizontal rod. The No. 89 8-day pendulum movement is used.



SENTINEL No. 9
Rod Strike

Mahogany case. 5 inch silvered dial.
Height 9 $\frac{1}{4}$ inches. Base 20 inches.

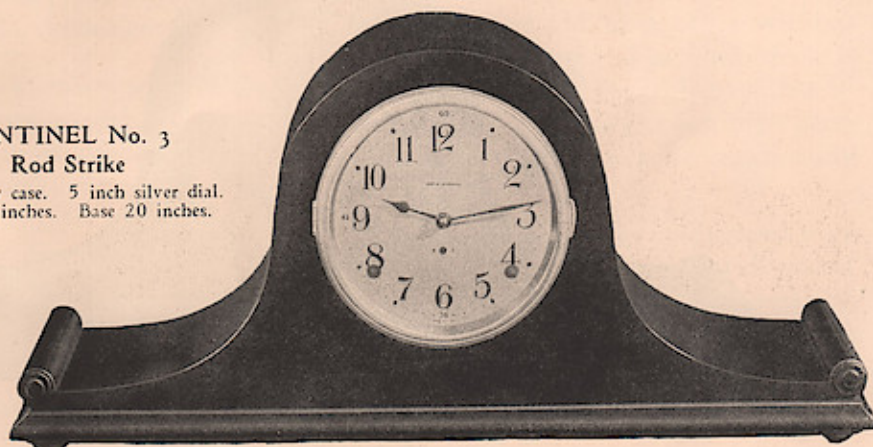


SENTINEL No. 2
Rod Strike

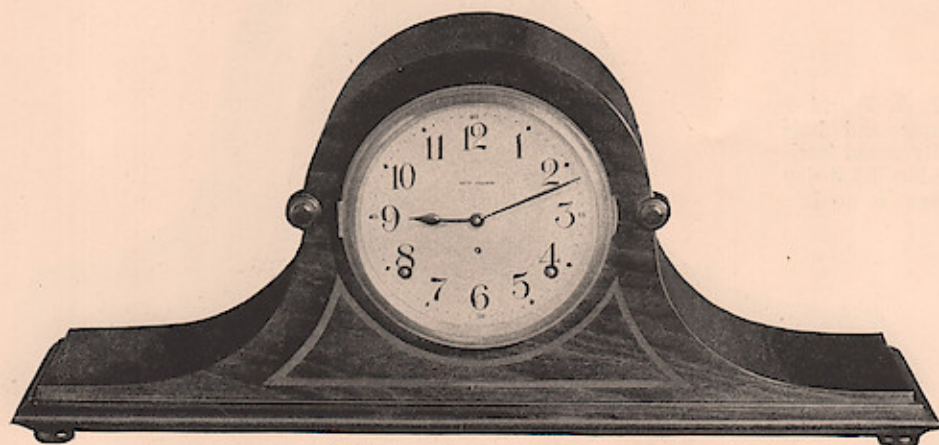
Mahogany case. 5 inch silver dial.
Height 9 inches. Base 20 inches.

SENTINEL No. 3
Rod Strike

Mahogany case. 5 inch silver dial.
Height 9 inches. Base 20 inches.



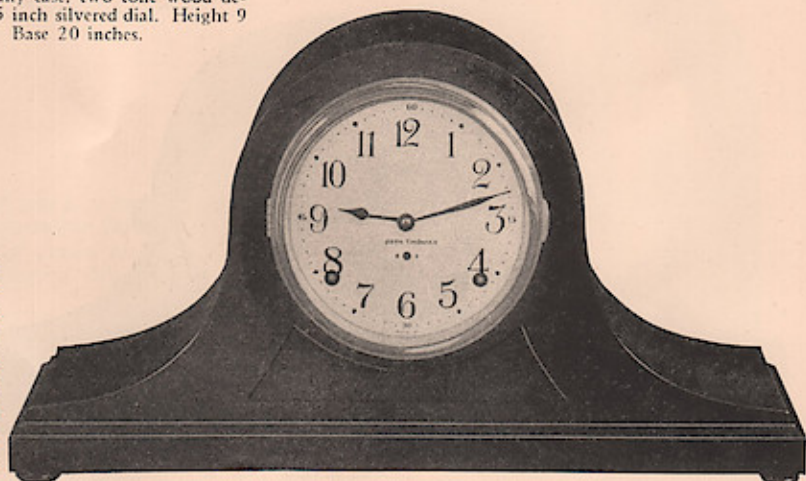
*Quarter Hour
Strike Clocks*



CYMBAL No. 5

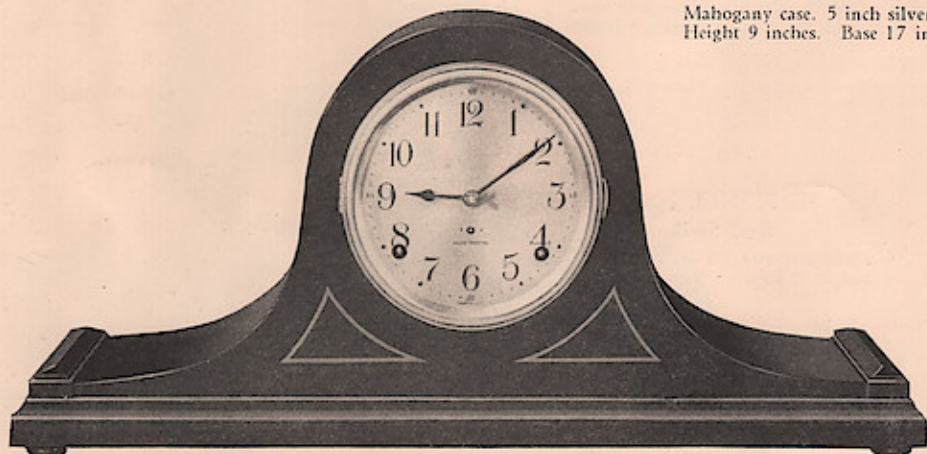
Mahogany case, two tone wood design. 5 inch silvered dial. Height 9 inches. Base 20 inches.

CYMBAL clocks strike each quarter hour on two horizontal rods. There is a double stroke on the first quarter, two double strokes on the half hour and three double strokes on the three-quarter hour. The hour is struck in the usual manner. Fitted with No. 89 movement.



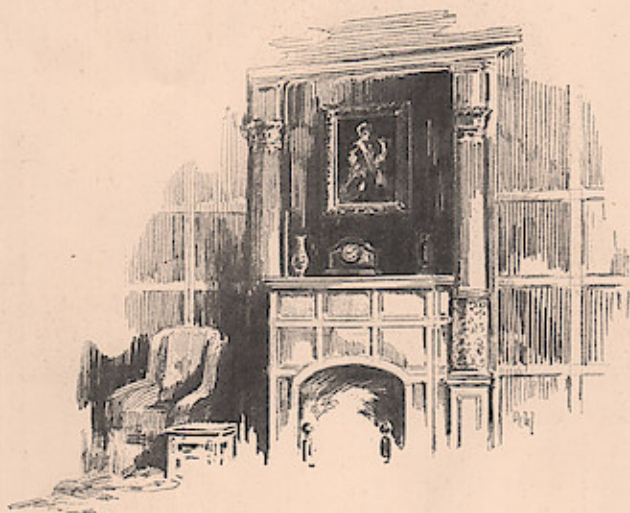
CYMBAL No. 1

Mahogany case. 5 inch silvered dial. Height 9 inches. Base 17 inches.



CYMBAL No. 2

Mahogany case, two-tone wood design. 5 inch silvered dial. Height 9 inches. Base 20 1/4 inches.



Lever Striking Clocks 4-Jeweled

SETH THOMAS has accomplished one of the most important clock developments of recent years in the four jeweled lever strike movement No. 125.

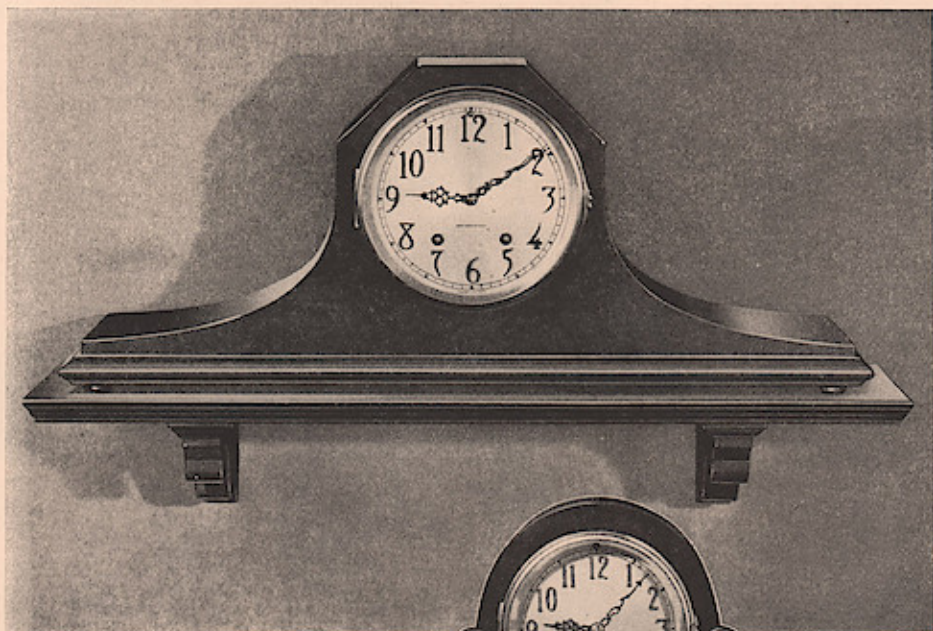
While a more expensive seven jeweled movement has been a part of the Seth Thomas line for years, such a movement as the No. 125 was required to fill the need of a reasonably priced, thoroughly successful lever striking type. The use of a four jeweled compensated balance overcomes friction and resulting wear without adding too greatly to costs.

To the clock user the greatest advantage of the lever clock is that it need not

be placed in an exactly level position, that vibration does not affect its time-keeping, that the clock may be moved from one position to another without causing it to stop. The lever clock is therefore the most desirable type for library tables, bookcases or for other positions from which it is to be occasionally moved.

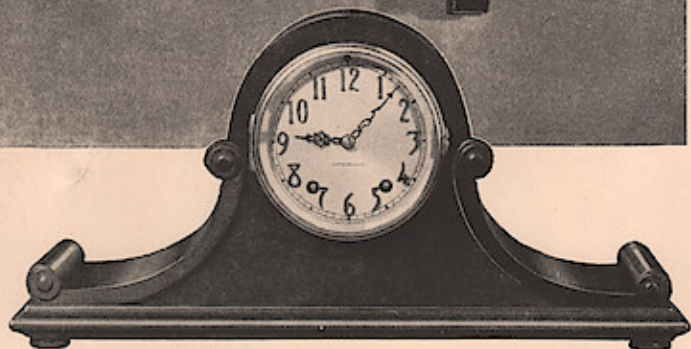
This group of clocks is equipped with the patented Seth Thomas bell metal gong, the tone of which is unequalled in timbre and resonance. Cases are made in a variety of sizes and designs that fit harmoniously into many different interiors.

Lever Strike Clocks



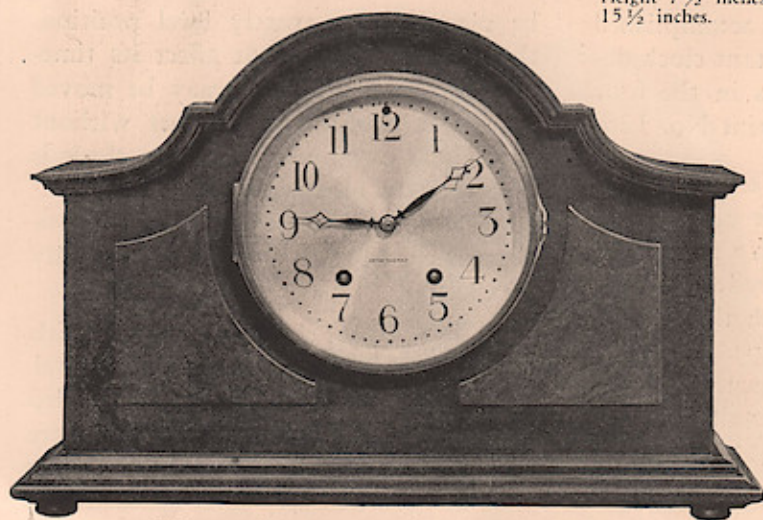
LEXINGTON

Mahogany case. Raised bronze numerals on 5 inch silver dial. Eight day lever movement No. 125, striking hour and half hour on Bell Metal Gong. Height 8 inches. Base 20 inches.



LYNN

Mahogany case. Raised bronze numerals on 4 inch silver dial. Eight-day lever movement No. 125, striking hour and half hour on Bell Metal Gong. Height 7 1/2 inches. Base 15 1/2 inches.



LOWELL

Mahogany case with burl mahogany panels. 5 inch silver dial. Also with raised bronze numerals. Eight day lever movement No. 125, striking hour and half hour on Bell Metal Gong. Height 9 1/4 inches. Base 13 3/4 inches.

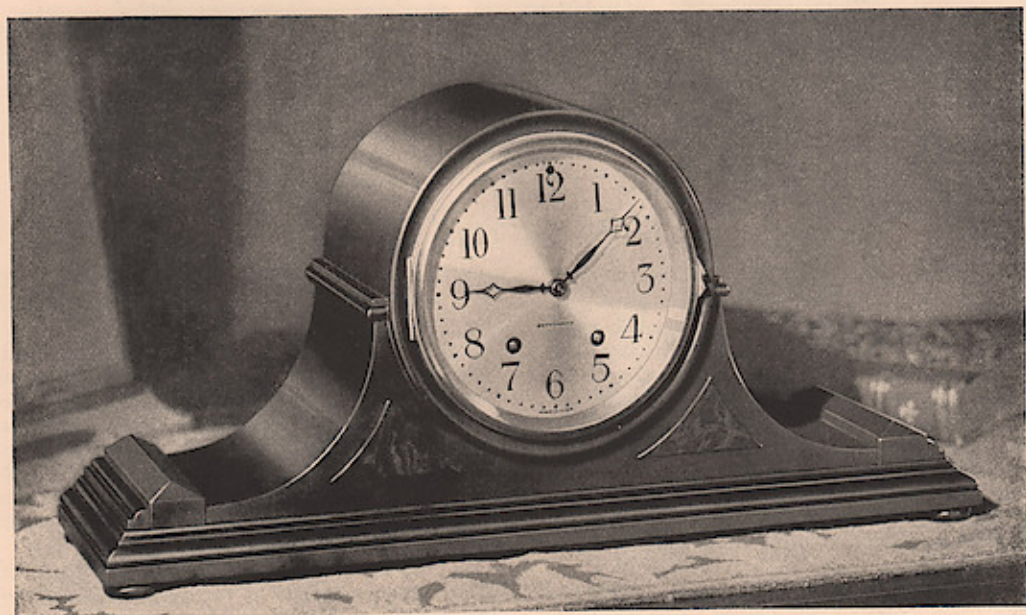
The use of burl panels and the breadth of line of this new clock fit it for use with furniture of William and Mary or Queen Anne design.

Lever Strike Clocks



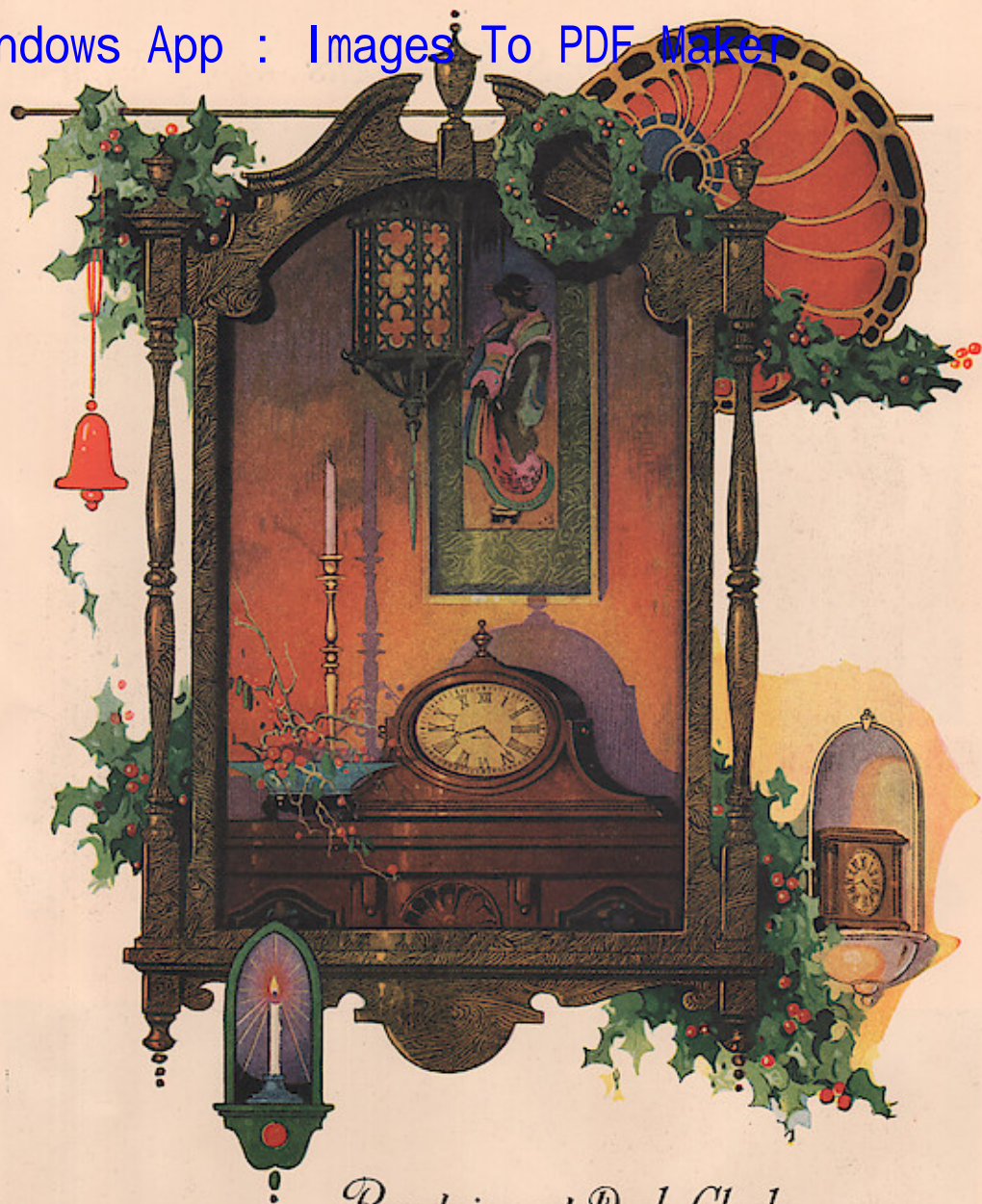
LAWRENCE

Mahogany case. 4 inch silver dial. Eight day lever movement No. 125, striking hour and half hour on Bell Metal Gong. Height $7\frac{3}{4}$ inches. Base $7\frac{1}{2}$ inches. The delicate readings and classical motif relate it to the wonderful cabinet work of Duncan Phyfe, which influences so much of the fine mahogany furniture made today.



LAFAYETTE

Mahogany case with burl mahogany panels. 5 inch silver dial. Also with raised bronze numerals. Eight day lever movement No. 125, striking hour and half hour on Bell Metal Gong. Height $8\frac{1}{4}$ inches. Base $17\frac{1}{4}$ inches.



Boudoir and Desk Clocks

THE groups of clocks illustrated on the following pages include some of the most exquisite contributions to clock designing ever presented by Seth Thomas. While they are referred to as boudoir and desk clocks their beauty has won for them many other locations in the well appointed home or attractive office. In fact, they bring a touch of life and animation wherever they are placed.

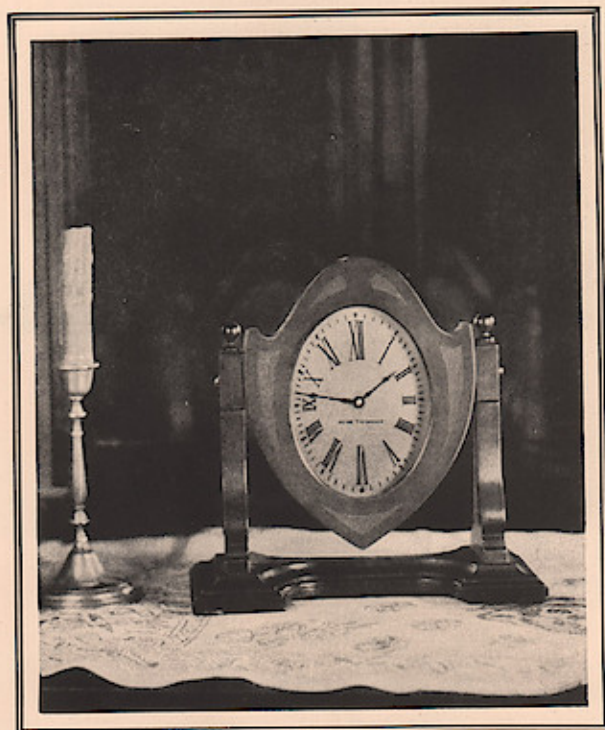
In many of the patterns gold dials have been combined with swinging frames in the popular two-tone wood effect. Others of more simple design have been fashioned in miniature after larger tambour and mantel clocks. Newest among these are the Dale, Deane and Dartmore clocks fitted with particularly attractive three inch silver dials.

In the 8-day clocks there are two types of

movements—No. 112 fine 7-jewel movement in the Eden, Enfield and Ensign clocks—and the No. 103A 4-jewel movement with which all of the other eight-day patterns are fitted. The No. 112 is the highest grade Seth Thomas movement of its type. Both balance and escapement are fully jeweled, assuring the greatest degree of accuracy. The No. 103A incorporates recent important improvements. The balance runs on four jewels thus reducing friction and wear in what might be called the heart of the lever movement.

In one-day clocks will be found the gold dial Petite group so popular for graduation gifts—and other small unobtrusive clocks which supply efficient time without requiring the space needed for larger clocks with eight-day movements.

Swinging Frame Boudoir and Desk Clocks



BOUDOIR No. 2

Swinging frame of two tone mahogany. 5 inch etched gold dial. Height 9 1/2 inches. Base 9 1/2 inches.



BOUDOIR No. 1

Swinging frame of two tone mahogany. 4 inch etched gold dial. Height 7 1/2 inches. Base 7 3/4 inches.



BOUDOIR No. 4

Swinging frame of two tone mahogany. 5 inch etched gold dial. Height 8 1/2 inches. Base 9 1/4 inches. Also fitted with silver dial.



BOUDOIR No. 5

Swinging frame of American Walnut. 4 inch etched gold dial. Height 8 1/2 inches. Base 7 5/8 inches.

*Gold Dial
Boudoir and Desk
Clocks*

FITTED with 4-jeweled
8-day lever time move-
ment No. 103A.



REGENT

Mahogany case. Height 8 $\frac{1}{4}$ inches.
Base 13 $\frac{3}{4}$ inches. 5 inch etched
gold dial.



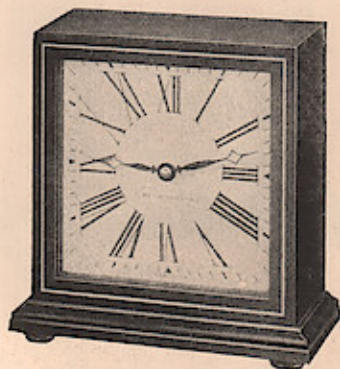
EARL

5 inch etched gold dial. Height
7 $\frac{3}{4}$ inches. Base 7 $\frac{1}{4}$ inches. The
classic traditions of Adam or the
Empire characterize this case of
American Walnut.



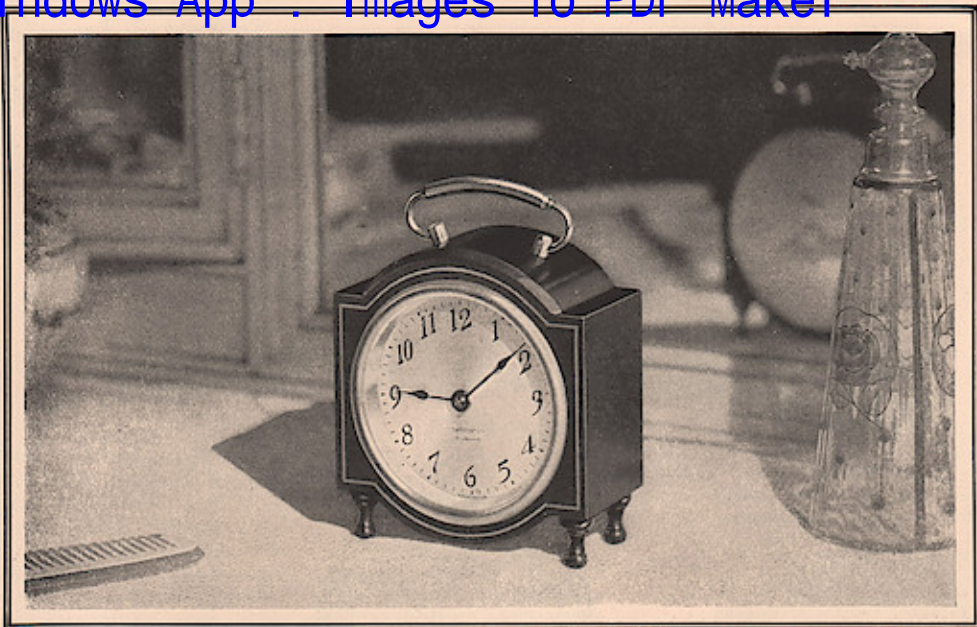
MARQUIS

Mahogany case. 5 inch etched gold
dial. Height 9 $\frac{1}{2}$ inches. Base 10 $\frac{1}{4}$
inches.



VERNON

Mahogany case with inlaid wood
effect. 4 inch etched gold dial. 5 $\frac{1}{2}$
inches square.



DALE

Mahogany inlaid case. 4 jeweled eight day lever time movement No. 103A. 3 inch silver dial. Height 4 1/2 inches. Base 4 1/2 inches. Like many of the finest Georgian and French clocks, this mahogany inlaid case bears a gold finish handle.



DARTMORE

Mahogany case with burl panels. 4 jeweled eight day lever time movement No. 103A. 3 inch silver dial. Height 5 3/4 inches. Base 11 3/4 inches.

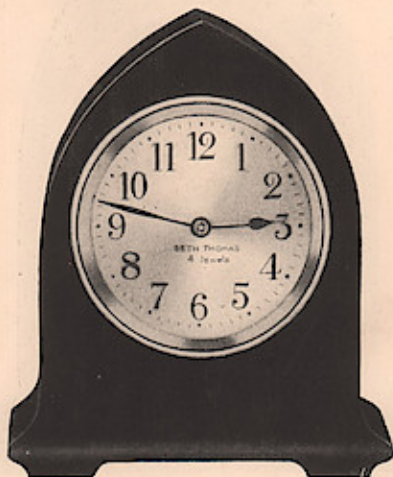


DEANE

Mahogany case. 4 jeweled eight day lever time movement No. 103A. 3 inch silver dial. Height 5 inches. Base 9 inches.

CAPEL

Mahogany case. 4 jeweled eight day lever time movement No. 103A. 2 1/2 inch silver dial. Also with radium hands and numerals on porcelain dial. Height 4 1/2 inches.

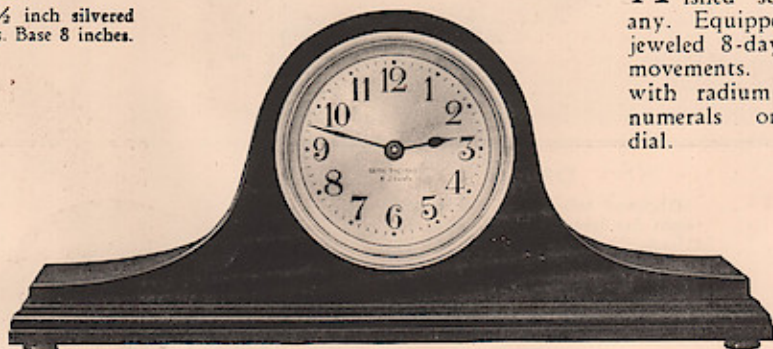


*Four Jeweled
Boudoir and Desk
Clocks*



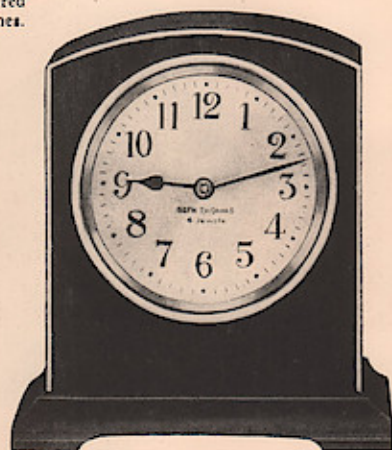
COMAX

Mahogany case. 2½ inch silvered dial. Height 4 inches. Base 8 inches.



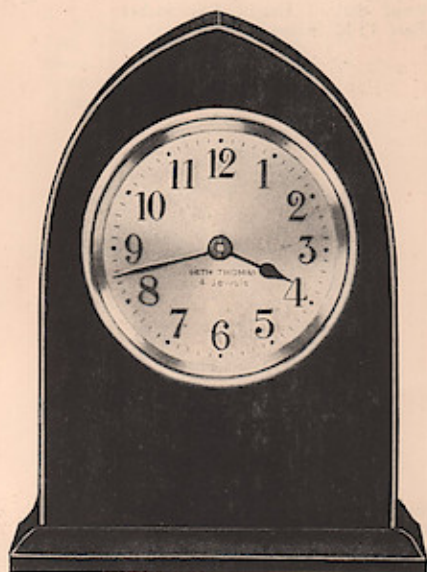
CAMDEN

Mahogany case. 2½ inch silvered dial. Height 4 inches. Base 9 inches.



CANNOCK

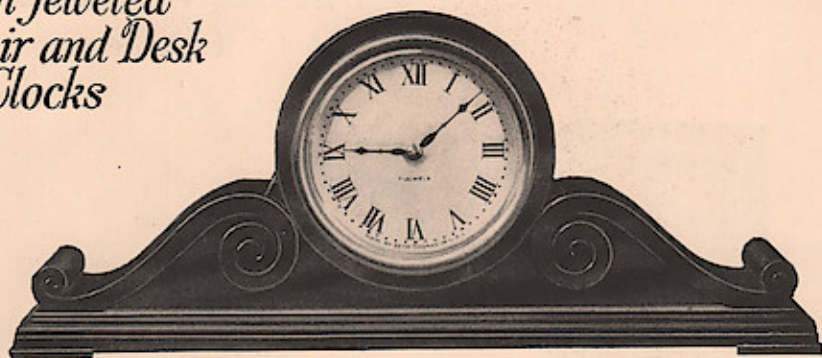
Mahogany inlaid case. 2½ inch silvered dial. Height 4½ inches. Mahogany case with the feminine grace of inlaid Sheraton makes this an ideal choice for the colorful boudoir.



COMO

Mahogany inlaid case. 2½ inch silvered dial. Height 5½ inches. The flowing lines of some of the early English clocks are reproduced in this mahogany-inlaid case.

*Seven Jeweled
Boudoir and Desk
Clocks*



ENFIELD

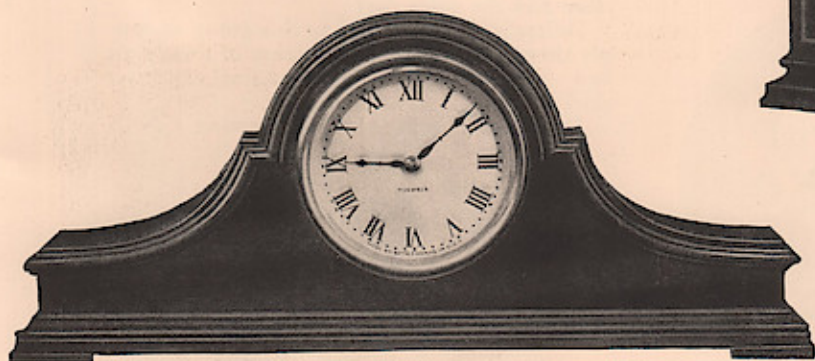
Mahogany case. 3 inch silver dial. Fine eight day, 7-jeweled No. 112 movement. Height 5 1/4 inches. Base 12 1/4 inches.

THE Eden, Enfield and Ensign clocks are fitted with the highest grade movement of its type. Balance and escapement are fully jeweled assuring very close accuracy. From a timekeeping standpoint, these three models represent the finest among Seth Thomas desk and boudoir clocks.



EDEN

Mahogany inlaid case. Fine eight day, 7-jeweled No. 112 movement. 3 inch silver dial. Height 5 1/4 inches. Base 5 inches.



ENSIGN

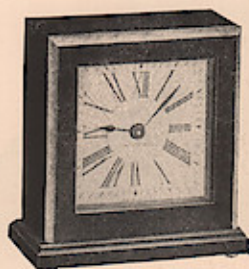
Mahogany case. Fine eight day, 7-jeweled No. 112 movement. 3 inch silver dial. Height 5 inches. Base 12 1/4 inches. Mahogany case finished with richly rubbed mouldings of Queen Anne or Chippendale inspiration.

One Day Clock

BREWSTER

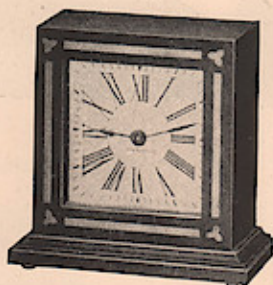
Mahogany case. Height 4 inches. Base 8 1/2 inches. 2 inch porcelain dial. Equipped with one day lever time movement No. 102. Also available with radium dial and hands.





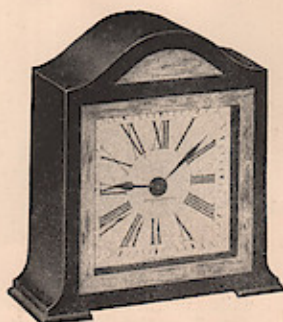
PETITE No. 1

Height 4 inches. Base $3\frac{3}{4}$ inches. Two-tone mahogany case. $2\frac{1}{2}$ inch gold dial. One day time movement No. 102.



PETITE No. 2

Height 4 inches. Base $4\frac{1}{4}$ inches. Two-tone mahogany case. $2\frac{1}{2}$ inch gold dial. One day time movement No. 102.



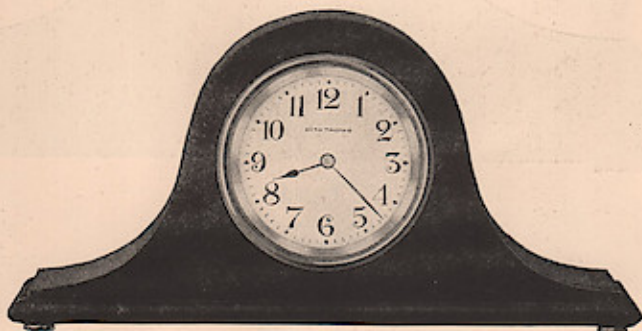
PETITE No. 3

Height $4\frac{3}{8}$ inches. Base $4\frac{3}{8}$ inches. Two-tone mahogany case. $2\frac{1}{2}$ inch gold dial. One day time movement No. 102.

WITHOUT doubt, the combined beauty of the gold dial and two-tone wood has created a new interest in clocks for the dressing table and the office desk.

Petites have been added to this group to supply those who insist on the beauty of these dials and cases but desire smaller, less expensive clocks.

Particularly suited for Graduation Gifts.



BARNARD

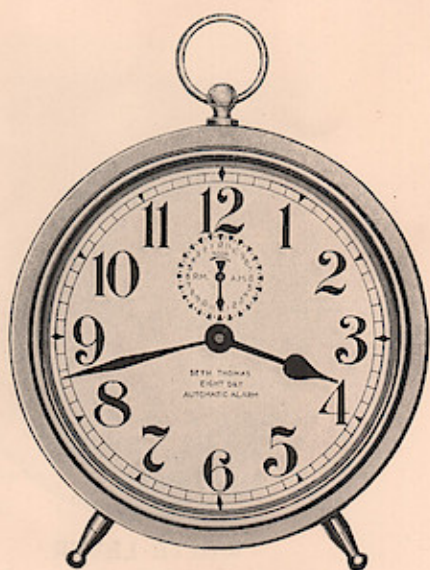
Height $3\frac{1}{4}$ inches. Base $6\frac{1}{2}$ inches. 2 inch porcelain dial. Also available with radium dial and hands.



BAYNE

Height $3\frac{1}{2}$ inches. Base $3\frac{3}{4}$ inches. 2 inch porcelain dial. Also available with radium dial and hands.

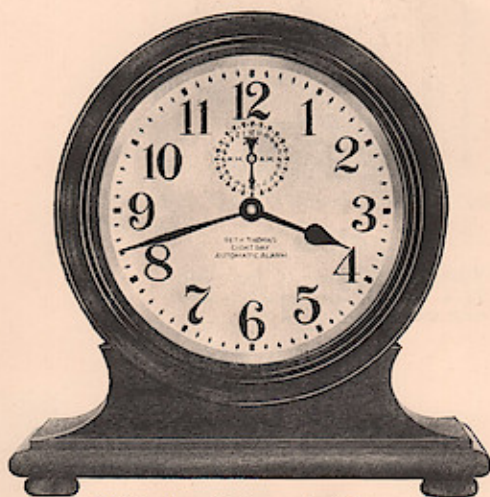
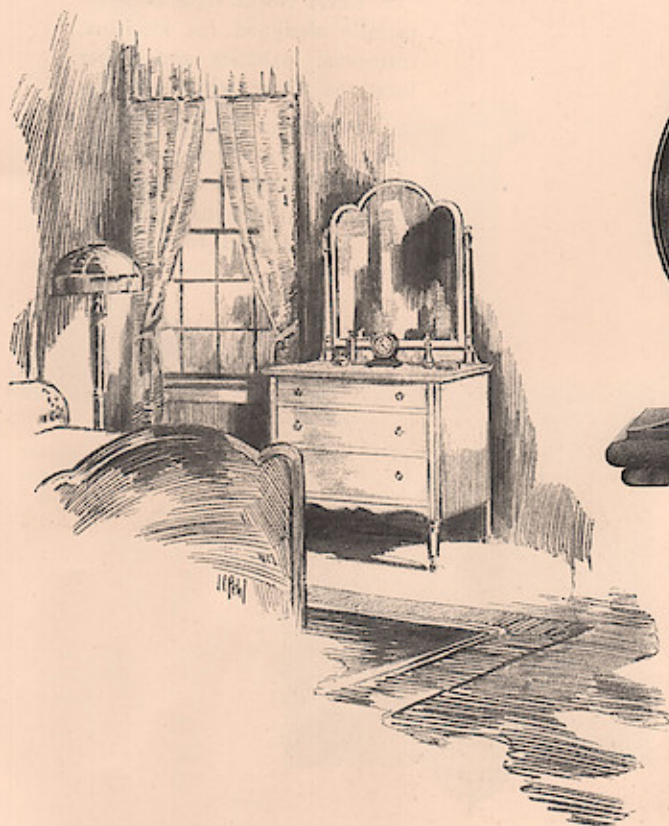
Automatic Alarm Clocks



Eight-day Automatic Alarm

Nickel-plated case. 4 inch dial with large bell on back. Height 5 1/2 inches.

TIME and alarm require winding but once a week. Alarm rings daily at the time set. Stopped by push button back of case. Automatically rings the next day at the same time without attention, and so on for a week. On side of case is adjustment for length of time for alarm to ring. Provided with push button to stop alarm if desired; also with shut-off switch to discontinue daily ringing of alarm if desired. Can be purchased with luminous radium dial for telling time in the dark.



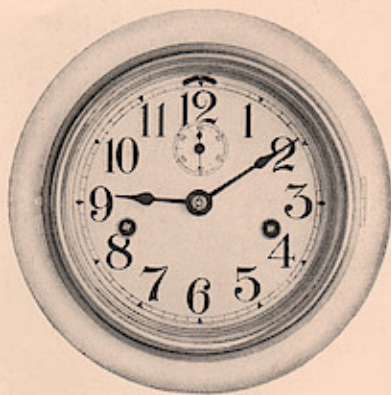
**Eight-day Automatic Alarm
No. 2**

Mahogany case. 4 inch dial. Height 6 3/4 inches. Width 6 1/2 inches.



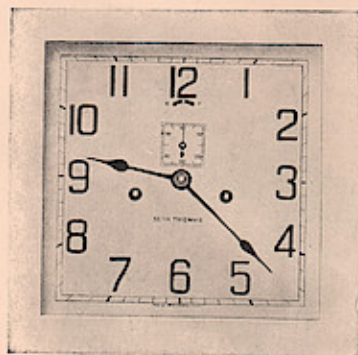
NURSERY

White enamel case with decorated 6 inch dial. Over-all width 9 inches. Equipped with eight day pendulum movement No. 123. Decorations in four colors.



WHITE LEVER

White enamel case. 6 inch dial. Width 8 1/2 inches. Eight day lever time movement No. 10.

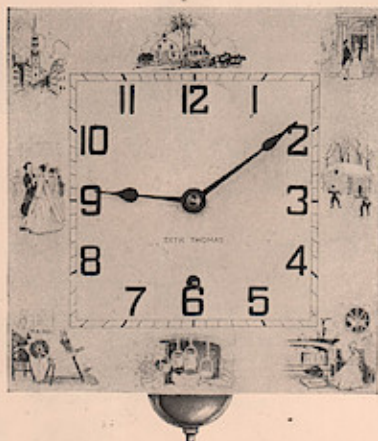


CHEF

White enamel case. 8 inch dial. 11 1/4 inches square. Eight day lever time movement No. 10.

CHEF, Kitchen and White Lever clocks have been especially designed for kitchens, tearooms, pantries and other locations where white prevails.

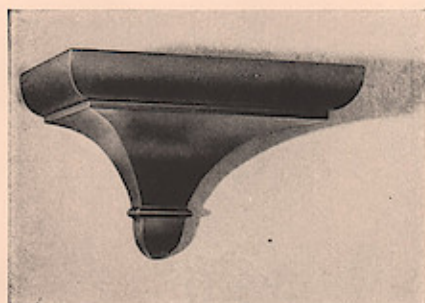
The modern nursery is furnished with the simple gaiety of color and delicate fantasy of decoration. The new nursery clock is suggested to complete such a room.



KITCHEN

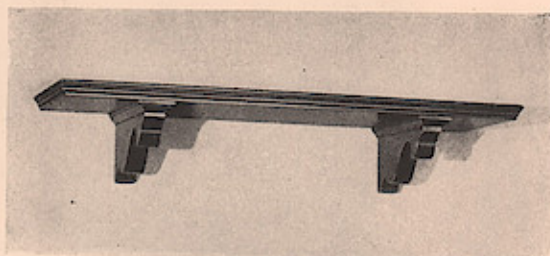
White enamel case with decorated 6 inch dial. Over-all width 9 inches. Equipped with eight day pendulum movement No. 123. Decorations are in a pleasing blue color.

Clock Shelves and Candlesticks



WALL BRACKET

Mahogany. Width $7\frac{1}{4}$ inches.
Depth $6\frac{1}{4}$ inches. May be used
with Abbey, Chateau, Chime 95,
Essex, Severn, Wye and Whitby
clocks.



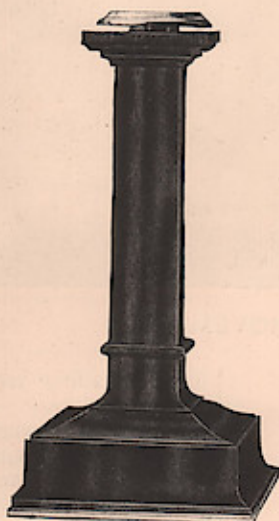
SHELF

Mahogany. Length $21\frac{1}{2}$ inches.
Depth $6\frac{1}{4}$ inches. Suitable for
all 4 and 5 inch dial Tambour
clocks.



No. 3

Mahogany with brass
top and base. Height
 $8\frac{1}{4}$ inches.

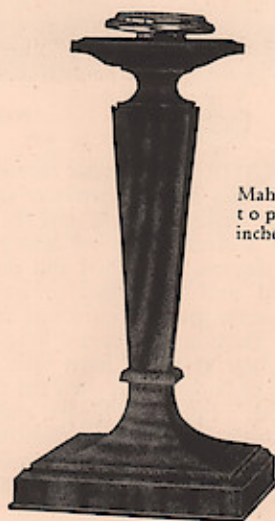


No. 2

Mahogany with brass
top and base. Height
 $8\frac{1}{2}$ inches.

CANDLESTICKS

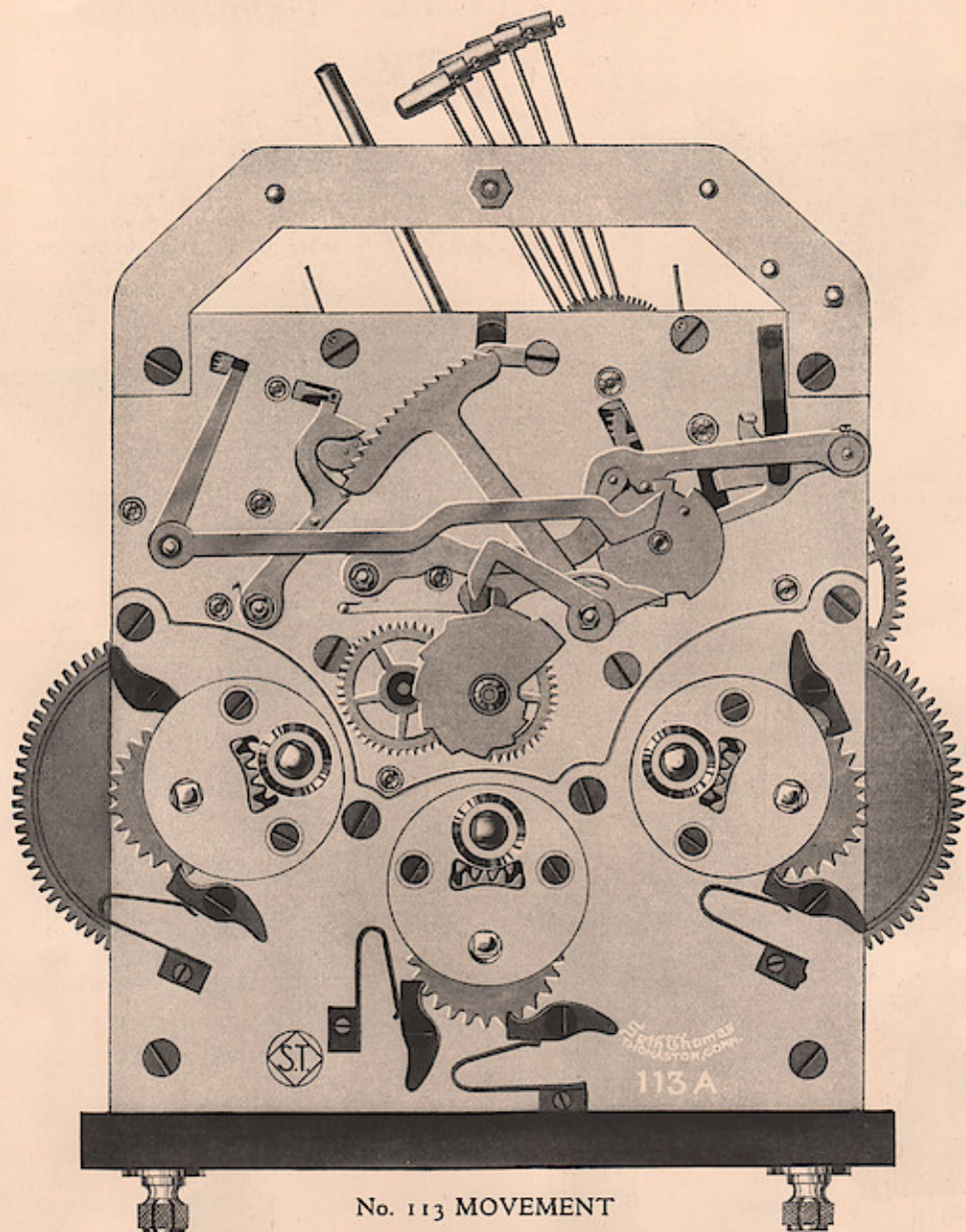
Carefully made by Seth
Thomas craftsmen and much
favored for use with clocks for
which they have been especially
designed.



No. 6

Mahogany with brass
top. Height $8\frac{1}{4}$
inches.

Westminster Chime Movement



No. 113 MOVEMENT

A HIGH-GRADE Westminster chime movement consisting of three separate trains to operate the hour strike, the time and the chime. All wheels are accurately cut of heavy brass, solid cut steel pinions, burnished and polished; pivots hardened and burnished. Heavy cut steel pallets perfectly ground, hardened and polished to reduce friction and insure long life.

The plates made of heavy hard rolled brass. All pivot holes provided with deep cut oil cups for retaining oil. Fly staff pivots and pallet staff are adjustable by moving adjusting buttons set in front plate. Large mainspring barrels which can be easily removed by detaching lower section of front plate without taking movement apart.

Each winding ratchet fitted with double clicks.

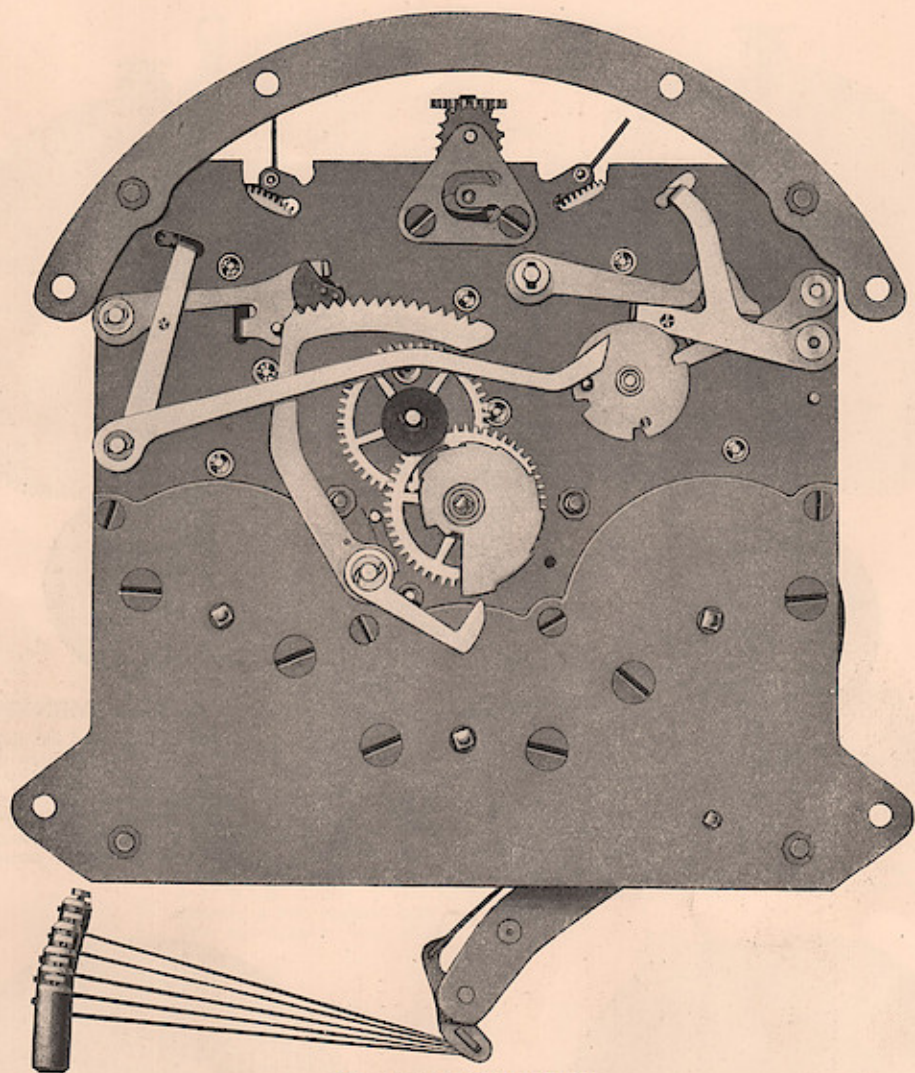
A reliable chime adjustment or self-correcting lever which regulates or corrects the chime and hour strike automatically within the hour. The chimes may be silenced by moving the indicator hand, allowing the hours only to strike.

The movement is rigidly mounted on a seat-board securely fastened to clock case, and may be removed by detaching hands and loosening two thumb screws.

A movement of the finest design and workmanship acquired by our experience for over 100 years in clock manufacturing.

In Chime Nos. 72, 73, 74, 75 and 78.

Westminster Chime Movement



No. 124 MOVEMENT

RELIABLE 8-day Westminster Chime Movement chiming each quarter hour and striking the hours on rods.

This movement has three separate trains to operate the hour strike, time and chime trains.

All wheels are made of hard brass accurately machine cut. All fine lantern pinions except the first pinions and fly pinions which are of solid cut steel.

Solid heavy brass plates dipped and lacquered. Deep countersunk oil cups with retaining rings.

Mainsprings are in boxes attached to the front plate made in two sections. The lower section can be detached to remove mainspring boxes, leaving the rest of the movement intact.

Dead beat escapement, the pallets of solid steel, impulse faces ground and tempered and highly polished.

Should the chimes be disarranged when setting the clock, a self-correcting lever will auto-

matically correct the chimes and hour strike *within the next hour.*

The chimes may be silenced by using the smaller end of the winding key, inserting it in the shut-off arbor. A half turn toward "silent" will shut off the chimes and allow the hours only to strike. The shut-off arbor will be found at the bottom of the dial between numerals "4" and "5."

This movement is fitted with a front bracket and screwed in position.

The chime rods are of a special metal alloy of superior quality and perfectly tuned. The chimes are played on four rods and the fifth rod is used for the hour strike.

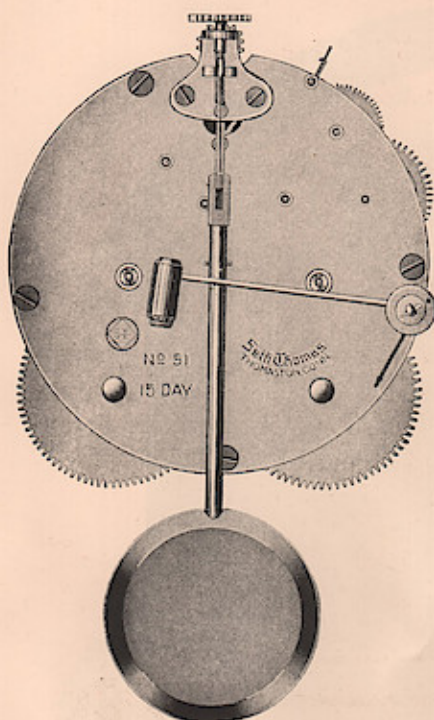
In Chimes Nos. 90, 91, 92, 93, 95 and 96.

SIZE

Length 8 inches; width $6\frac{3}{4}$ inches; depth $5\frac{1}{2}$ inches.

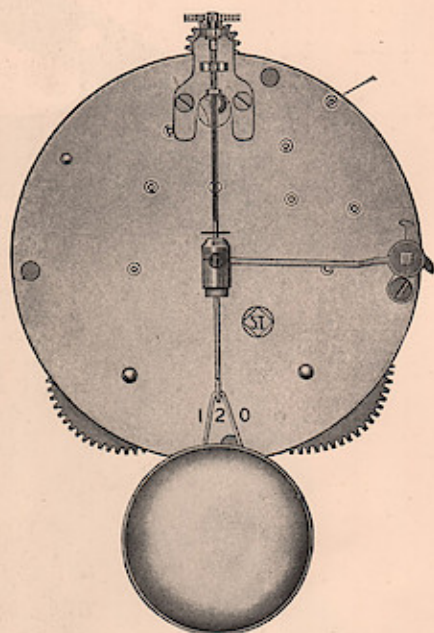
Pendulum from center to end of ball $4\frac{1}{4}$ inches.

Pendulum and Lever Movements



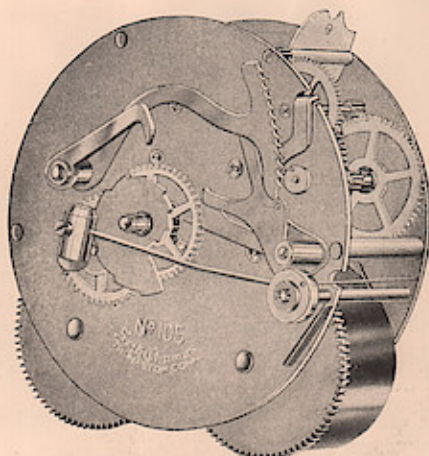
No. 51 MOVEMENT

Highest grade 15-day pendulum strike movement for fine mantel clocks, with heavy hard brass plates and cut wheels. All brass parts gold plated. Mainsprings in going barrels and steel cut polished pinions. Rack striking. Strikes the hour and half hour on Bell Metal Gong.



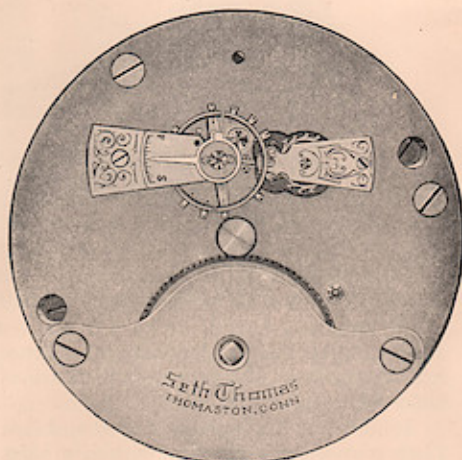
No. 120 MOVEMENT

Eight-day, pendulum, hour and half hour rack strike. Lantern and cut steel pinions throughout. Solid back plate dipped and lacquered. Mainspring in spring boxes attached to front plate made in two sections. The lower section can be detached to remove mainspring boxes leaving the rest of the movement intact.



No. 105 MOVEMENT

Eight day fine lever, hour and half hour strike movement, cut gears and cut steel polished pinions throughout with burnished pivots. Fitted with detachable 7-jewel escapement. Breguet hairspring, bi-metal compensated balance wheel cut for expansion. Heavily gold plated gears fitted into round plates of hard rolled gold plated brass. Can be used in a space $3\frac{3}{4}$ inches in diameter and $3\frac{1}{2}$ inches deep. Very fine timekeeper.

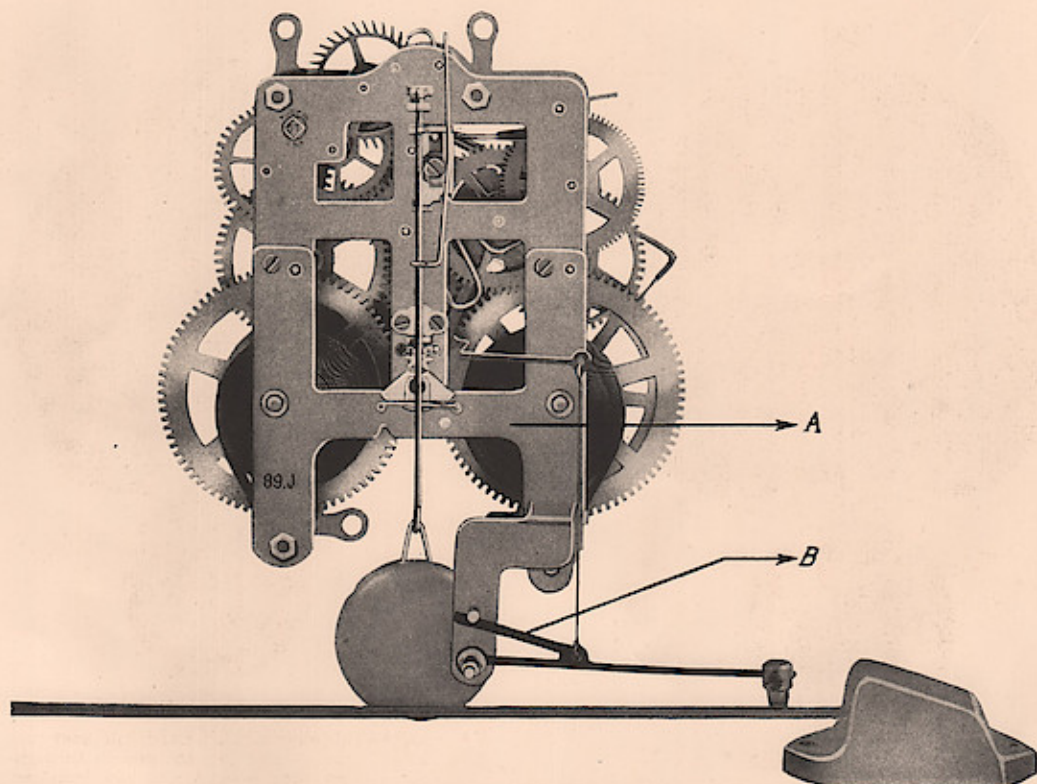


No. 112 MOVEMENT

Eight day fine lever time movement with cut steel pinions throughout and highly burnished pivots. Is fitted with seven jewels, Breguet hairspring and compensated bi-metal balance wheel cut for expansion.

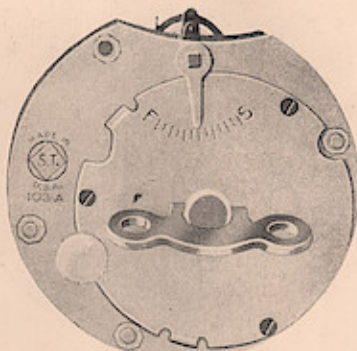
Movement is $2\frac{11}{16}$ inches in diameter; $1\frac{15}{16}$ inches deep. Used in Eden, Enfield, Ensign clocks and Fine Lever Clock No. 3 and No. 4 as illustrated in Catalog No. 776.

Pendulum and Lever Movements



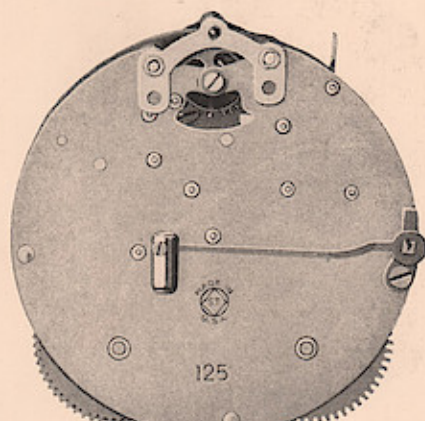
No. 89 MOVEMENT

Eight day pendulum strike movement. Heavy hard brass rectangular plates and cut gears throughout. Lower part of back plate is detachable for easy removal (see A). (B) rebound lever which allows for full amplitude of rod vibrations thus assuring a very mellow tone. This movement is front wind.



No. 103A MOVEMENT

Eight day lever time movement. pin escapement. Balance wheel screws are fitted with bearing and cap jewels. Cut gears and pinions in hard rolled brass plates. Has detachable mainspring box. Back wind and set. Diameter $2 \frac{9}{16}$ inches. Depth $2 \frac{1}{4}$ inches. Very good time-keeper. Used in all eight day Boudoir and Desk Clocks.



No. 125 MOVEMENT

Eight day lever strike movement of the pin escapement type with detachable mainspring barrels. Plates of hard brass, lacquered. Cut wheels throughout and solid cut steel pinions in the time train. Movement fitted with compensated bi-metal balance wheel cut for expansion. Jeweled balance bearings. Rack striking. Most reliable and particularly recommended for clocks which are not to be permanently stationary.

Windows App : Images To PDF Maker

PRINTED IN U.S.A.
BY

Thomson Co.

NEW YORK

Windows App : Images To PDF Maker