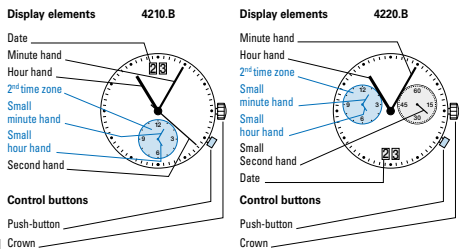


You have decided to buy a watch, which was assembled by a watchmaker using a Ronda movement. Please note that no watches are produced or distributed under the Ronda brand.

In case of repairs, guarantee claims and questions concerning the functioning of a watch, purchasers and consumers should contact their retailer or the watch manufacturer, for which the relevant information can be found in the sales or guarantee documentation provided with the watch.

Description of the display and control buttons



01

Setting the date/time

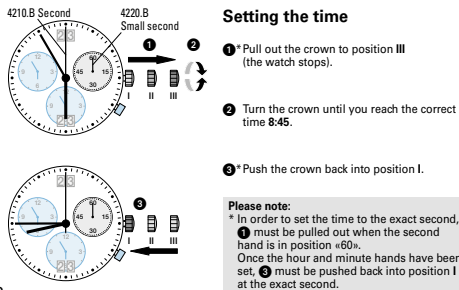
Example:
 - Date / time on the watch: 17 / 1:25 AM
 - Present date / time: 04 / 8:30 PM

- Pull out the crown to position II (the watch continues to run).
- Turn the crown until yesterday's date appears 03.
- * Pull out the crown to position III (the watch stops).
- Turn the crown until the correct date 04 appears.
- ** Continue to turn the crown until the correct time 8:30 PM appears.
- Push the crown back into position I.

Please note:

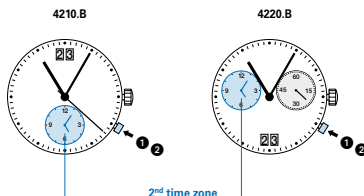
- * To set your watch to the exact second, please refer to the chapter entitled «setting the time».
- ** Please observe the AM/PM clock rhythm.

04



02

Setting the 2nd time zone



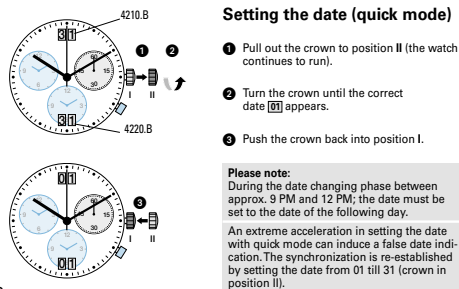
Any 2nd time zone can be set using the small hour hand and small minute hand.

- Activation: Press the push button for at least 2 seconds. As soon as the small minute hand jumps forward one minute, this mode of operation is activated.
- Brief pressing: (less than 1 second) Moves forward individual minutes.
 Medium pressing: (1 to 2 seconds) Moves forward 1 hour.
 Long pressing (longer than 2 seconds) The time zone is moved forward until the push button is released.

Please note:

If the push button is not pushed for ten seconds, the setting mode is deactivated. Please see point no 1 for activation.

05



03



Battery type: 395 / SR927SW
 Accuracy: +20 / -10 seconds per month

