

A woman with long, dark, wavy hair is posing on a beach. She is wearing a pink and teal bikini bottom and a gold and black Invicta chronograph watch on her left wrist. She is looking over her shoulder towards the camera. The background features a sandy beach, blue ocean waves, and a hilly coastline under a clear sky.

INVICTA . 2014

INVICTA

VENOM

The envy of others.



The Invicta Venom Iridescent . Model 15984 . Movement: Professional Swiss Quartz Chronograph . **Case and Dial:** 53.7mm . Solid stainless steel case with iridescent plating . Unidirectional rotating bezel . Stainless steel screw-down crown and pushers . Flame Fusion crystal . Tritnite luminous hands and indexes . Date display . **Band:** High grade Polyurethane strap . Stainless steel buckle . **Water Resistance:** 1000 meters tested

January

2014 Wed Thu Fri Sat Sun Mon Tue Wed Thu Fri Sat Sun Mon Tue Wed Thu Fri Sat Sun Mon Tue Wed Thu Fri

1 2 3 4 5 6 7 8 9 10 11 12 13 14 15 16 17 18 19 20 21 22 23 24 25 26 27 28 29 30 31



INVICTA

BOLT

A NAUTICAL ENSEMBLE

The Invicta Bolt Zeus Sport . Model 14404 . Movement: Professional Swiss Quartz Chronograph . **Case and Dial:** 53mm . Solid stainless steel case . Unidirectional rotating bezel with individually plated stainless steel rope design cables in black IP . Stainless steel screw-down crown and pushers in black IP . Flame Fusion crystal . Tritnite luminous hands and indexes . Date display . **Band:** Solid stainless steel with divers safety clasp . **Water Resistance:** 200 meters tested

February

2014 Sat Sun Mon Tue Wed Thu Fri Sat Sun Mon Tue Wed Thu Fri Sat Sun Mon Tue Wed Thu Fri

1 2 3 4 5 6 7 8 9 10 11 12 13 14 15 16 17 18 19 20 21 22 23 24 25 26 27 28

INVICTA

SUBAQUA
 BEST UNDER PRESSURE



The Invicta Subaqua NOMA V . Model 12881 . Movement: Professional Swiss Quartz Chronograph . **Case and Dial:** 50mm . Solid stainless steel case . Unidirectional rotating bezel with blue IP . Stainless steel screw-down crown and pushers . Flame Fusion crystal . Tritnite luminous hands and indexes . Date display . **Band:** High grade Polyurethane strap . Stainless steel inserts and buckle . **Water Resistance:** 500 meters tested

March	Sat	Sun	Mon	Tue	Wed	Thu	Fri	Sat	Sun	Mon	Tue	Wed	Thu	Fri	Sat	Sun	Mon	Tue	Wed	Thu	Fri	Sat	Sun	Mon							
2014	1	2	3	4	5	6	7	8	9	10	11	12	13	14	15	16	17	18	19	20	21	22	23	24	25	26	27	28	29	30	31



INVICTA

VENOM

The envy of others.

The Invicta Venom Reserve . Model 10830 . Movement: Professional Swiss Quartz Chronograph . **Case and Dial:** 53.7mm . Solid stainless steel case . Unidirectional rotating bezel . Stainless steel screw-down crown and pushers . Flame Fusion crystal . Tritnite luminous hands and indexes . Date display . 18kt rose gold plated . **Band:** High grade Polyurethane strap . Stainless steel buckle . 18kt rose gold plating . **Water Resistance:** 1000 meters tested

April
2014

Tue	Wed	Thu	Fri	Sat	Sun	Mon	Tue	Wed	Thu	Fri	Sat	Sun	Mon	Tue	Wed	Thu	Fri	Sat	Sun	Mon	Tue	Wed							
1	2	3	4	5	6	7	8	9	10	11	12	13	14	15	16	17	18	19	20	21	22	23	24	25	26	27	28	29	30



INVICTA
 PRO DIVER
 MASTER OF THE OCEANS

The Invicta Pro Diver Australian . Model 14644 . Movement: Professional Swiss Quartz Chronograph . **Case and Dial:** 48mm . Solid stainless steel case . Unidirectional rotating bezel . Stainless steel screw-down crown and pushers . Mineral crystal . Tritnite luminous hands and indexes . Sunray dial . Exhibition caseback . Date display . **Band:** solid stainless band with divers safety clasp . **Water Resistance:** 300 meters tested

May	Thu	Fri	Sat	Sun	Mon	Tue	Wed	Thu	Fri	Sat	Sun	Mon	Tue	Wed	Thu	Fri	Sat	Sun	Mon	Tue	Wed	Thu	Fri	Sat							
2014	1	2	3	4	5	6	7	8	9	10	11	12	13	14	15	16	17	18	19	20	21	22	23	24	25	26	27	28	29	30	31




INVICTA
 ИМФ СССР
RUSSIAN
 SINCE 1959 **DIVER**
 BETWEEN THE DEVIL AND THE DEEP BLUE SEA
COME HELL OR HIGH WATER

The Invicta Russian Diver Nautilus . Model 14625 . Movement: Hand built Mechanical Swiss made 17 Jewel skeleton movement . **Case and Dial:** 50mm . Solid stainless steel case . Stainless steel push/pull crown with oversized crown protector . Patent dual release hatch dial and case back cover . Flame Fusion crystal . Skeleton dial . 18kt gold plating . Black IP gun metal plating . Stainless steel screw-down crown and pushers . Flame Fusion crystal . Tritnite luminous hands and indexes . Exhibition caseback . **Band:** Genuine leather . **Water Resistance:** 1000 meters tested

June	Sun	Mon	Tue	Wed	Thu	Fri	Sat	Sun	Mon	Tue	Wed	Thu	Fri	Sat	Sun	Mon	Tue	Wed	Thu	Fri	Sat	Sun	Mon							
2014	1	2	3	4	5	6	7	8	9	10	11	12	13	14	15	16	17	18	19	20	21	22	23	24	25	26	27	28	29	30



GOING THE DISTANCE

The Invicta S1 Rally . Model 13061 . Movement: Professional Quartz Chronograph . Case and Dial: 52 mm . Solid stainless steel case . Screw-down crown and pushers . Mineral crystal . Tritnite luminous hands and indexes . Date display . Band: Polyurethane rubber . Solid stainless steel buckle . Water Resistance: 200 meters tested

July
2014

Tue	Wed	Thu	Fri	Sat	Sun	Mon	Tue	Wed	Thu	Fri	Sat	Sun	Mon	Tue	Wed	Thu	Fri	Sat	Sun	Mon	Tue	Wed	Thu							
1	2	3	4	5	6	7	8	9	10	11	12	13	14	15	16	17	18	19	20	21	22	23	24	25	26	27	28	29	30	31



INVICTA
RESERVE

FOR THE FEW WHO KNOW BEST

The Invicta Reserve Retrograde . Model 12484 . Movement: Professional Quartz Chronograph . **Case and Dial:** 52 mm . Solid stainless steel case . Solid stainless steel unidirectional rotating bezel . 18kt gold plating . Stainless steel screw-down crown . Flame Fusion crystal . Tritnite luminous hands and indexes . Date and Day display . **Band:** Genuine leather strap with stainless steel buckle .

Water Resistance: 500 meters tested

August
2014

Fri	Sat	Sun	Mon	Tue	Wed	Thu	Fri	Sat	Sun	Mon	Tue	Wed	Thu	Fri	Sat	Sun	Mon	Tue	Wed	Thu	Fri	Sat	Sun									
		1	2	3	4	5	6	7	8	9	10	11	12	13	14	15	16	17	18	19	20	21	22	23	24	25	26	27	28	29	30	31



INVICTA
AKULA

RESERVE
 FOR THE FEW WHO KNOW BEST

The Invicta Akula Reserve . Model 14519 . Movement: Professional Swiss Quartz Chronograph . **Case and Dial:** 52mm . Solid stainless steel case with 18kt gold plating . Fixed bezel . Push/pull crown and push-down pushers . Flame Fusion crystal . Tritnite luminous hand and indexes . Date display . **Band:** Solid stainless 18kt gold plating with divers safety clasp . **Water Resistance:** 100 meters tested

September	Mon	Tue	Wed	Thu	Fri	Sat	Sun	Mon	Tue	Wed	Thu	Fri	Sat	Sun	Mon	Tue	Wed	Thu	Fri	Sat	Sun	Mon	Tue							
2014	1	2	3	4	5	6	7	8	9	10	11	12	13	14	15	16	17	18	19	20	21	22	23	24	25	26	27	28	29	30



INVICTA

BOLT

A NAUTICAL ENSEMBLE

The Invicta Bolt Zeus . Model 14061 . Movement: Professional Swiss Quartz Chronograph . **Case and Dial:** 53mm . Solid stainless steel case . Unidirectional rotating bezel with individually plated stainless steel rope design cables in orange IP . Stainless steel screw-down crown and pushers in black IP . Flame Fusion crystal . Tritnite luminous hands and indexes . Date display . **Band:** Solid stainless steel with design steel cable inserts in Orange IP . Stainless steel diver buckle . Black IP . **Water Resistance:** 200 meters tested

October
2014

Wed	Thu	Fri	Sat	Sun	Mon	Tue	Wed	Thu	Fri	Sat	Sun	Mon	Tue	Wed	Thu	Fri	Sat	Sun	Mon	Tue	Wed	Thu	Fri							
1	2	3	4	5	6	7	8	9	10	11	12	13	14	15	16	17	18	19	20	21	22	23	24	25	26	27	28	29	30	31



INVICTA
 PRO DIVER
 MASTER OF THE OCEANS

The Invicta Pro Diver Chrono . Model 14975 . Movement: Professional Swiss Quartz Chronograph . **Case and Dial:** 50mm . Solid stainless steel case . Unidirectional rotating bezel . Stainless steel crown and pushers . Mineral crystal . Tritnite luminous hands and indexes . Antiqued silver tone sunray dial . 18kt gold plating . **Band:** High grade silicone strap . Stainless steel buckle . **Water Resistance:** 100 meters tested

November

2014 Sat Sun Mon Tue Wed Thu Fri Sat Sun Mon Tue Wed Thu Fri Sat Sun Mon Tue Wed Thu Fri Sat Sun

1 2 3 4 5 6 7 8 9 10 11 12 13 14 15 16 17 18 19 20 21 22 23 24 25 26 27 28 29 30



INVICTA
 PRO DIVER
 MASTER OF THE OCEANS

The Invicta Pro Diver Sport . Model 14661 . Movement: Professional Swiss Quartz . **Case and Dial:** 52mm . Solid stainless steel case . Unidirectional rotating bezel . Stainless steel crown and pushers . Flame Fusion crystal . Metal dial . Tritnite luminous hands and indexes . **Band:** High grade polyurethane strap . Stainless steel buckle . **Water Resistance:** 200 meters tested

December	Mon	Tue	Wed	Thu	Fri	Sat	Sun	Mon	Tue	Wed	Thu	Fri	Sat	Sun	Mon	Tue	Wed	Thu	Fri	Sat	Sun	Mon	Tue	Wed							
2014	1	2	3	4	5	6	7	8	9	10	11	12	13	14	15	16	17	18	19	20	21	22	23	24	25	26	27	28	29	30	31



Melissa, wearing the men's Invicta Venom Iridescent.
Model 15984



Brianna, wearing the men's Invicta Bolt Zeus Sport.
Model 14404



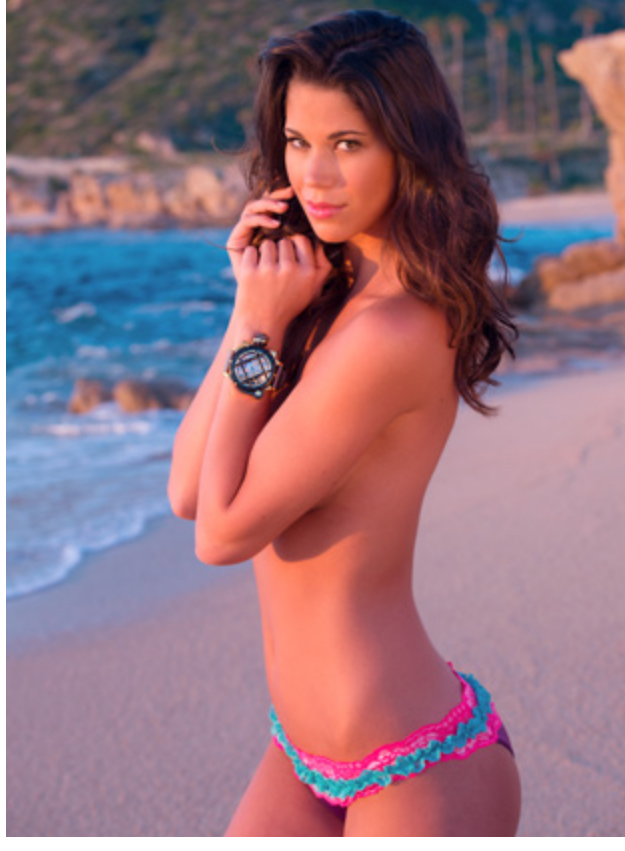
Melissa, wearing the men's Invicta Subaqua NOMA V.
Model 12881



Daniela, wearing the men's Invicta Venom Reserve.
Model 10830



Mel, wearing the men's Invicta Pro Diver Australian.
Model 14644



Melissa, wearing the men's Invicta Russian Diver Nautilus.
Model 14625



Brianna, wearing the men's Invicta S1 Rally.
Model 13061



Daniela, wearing the men's Invicta Reserve Retrograde.
Model 12484



Melissa, wearing the men's Invicta Akula.
Model 14519



Brianna, wearing the men's Invicta Bolt Zeus.
Model 14061



Melissa, wearing the men's Invicta Pro Diver Chrono.
Model 14975



Mel, wearing the Invicta Pro Diver Sport.
Model 14661



The Invicta Venom Iridescent
Model 15984



The Invicta Bolt Zeus Sport
Model 14404



The Invicta Subaqua NOMA V
Model 12881



The Invicta Venom Reserve
Model 10830



The Invicta Pro Diver Australian
Model 14644



The Invicta Russian Diver Nautilus
Model 14625



The Invicta S1 Rally
Model 13061



The Invicta Reserve Retrograde
Model 12484



The Invicta Akula Reserve
Model 14519



The Invicta Bolt Zeus
Model 14061



The Invicta Pro Diver Chrono
Model 14975



The Invicta Pro Diver Sport
Model 14661